

RECP-BATH, GFI  
84100-01-CHT  
BOX  
8288-01-000  
COVER  
84099-01-CHT  
WIRE  
50235-01-000  
(150)  
CONNECTOR  
8328-01-000

CONTROL CENTER  
SEE SHEET #3  
SCREW  
G11-10-12U (4)

SPLICE  
90971-01-000  
90971-02-000

PANEL-POWERCORD  
94375-01-CHT (LH)  
94375-02-CHT (RH)  
SCREW  
G32-10-10B (8)  
CLAMP  
10497-01-000 (5)  
RIVET  
H16-06-04R (5) (5)  
SCREW  
G11-08-08B (22)

POWER CORD ASM (W)

BRACKET-POWERCORD  
92985-01-000  
SCREW  
G11-12-12U (3)

RECP-DINETTE  
86738-01-CHT

RECP-REFRIG  
58707-01-000

RECP-BEDROOM  
86738-01-CHT

BOX  
8289-01-000  
RECP  
24924-02-000  
WIRE  
50235-01-000 (2)  
TERMINAL  
8329-01-000  
SCREW  
G11-10-10B (2)  
SCREW  
G25-10-06B  
COVER  
69238-01-000  
CONNECTOR  
8314-01-000

SUPPORT  
94551-01-000

BOX  
8289-01-000  
COVER  
8294-01-000  
CONNECTOR  
8314-01-000 (3)  
WIRE  
50235-01-000  
(150)  
TERMINAL  
8328-01-000  
SCREW  
G11-10-10B (2)  
SCREW  
G32-10-06B

CONNECTOR  
8356-01-000 (2)

POWER CORD  
8054-02-000  
CONNECTOR  
8355-01-000

WIRE  
8022-01-000  
(4300)  
TO GEN BOX  
CONDUIT  
41953-01-000  
(4300)

VIEW A-A  
SCALE: 0.3

POWER CORD ASM (I)  
TO CONTROL CENTER  
TO GENERATOR

NOTE: POWER CORD BOX  
WIRE ROUTING FOR  
ITASCA

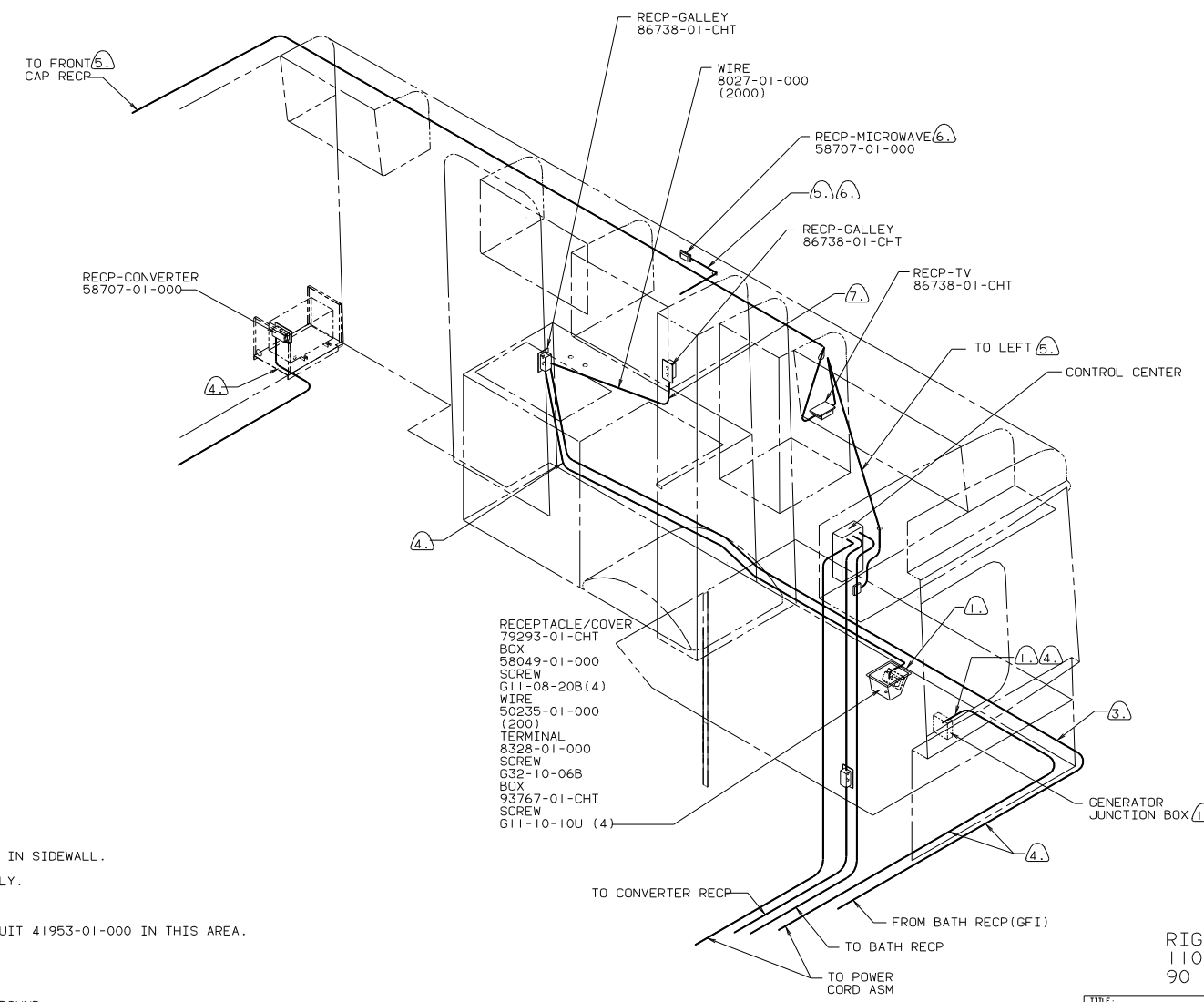
LEFT SIDE  
110V (US)

- ⑭ WIRES GO THRU SLOT IN BACKWALL.
- ⑬ USE WITH MICROWAVE ONLY.
- ⑫ WIRE IN ROOF.
- ⑪ WIRE IN SIDEWALL.
- ⑩ USE WITHOUT ROOF AIR CONDITIONER.
- ⑨ COVER WIRES WITH CONDUIT 41953-01-000 IN THIS AREA.
- ⑧ LOCATE TOP OF RECP 350 ABOVE SHELF.
- ⑦ WIRE ROUTED IN FLOOR.
- ⑥ INSTALL RECEPTACLE WITH GROUND TOWARD FLOOR OF VEHICLE.
- ⑤ SEAL WITH BEDDING COMPOUND 69639-01-000.
- ④ USE WITH GENERATOR.

3. ALL GROUND WIRES TO BE COVERED WITH TUBING 8041-02-000.
2. ALL 110V WIRES ARE TO BE CLAMPED WITH CLAMP 10497-05-000 WITHIN 200 OF OUTLET BOXES. USE SCREW G67-10-12B.
1. ALL WIRE TO BE CLAMPED WITH CLAMP 10495-01-000 OR CLIP 80734-01-000 EVERY 700. USE SCREW G67-10-12B.

NOTES:

WINNEBAGO		90 W/ICN25RC	
OF TR	UNSPECIFIED TOLERANCES ARE:	MATERIAL:	
CHDR	WHOLE DIM (X, Y, Z)	+	
P E	ONE-PLACE (X, Y, Z)	+	
H E	TWO-PLACE (X, Y, Z)	+	
AN E	ANGLE	+	
DSCR	THIRD ANGLE PROJECTION	+	
LAYOUT NO.	N25RC0	TITLE:	WIRING INSTL-BODY
DIA #	SCALE: .1	DO NOT SCALE DRAWING	SHEET NO. 97452
ALL DIMENSIONS ARE IN MILLIMETERS			



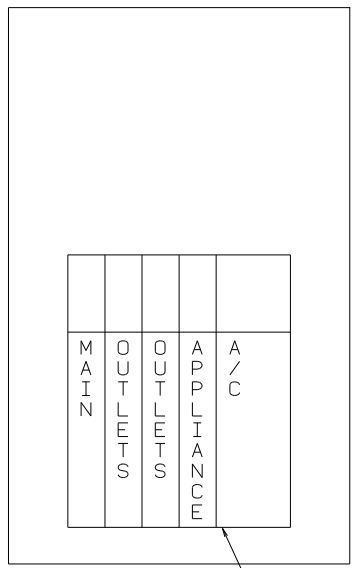
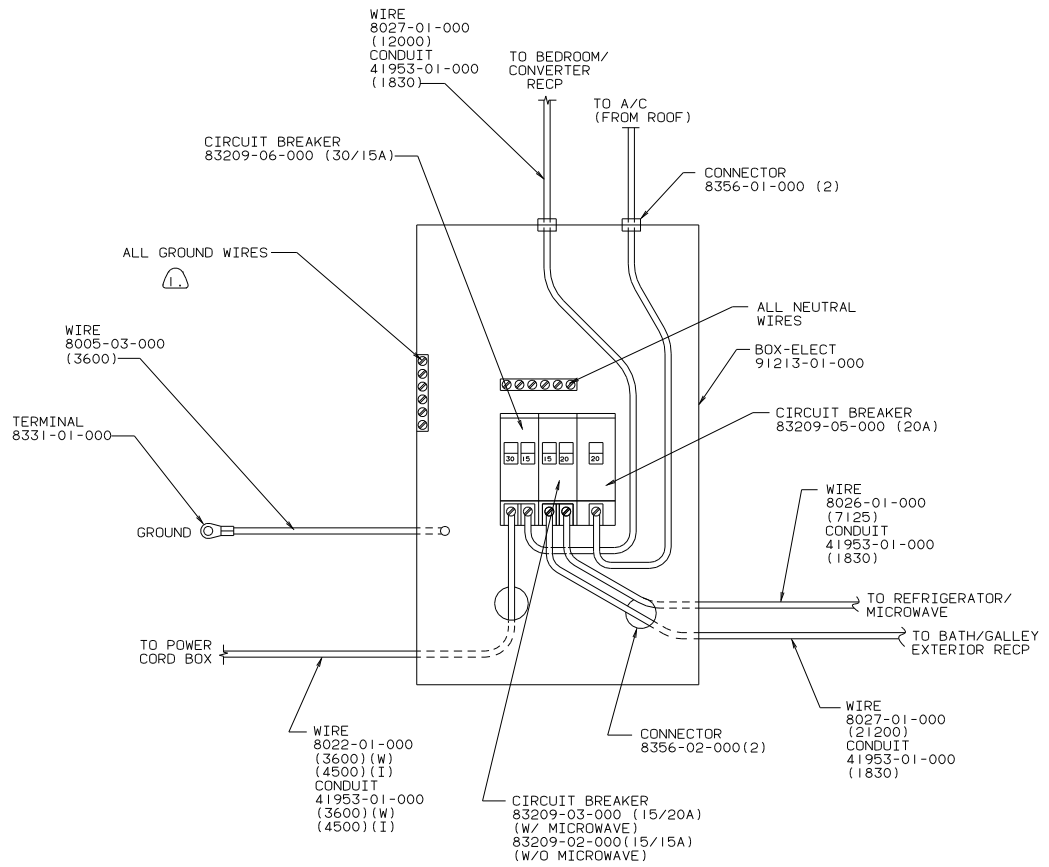
- RECEPTACLE/COVER 79293-01-CHT
- BOX 58049-01-000
- SCREW G11-08-20B (4)
- WIRE 50235-01-000 (200)
- TERMINAL 8328-01-000
- SCREW G32-10-06B
- BOX 93767-01-CHT
- SCREW G11-10-10U (4)

- ⑦ ROUTE THROUGH CONDUIT IN SIDEWALL.
- ⑥ USE WITH MICROWAVE ONLY.
- ⑤ WIRE IN ROOF.
- ④ COVER WIRES WITH CONDUIT 41953-01-000 IN THIS AREA.
- ③ WIRE ROUTED IN FLOOR.
- ② WIRE IN SIDEWALL.
- ① SEAL WITH BEDDING COMPOUND

NOTES:

RIGHT SIDE  
110V (US)  
90 W/ICN25RC

TITLE:		WIRING INSTL-BODY	
DO NOT SCALE DRAWING	SIZE	DWG NO	97452
SHEET 2	OF 12		

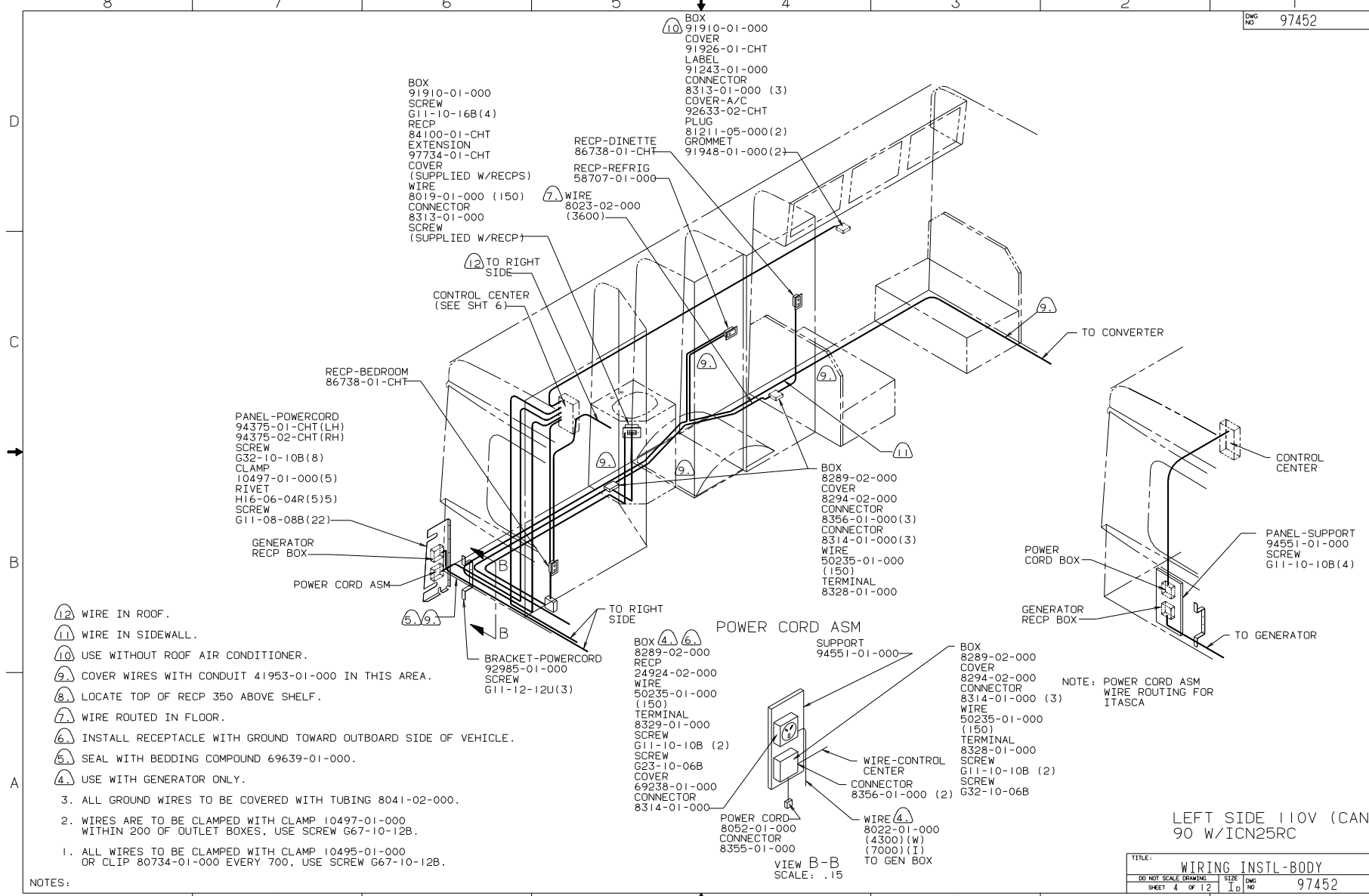


COVER LABEL 95721-01-000

NOTES: 1 ALL GROUND WIRES TO BE COVERED WITH TUBING 8041-02-000.

CONTROL CENTER (US)  
90 W/ICN25RC

TITLE: WIRING INSTL-BODY	
DO NOT SCALE DRAWING	SIZE
SHEET 3 OF 12	DWG NO 97452



- BOX 91910-01-000
- SCREW G11-10-16B(4)
- RECP 84100-01-CHT
- EXTENSION 97734-01-CHT
- COVER (SUPPLIED W/RECPS)
- WIRE 8019-01-000 (150)
- CONNECTOR 8313-01-000
- SCREW (SUPPLIED W/RECP)

- RECP-DINETTE 86738-01-CHT
- RECP-REFRIG 58707-01-000
- WIRE 8023-02-000 (3600)

- BOX 91910-01-000
- COVER 91926-01-CHT
- LABEL 91243-01-000
- CONNECTOR 8313-01-000 (3)
- COVER-A/C 92633-02-CHT
- PLUG 81211-05-000(2)
- GROMMET 91948-01-000(2)

- PANEL-POWERCORD 94375-01-CHT(LH)
- 94375-02-CHT(RH)
- SCREW G32-10-10B(8)
- CLAMP 10497-01-000(5)
- RIVET HI6-06-04R(5)S
- SCREW G11-08-08B(22)

- BOX 8289-02-000
- COVER 8294-02-000
- CONNECTOR 8356-01-000(3)
- CONNECTOR 8314-01-000(3)
- WIRE 50235-01-000 (150)
- TERMINAL 8328-01-000

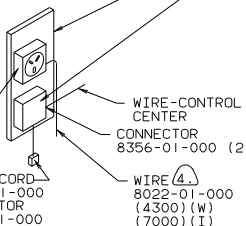
- BOX 8289-02-000
- RECP 92985-01-000
- WIRE 24924-02-000
- WIRE 50235-01-000 (150)
- TERMINAL 8329-01-000
- SCREW G11-10-10B (2)
- SCREW G23-10-06B
- COVER 69238-01-000
- CONNECTOR 8314-01-000

- 12 WIRE IN ROOF.
- 11 WIRE IN SIDEWALL.
- 10 USE WITHOUT ROOF AIR CONDITIONER.
- 9 COVER WIRES WITH CONDUIT 41953-01-000 IN THIS AREA.
- 8 LOCATE TOP OF RECP 350 ABOVE SHELF.
- 7 WIRE ROUTED IN FLOOR.
- 6 INSTALL RECEPTACLE WITH GROUND TOWARD OUTBOARD SIDE OF VEHICLE.
- 5 SEAL WITH BEDDING COMPOUND 69639-01-000.
- 4 USE WITH GENERATOR ONLY.

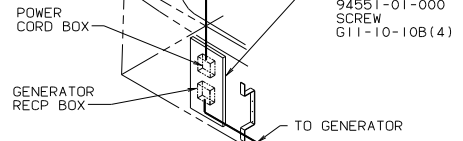
3. ALL GROUND WIRES TO BE COVERED WITH TUBING 8041-02-000.
2. WIRES ARE TO BE CLAMPED WITH CLAMP 10495-01-000 WITHIN 200 OF OUTLET BOXES. USE SCREW G67-10-12B.
1. ALL WIRES TO BE CLAMPED WITH CLAMP 10495-01-000 OR CLIP 80734-01-000 EVERY 700. USE SCREW G67-10-12B.

NOTES:

POWER CORD ASM



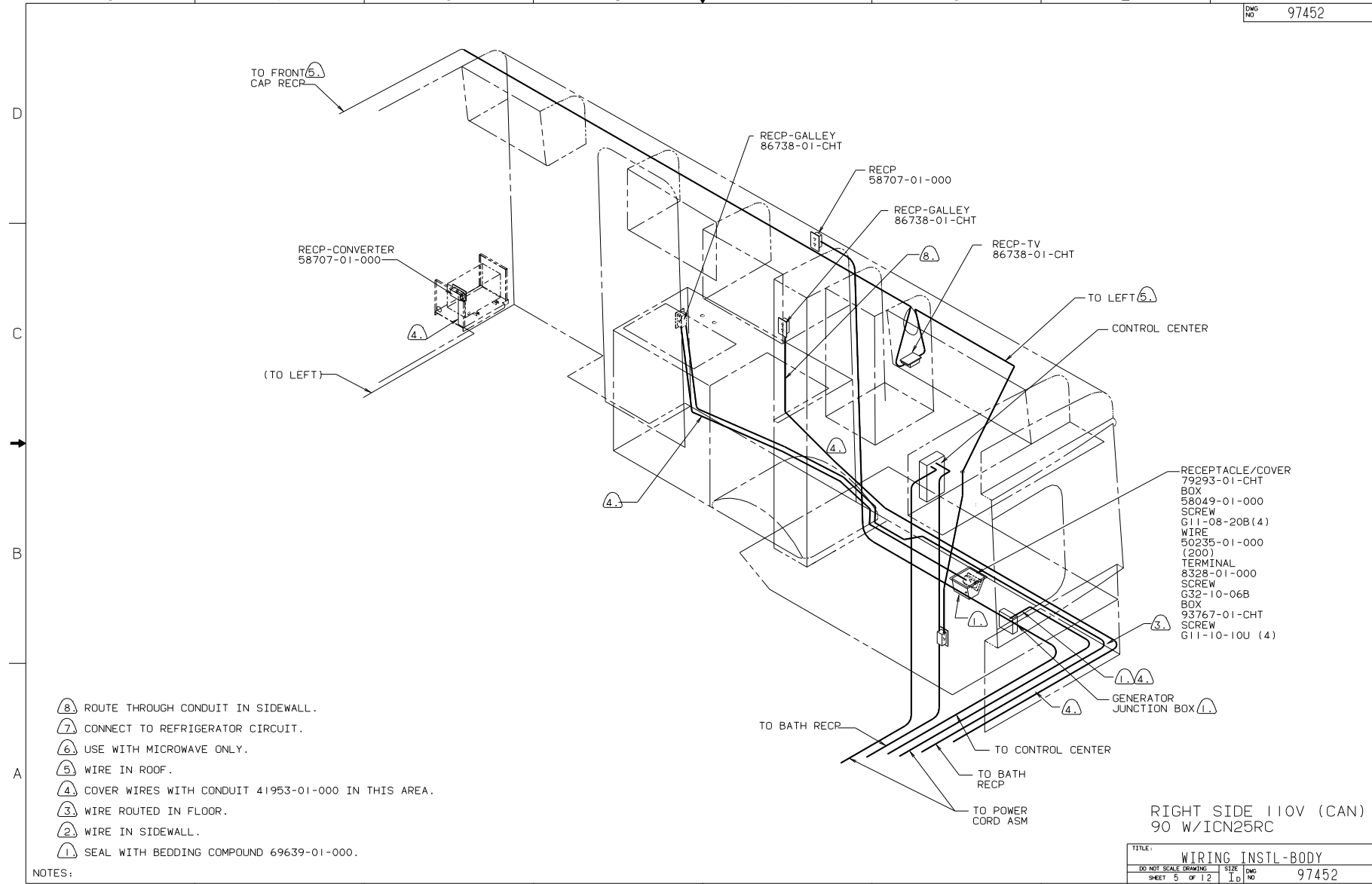
VIEW B-B SCALE: .15



NOTE: POWER CORD ASM WIRE ROUTING FOR ITASCA

LEFT SIDE 110V (CAN) 90 W/ICN25RC

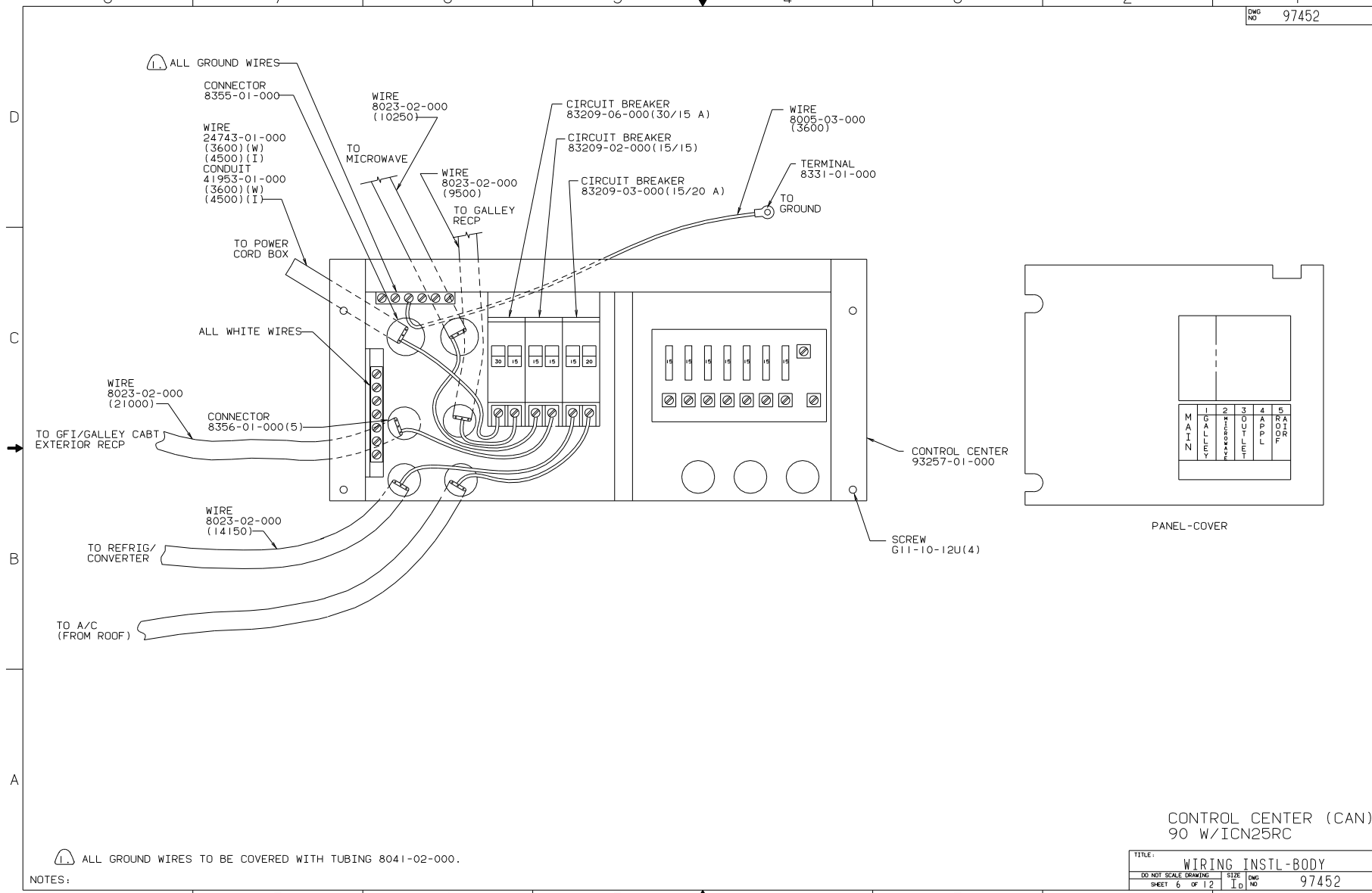
TITLE: WIRING INSTL-BODY	
DO NOT SCALE DRAWING	SIZE
SHEET 4 OF 12	DWG NO 97452



- NOTES:
- ⑧ ROUTE THROUGH CONDUIT IN SIDEWALL.
  - ⑦ CONNECT TO REFRIGERATOR CIRCUIT.
  - ⑥ USE WITH MICROWAVE ONLY.
  - ⑤ WIRE IN ROOF.
  - ④ COVER WIRES WITH CONDUIT 41953-01-000 IN THIS AREA.
  - ③ WIRE ROUTED IN FLOOR.
  - ② WIRE IN SIDEWALL.
  - ① SEAL WITH BEDDING COMPOUND 69639-01-000.

RIGHT SIDE 110V (CAN)  
90 W/ICN25RC

TITLE:		WIRING INSTL-BODY	
DO NOT SCALE DRAWING	SIZE	DWG NO	97452
SHEET 5	OF 12	1.0	

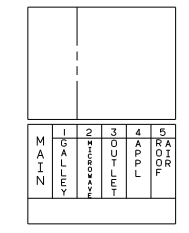


1. ALL GROUND WIRES  
 CONNECTOR 8355-01-000  
 WIRE 24743-01-000 (3600) (W) (4500) (I)  
 CONDUIT 41953-01-000 (3600) (W) (4500) (I)  
 TO POWER CORD BOX  
 ALL WHITE WIRES  
 WIRE 8023-02-000 (21000)  
 TO GFI/GALLEY CABT EXTERIOR RECP  
 CONNECTOR 8356-01-000(5)  
 WIRE 8023-02-000 (14150)  
 TO REFRIG/ CONVERTER  
 TO A/C (FROM ROOF)  
 WIRE 8023-02-000 (10250) TO MICROWAVE  
 WIRE 8023-02-000 (9500) TO GALLEY RECP  
 CIRCUIT BREAKER 83209-06-000(30/15 A)  
 CIRCUIT BREAKER 83209-02-000(15/15)  
 CIRCUIT BREAKER 83209-03-000(15/20 A)  
 WIRE 8005-03-000 (3600)  
 TERMINAL 8331-01-000 TO GROUND

CONTROL CENTER 93257-01-000

SCREW G11-10-12U(4)

PANEL-COVER

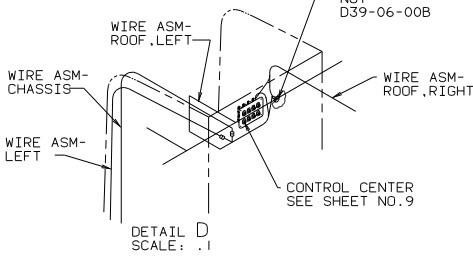
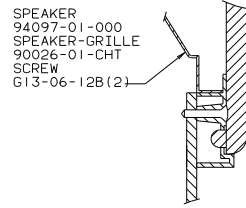
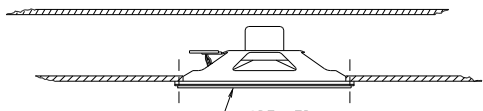
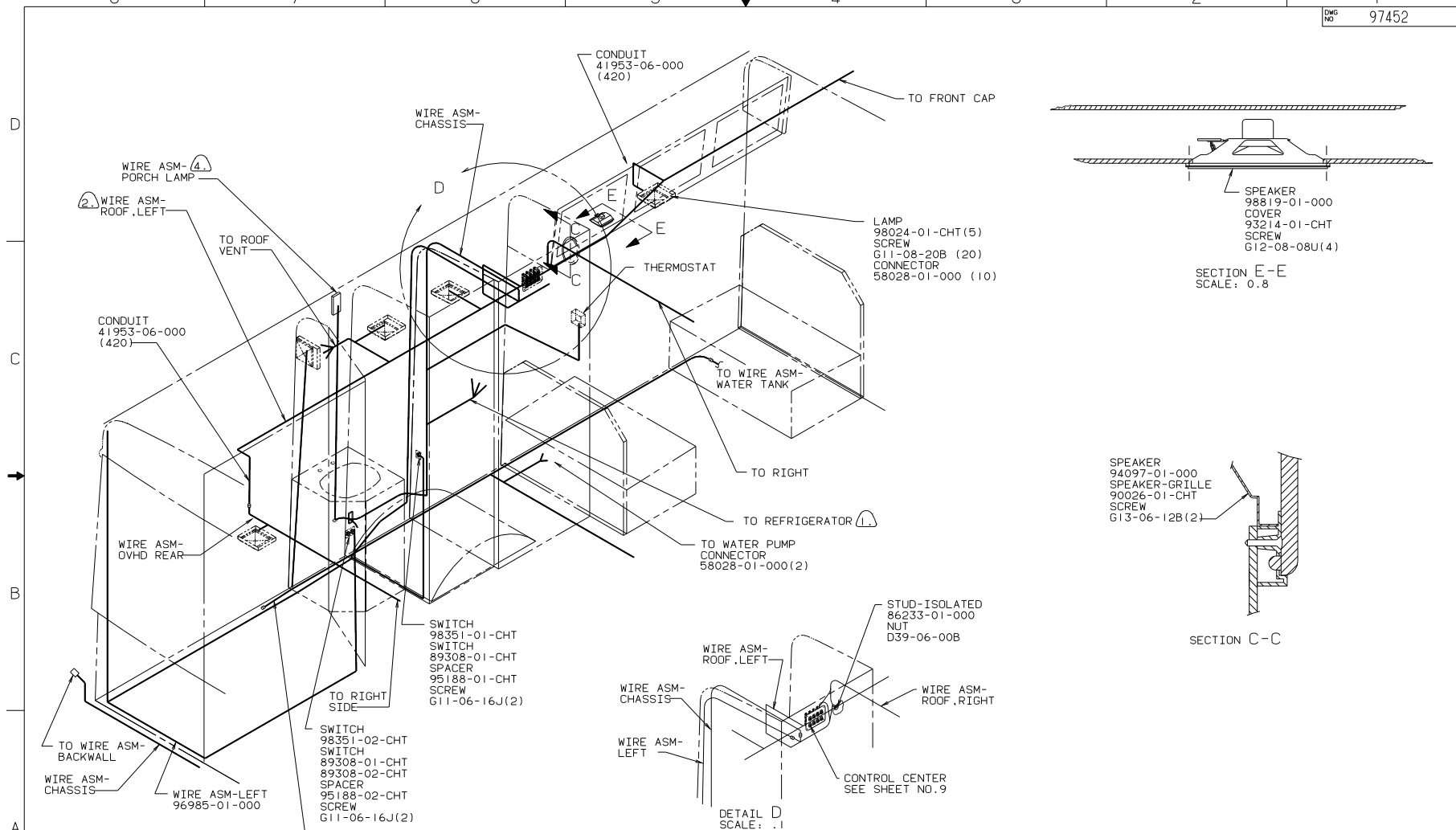


CONTROL CENTER (CAN)  
90 W/ICN25RC

1. ALL GROUND WIRES TO BE COVERED WITH TUBING 8041-02-000.

NOTES:

TITLE:		WIRING INSTL-BODY	
DO NOT SCALE DRAWING	SIZE	DWG NO	97452
SHEET 6	OF 12	I.D.	

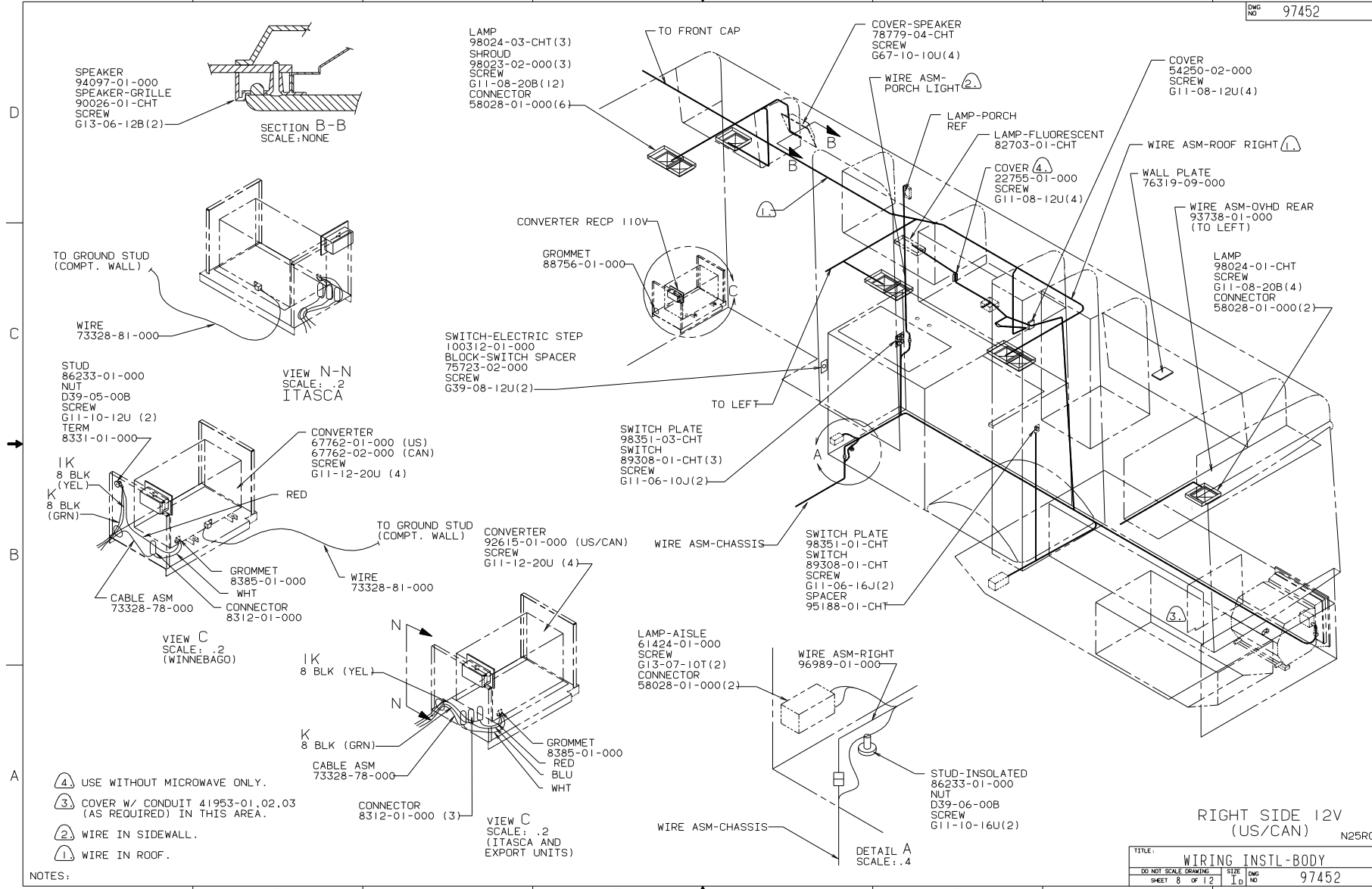


- NOTES:
- WIRE IN SIDEWALL.
  - WIRE IN ROOF.
  - ATTACH 8 GRN WIRE TO REFRIG BONDING TERMINAL LOCATED BENEATH GAS MANIFOLD WITH NUT D24-10-00B.

- USE WITH TV.
- WIRES TO BE TIED SO AS TO SECURE WIRE LENGTHS IN AN ORGANIZED MANNER USING TIE 8343-01-000 AS REQUIRED.
- ALL WIRES TO BE SECURED EVERY 900 WITH CLAMP 10497-01.02.03 (AS REQUIRED). SCREW G11-10-10B.

LEFT SIDE 12V (US/CAN)  
90 W/ICN25RC

TITLE:		WIRING INSTL-BODY	
DO NOT SCALE DRAWING	SIZE	DWG NO	97452
SHEET 7	OF 12	1.0	



- NOTES:
- ④ USE WITHOUT MICROWAVE ONLY.
  - ③ COVER W/ CONDUIT 41953-01.02.03 (AS REQUIRED) IN THIS AREA.
  - ② WIRE IN SIDEWALL.
  - ① WIRE IN ROOF.

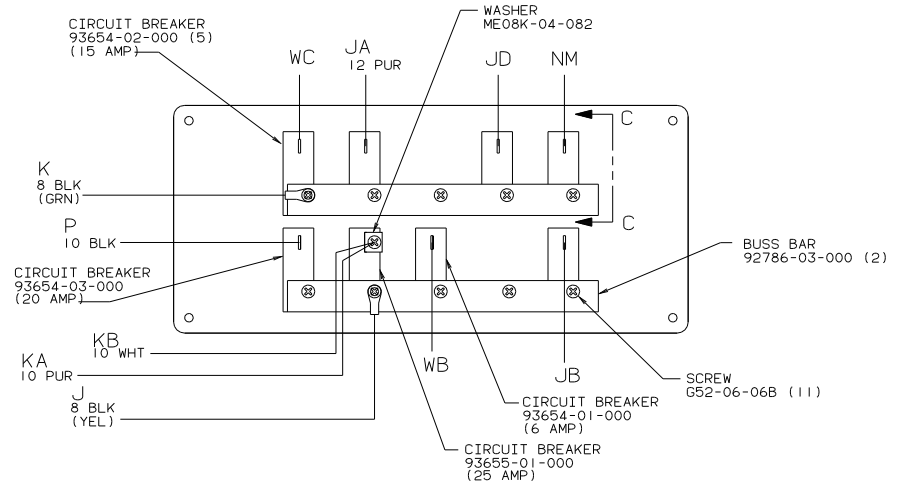
RIGHT SIDE 12V (US/CAN) N25RC

TITLE: WIRING INSTL-BODY	
DO NOT SCALE DRAWING	SIZE DWG NO 97452
SHEET 8 OF 12	10

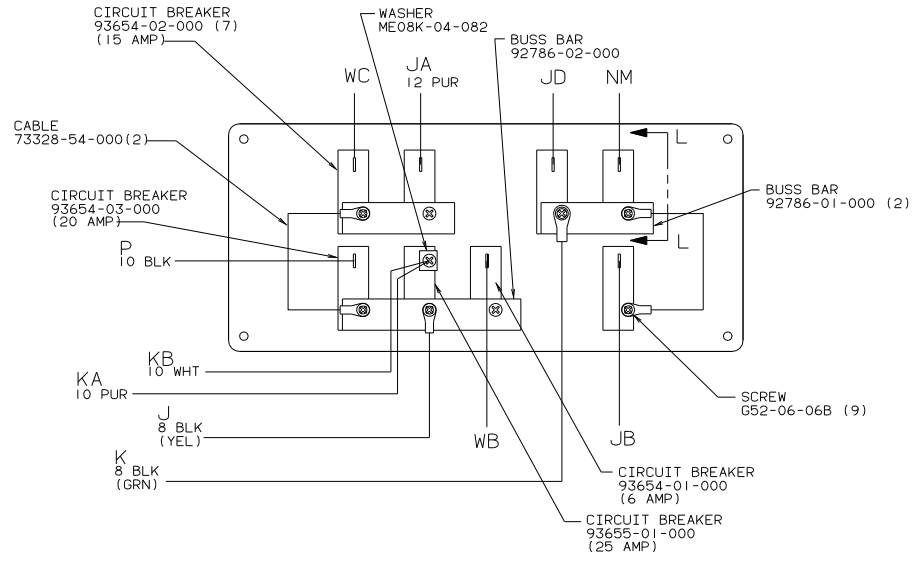
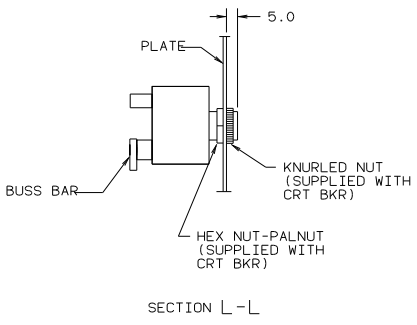


8 7 6 5 4 3 2 1

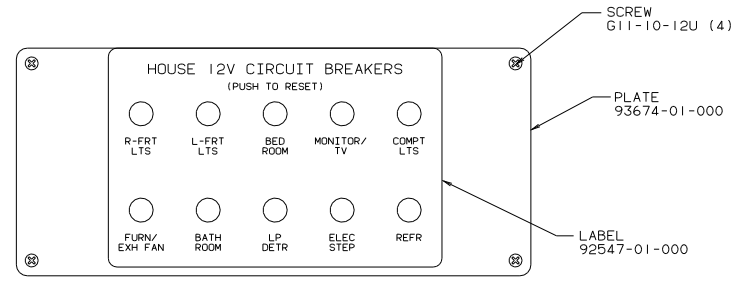
D  
C  
B  
A



CIRCUIT BREAKER (W)  
(BACK VIEW)



CIRCUIT BREAKER (I)  
(BACK VIEW)

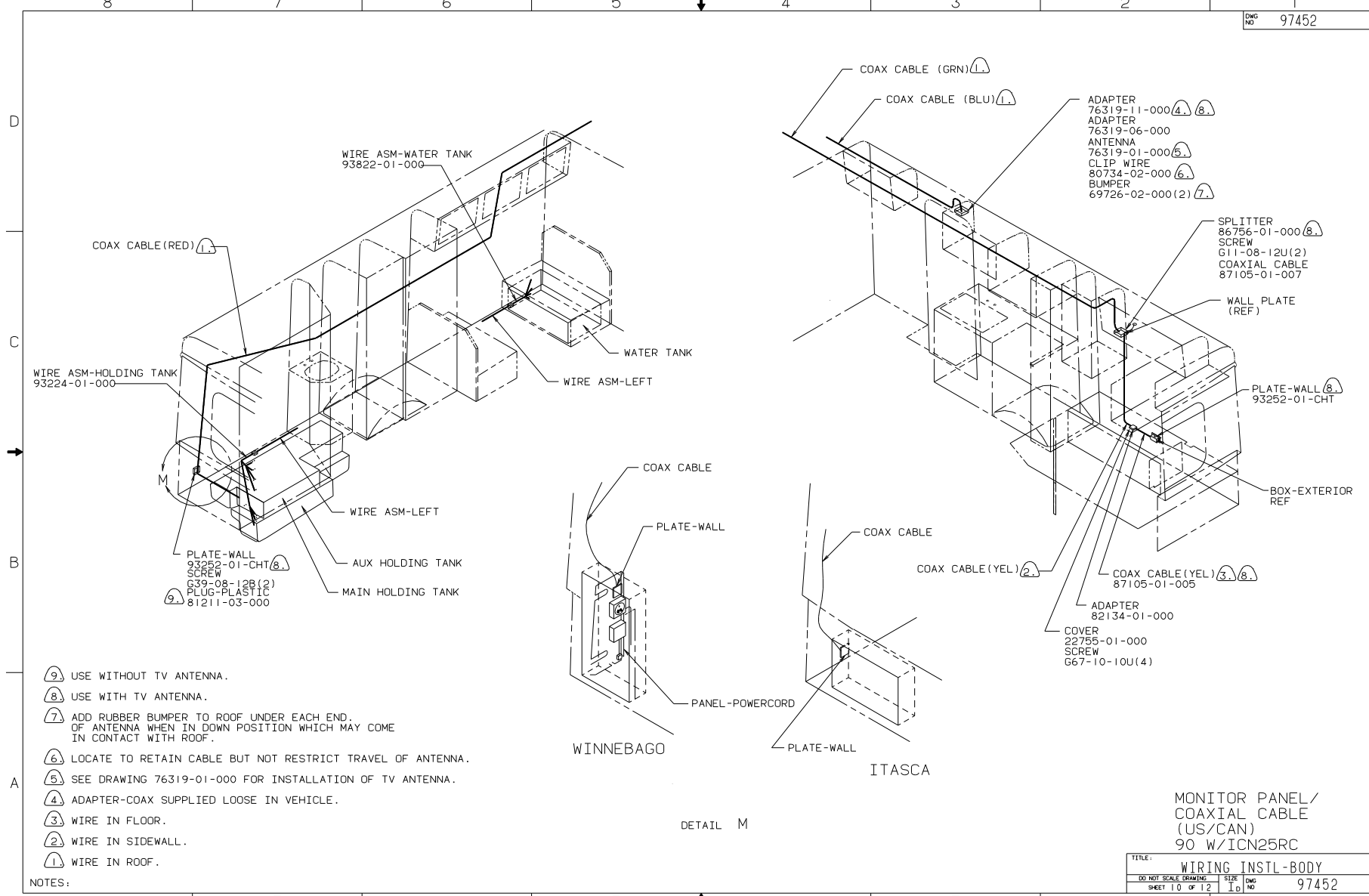


CIRCUIT BREAKER  
(FRONT VIEW)

12V CONTROL CENTER (US/CAN)  
90 W/ICN25RC

TITLE:		WIRING INSTL-BODY	
DO NOT SCALE DRAWING	SIZE	DWG NO	97452
SHEET 9	OF 12	1.0	

8 7 6 5 4 3 2 1



- ⑨ USE WITHOUT TV ANTENNA.
- ⑧ USE WITH TV ANTENNA.
- ⑦ ADD RUBBER BUMPER TO ROOF UNDER EACH END OF ANTENNA WHEN IN DOWN POSITION WHICH MAY COME IN CONTACT WITH ROOF.
- ⑥ LOCATE TO RETAIN CABLE BUT NOT RESTRICT TRAVEL OF ANTENNA.
- ⑤ SEE DRAWING 76319-01-000 FOR INSTALLATION OF TV ANTENNA.
- ④ ADAPTER-COAX SUPPLIED LOOSE IN VEHICLE.
- ③ WIRE IN FLOOR.
- ② WIRE IN SIDEWALL.
- ① WIRE IN ROOF.

NOTES:

WINNEBAGO

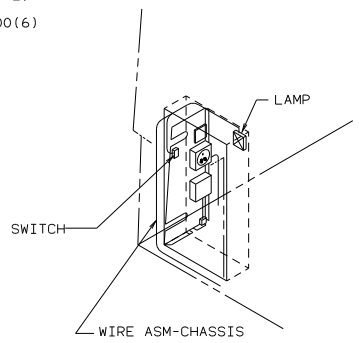
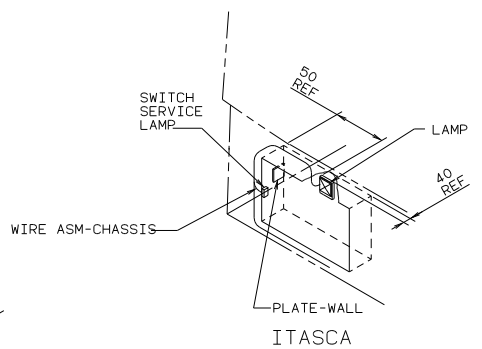
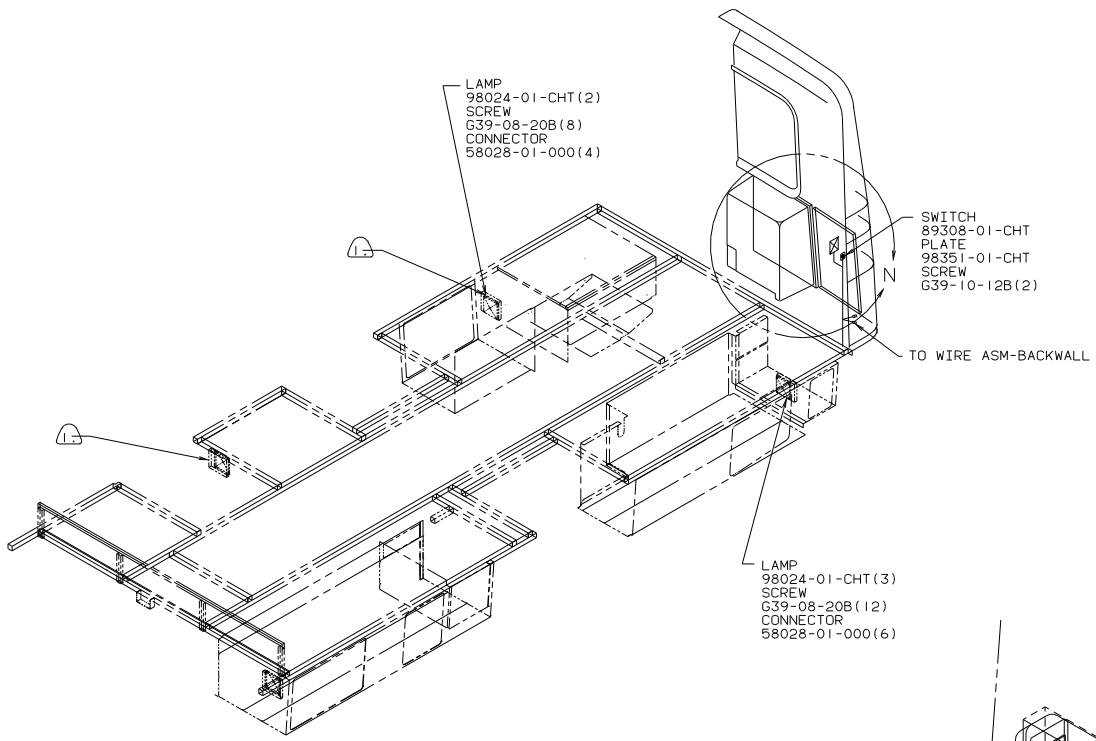
ITASCA

DETAIL M

MONITOR PANEL/  
COAXIAL CABLE  
(US/CAN)  
90 W/ICN25RC

TITLE:		WIRING INSTL-BODY	
DO NOT SCALE DRAWING	SIZE	DWG NO	97452
SHEET 10 OF 12	10		

D  
C  
B  
A



VIEW N  
(ROTATED 180°)

USE WITH WINNEBAGO.

NOTES:

COMPARTMENT LAMPS  
(US/CAN)  
90 W/ICN25RC

TITLE:		WIRING INSTL-BODY	
DO NOT SCALE DRAWING	SHEET	DWG NO	97452
	11 OF 12		

