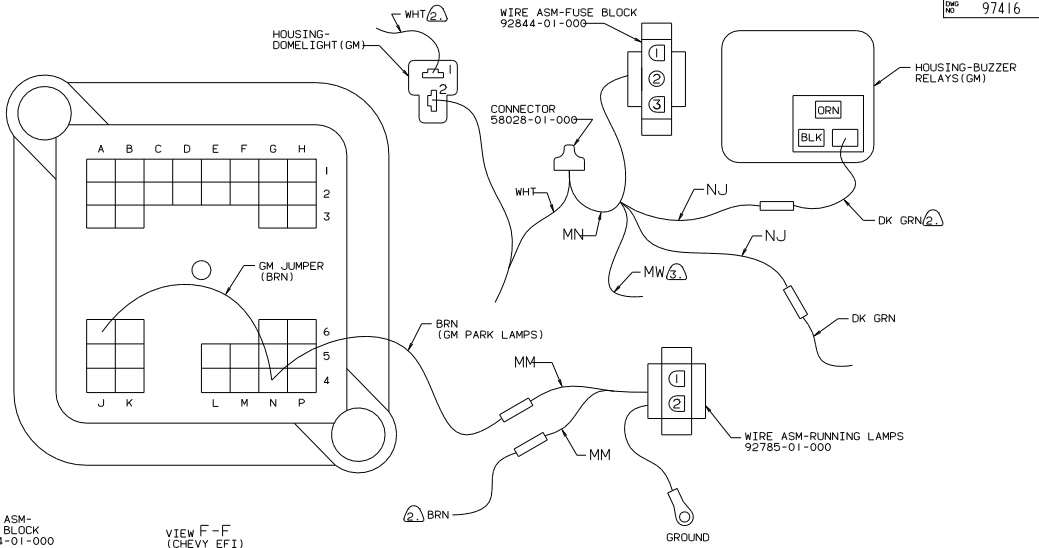


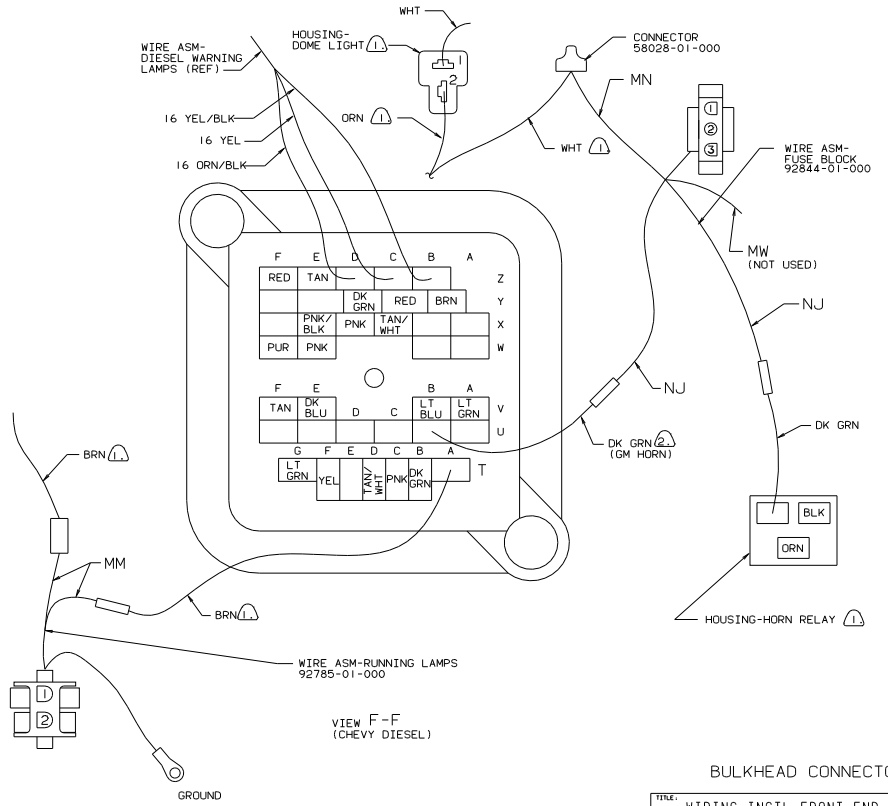
FRONT CAB WIRING



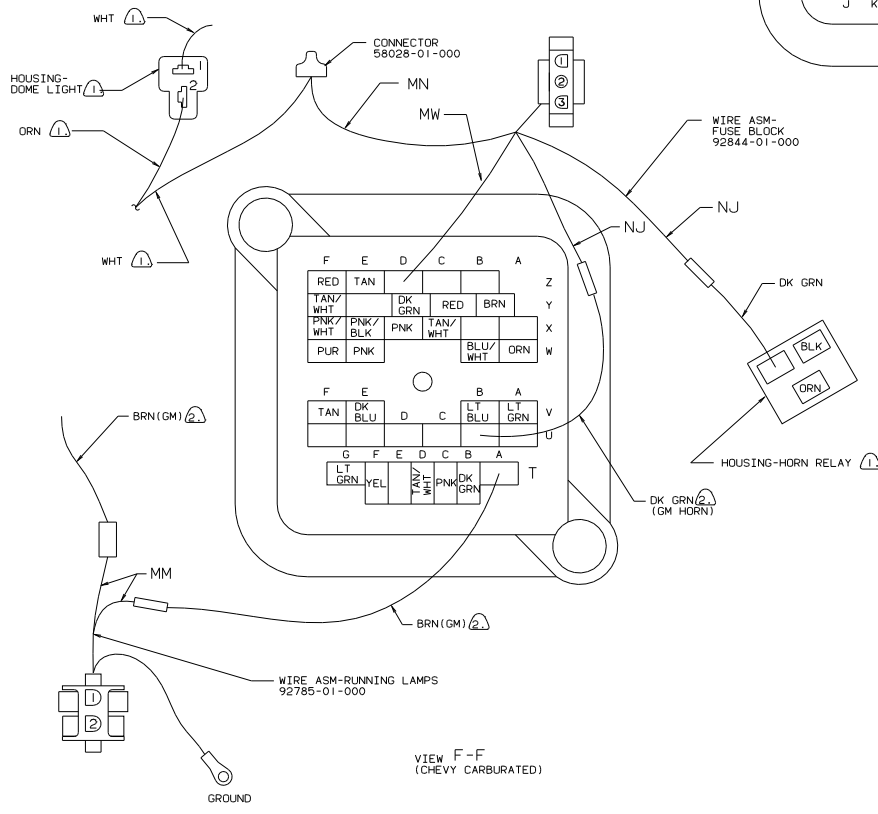
DATE	UNSPECIFIED TOLERANCES ARE:	MATERIAL
QTY	FRAMES 1/8 IN	FRAMES 1/8 IN
CHG	ONE-PIECE 1/8 IN	FRAMES 1/8 IN
P/E	TWO-PIECE 1/8 IN	FRAMES 1/8 IN
M/E	ANGLE	FRAMES 1/8 IN
Q/DWG	THIRD ANGLE PROJECTION	FRAMES 1/8 IN
LAYOUT NO.	TITLE	WIRING INSTL-FRONT END
QTY #	SCALE	NO NOT SCALE DIMENSIONS
ALL DIMENSIONS ARE IN MILLIMETERS	SHEET 1 OF 1	97416



VIEW F-F (CHEVY EF1)

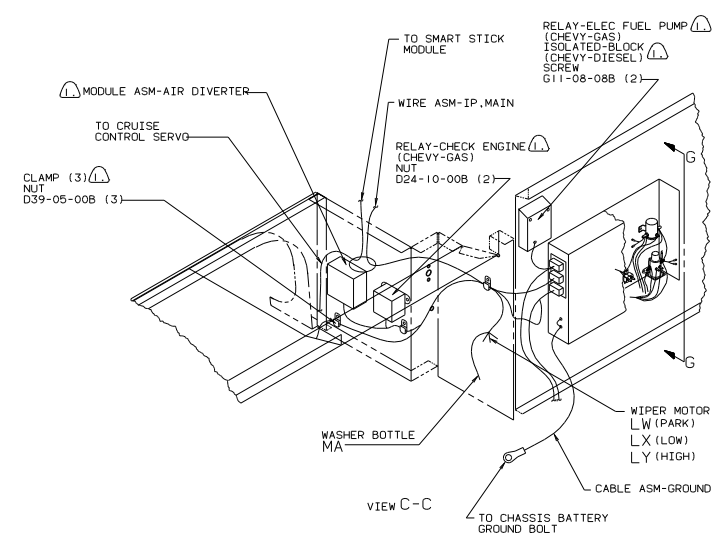
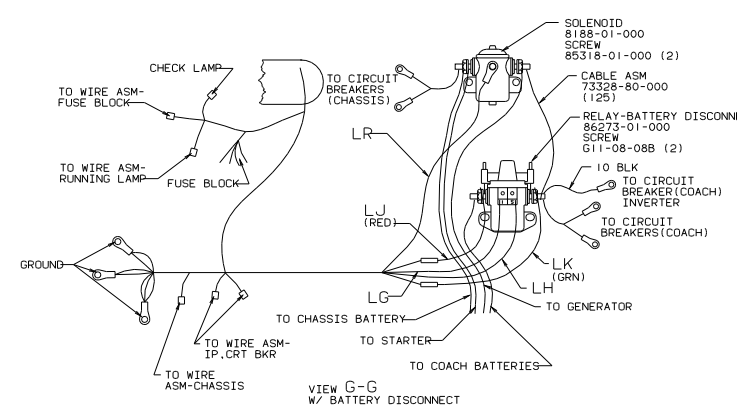
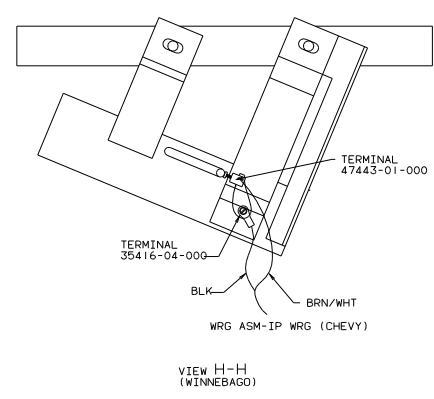
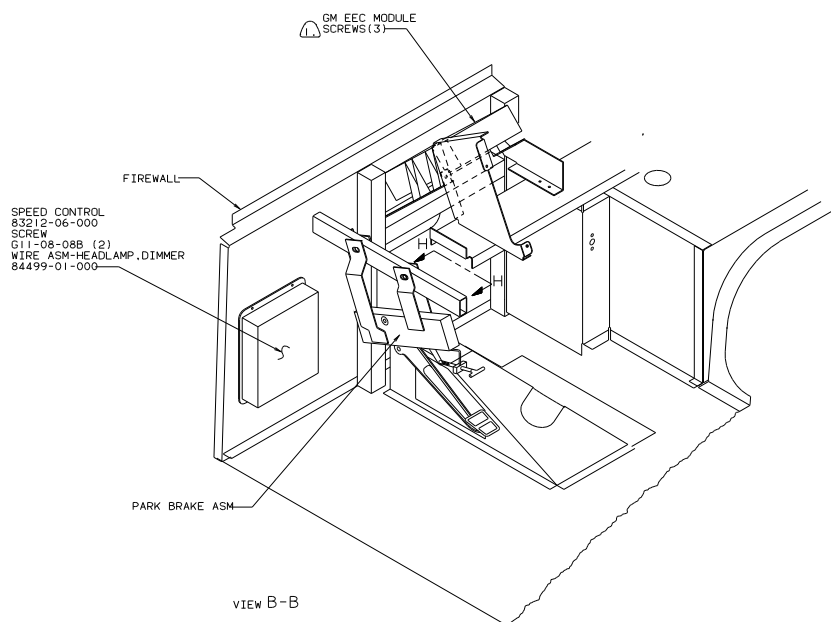


VIEW F-F (CHEVY DIESEL)



VIEW F-F (CHEVY CARBURATED)

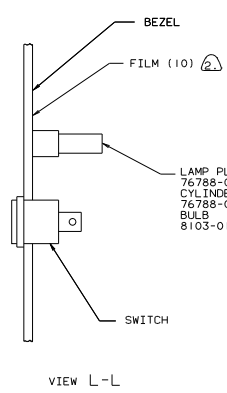
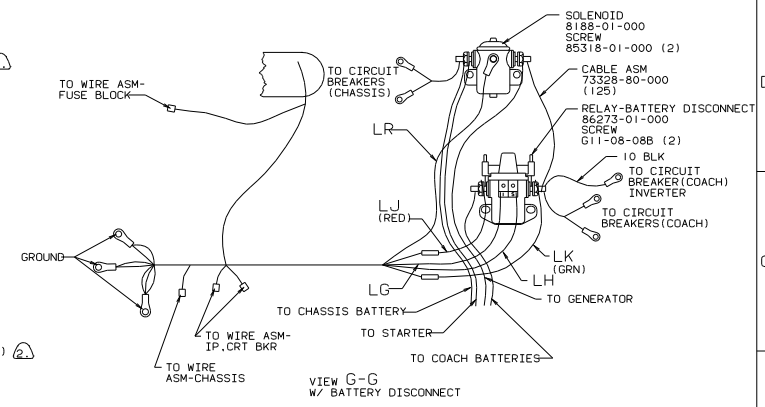
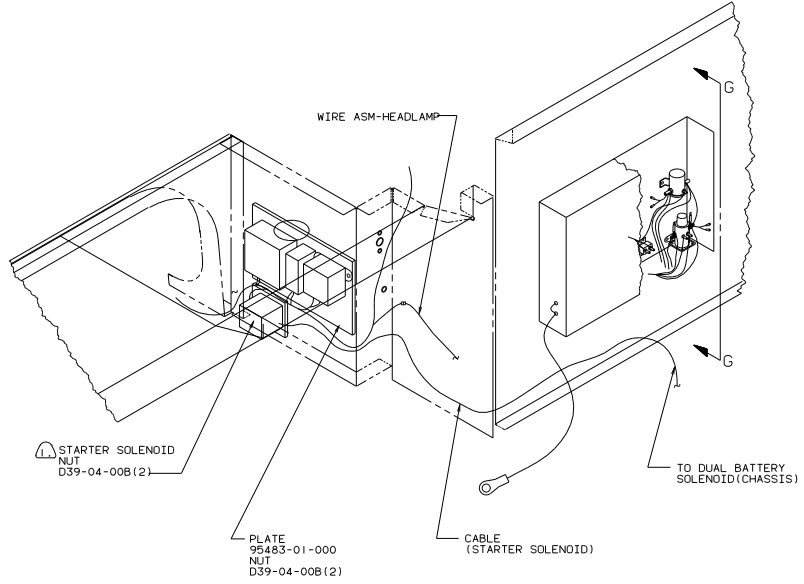
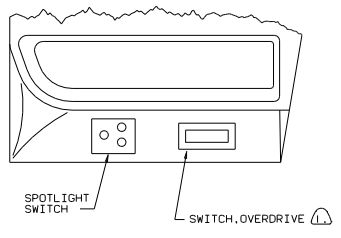
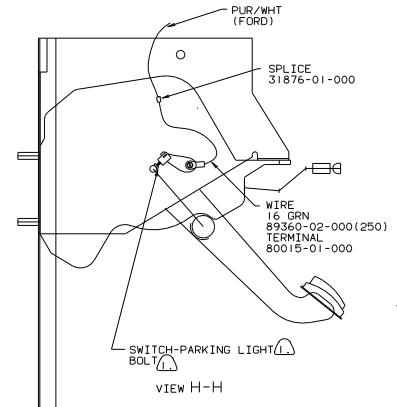
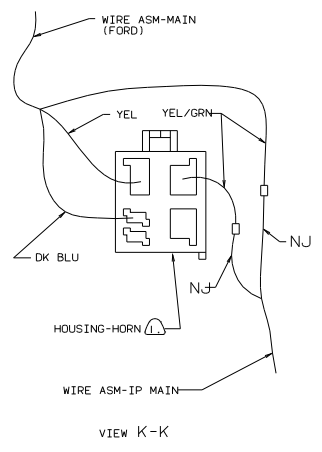
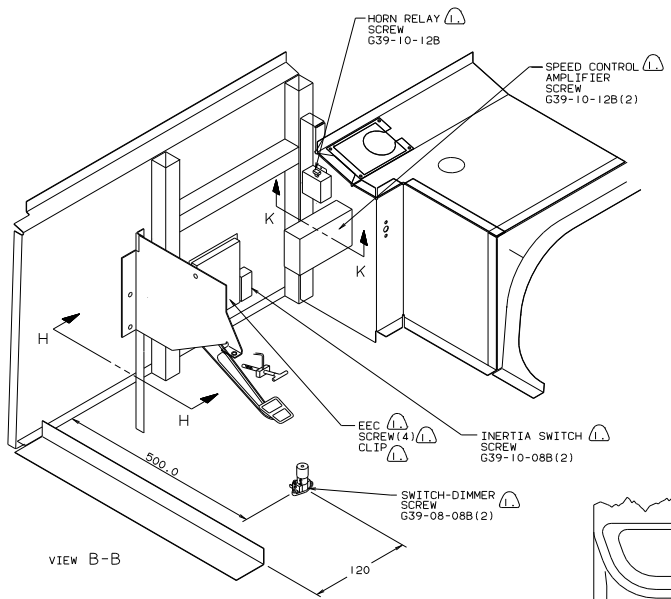
- NOTES:
- ③ TAPE LEAD OFF WITH 7957-01-000.
 - ② CUT EXISTING WIRE AND RECONNECT AS SHOWN.
 - ① CHASSIS SUPPLIED.



INTERIOR AND EXTERIOR DASH PANEL (CHEVY)

2 CUT TAN/WHT WIRE ON GM WIRE ASM.
 1 CHASSIS SUPPLIED.

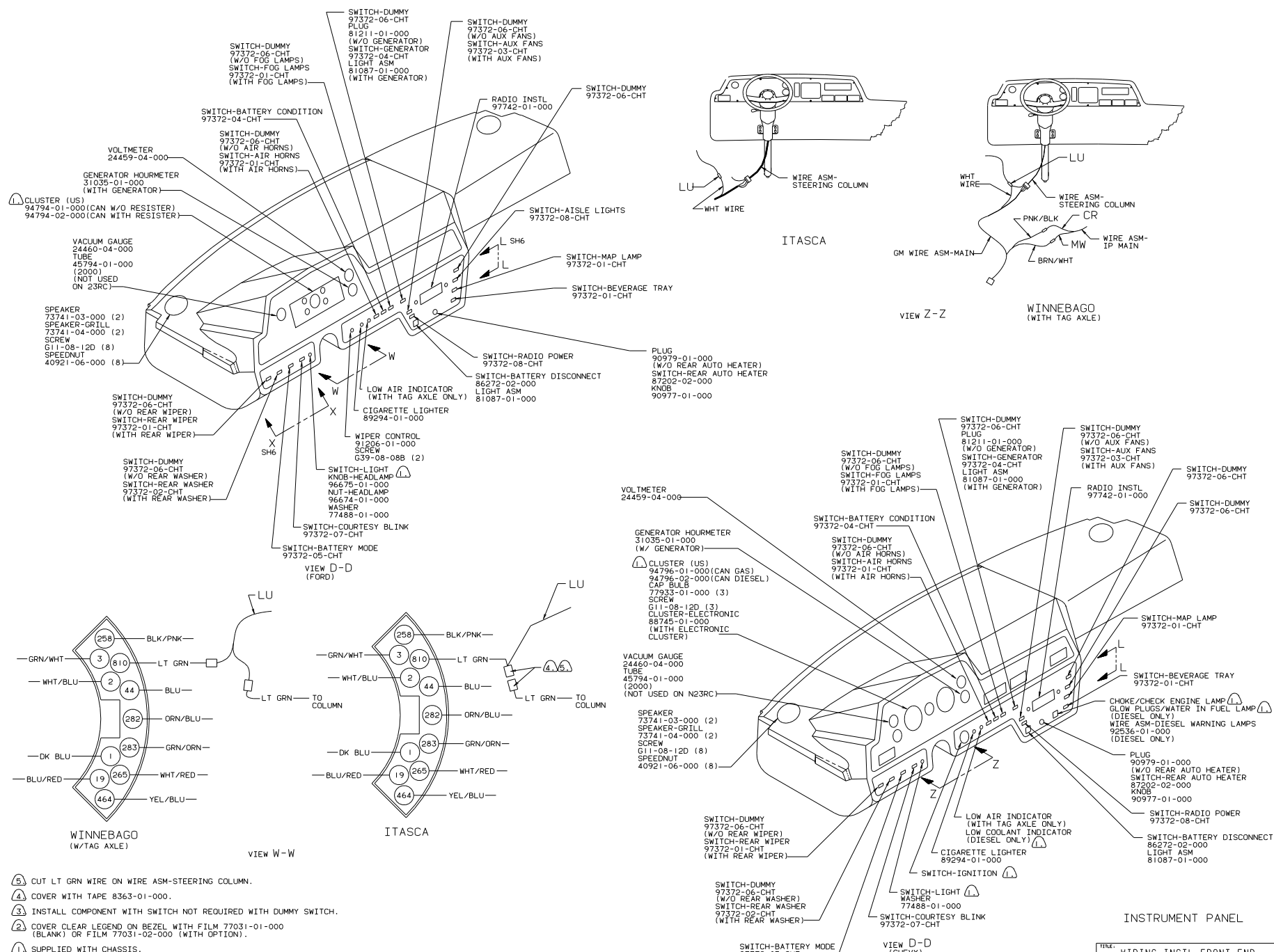
TITLE: WIRING INSTL-FRONT END	
30 MIL SCALE DRAWING	SIZE 1/4" = 1"
SHEET 5 OF 17	DATE 11/01/09
97416	



INTERIOR AND EXTERIOR DASH-FRONT END (FORD)

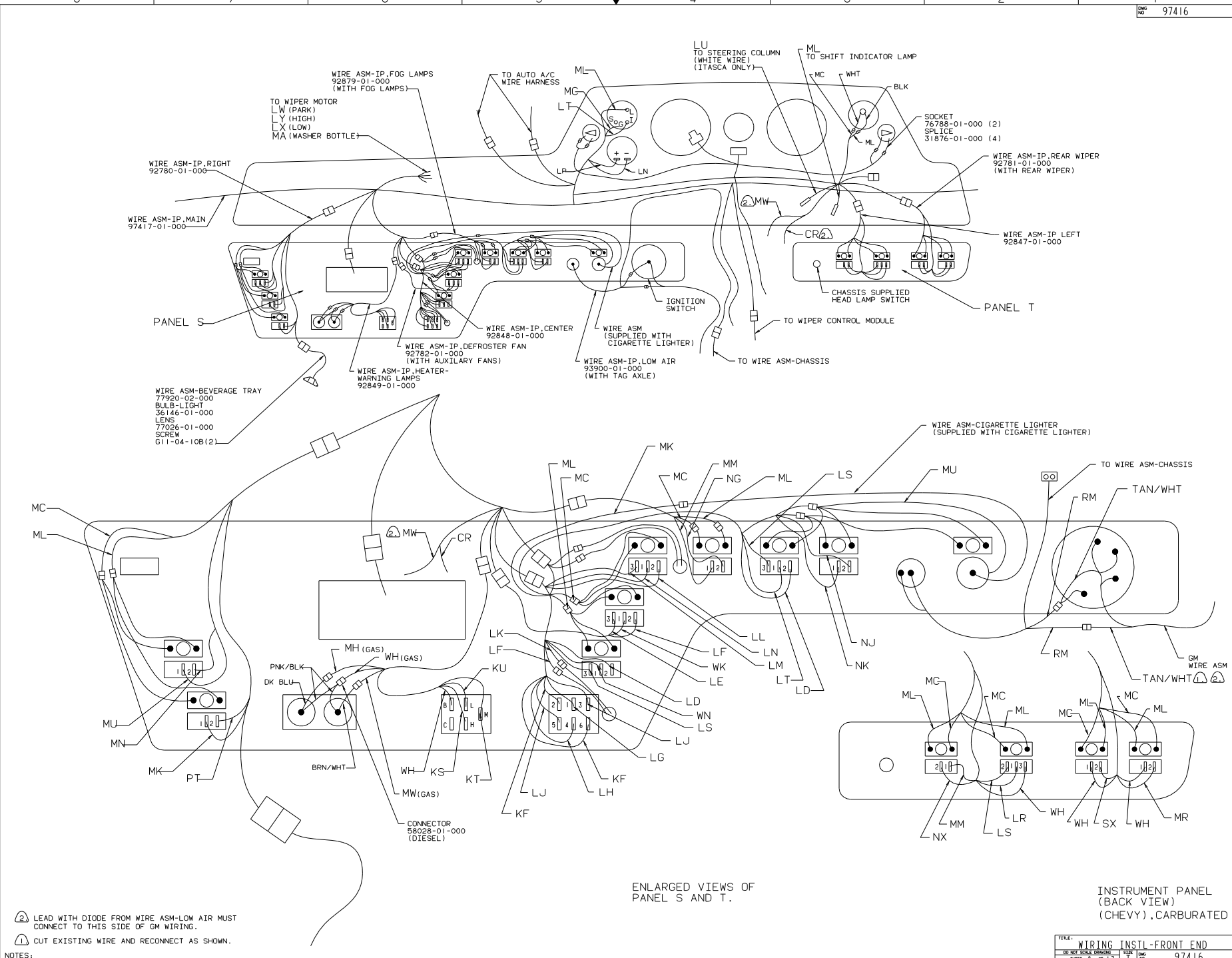
TITLE: WIRING INSTL-FRONT END	
30 NET SCALE (DRAWING)	SIZE 11E
SHEET 6 OF 17	FIG NO 97416

CHASSIS SUPPLIED.



- ⑤ CUT LT GRN WIRE ON WIRE ASM-STEERING COLUMN.
- ④ COVER WITH TAPE 8363-01-000.
- ③ INSTALL COMPONENT WITH SWITCH NOT REQUIRED WITH DUMMY SWITCH.
- ② COVER CLEAR LEGEND ON BEZEL WITH FILM 77031-01-000 (BLANK) OR FILM 77031-02-000 (WITH OPTION).
- ① SUPPLIED WITH CHASSIS.

TITLE: WIRING INSTL-FRONT END	
30 MIL SCALE DRAWING	1 of 17
SHEET 7	97416

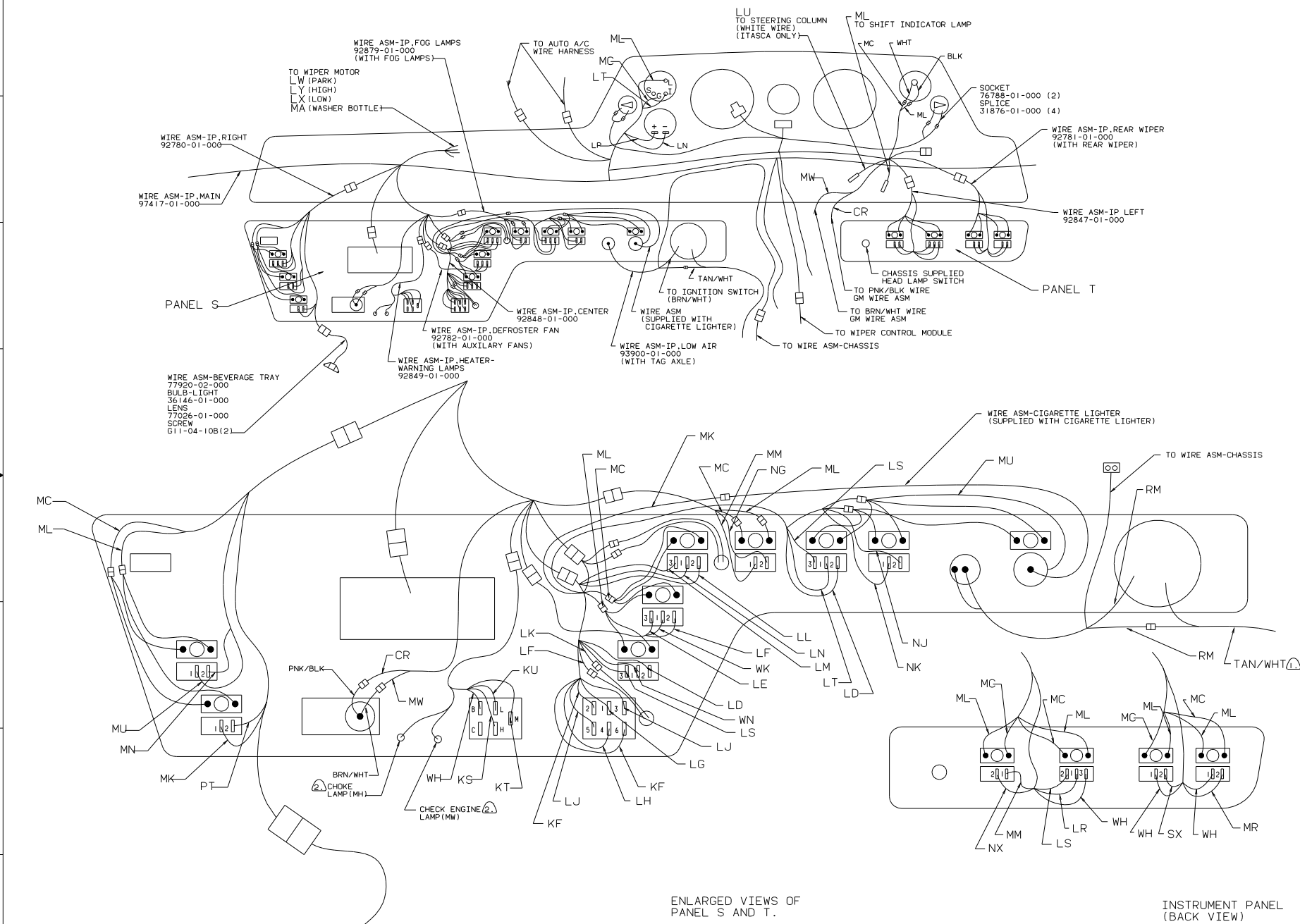


ENLARGED VIEWS OF
PANEL S AND T.

INSTRUMENT PANEL
(BACK VIEW)
(CHEVY), CARBURATED

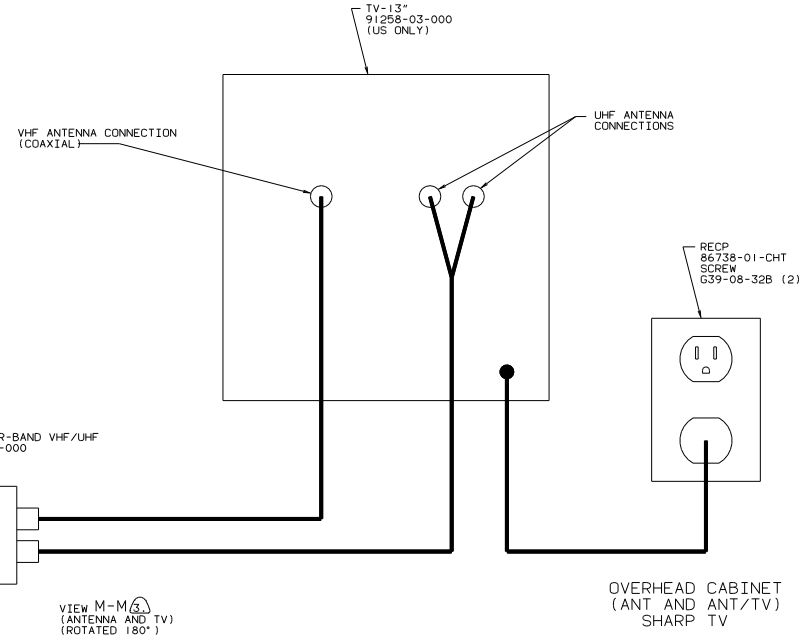
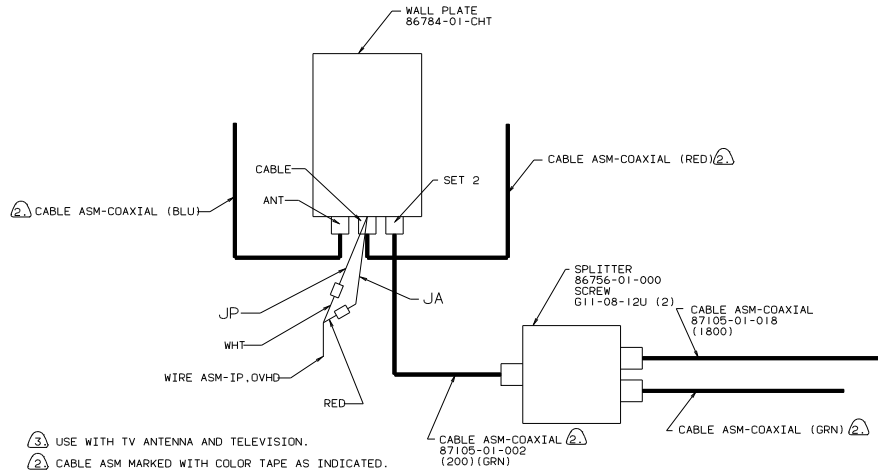
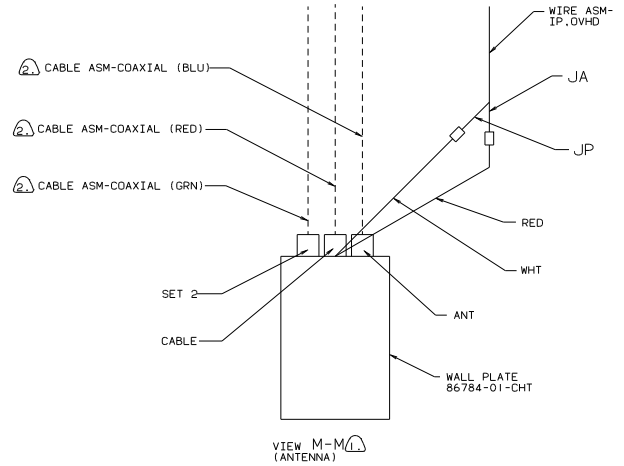
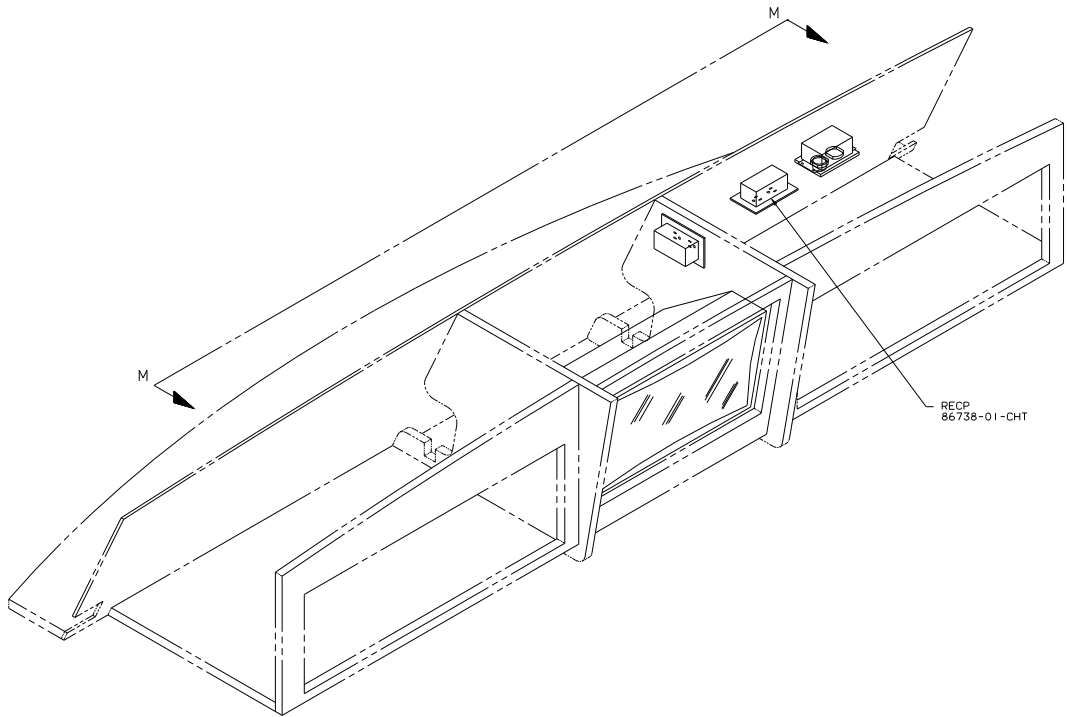
TITLE: WIRING INSTL-FRONT END	
30 X 10 SCALE DRAWING	SIZE: 11x17
SHEET 8 OF 17	DWG NO 97416

- NOTES:
- ② LEAD WITH DIODE FROM WIRE ASM-LOW AIR MUST CONNECT TO THIS SIDE OF GM WIRING.
 - ① CUT EXISTING WIRE AND RECONNECT AS SHOWN.



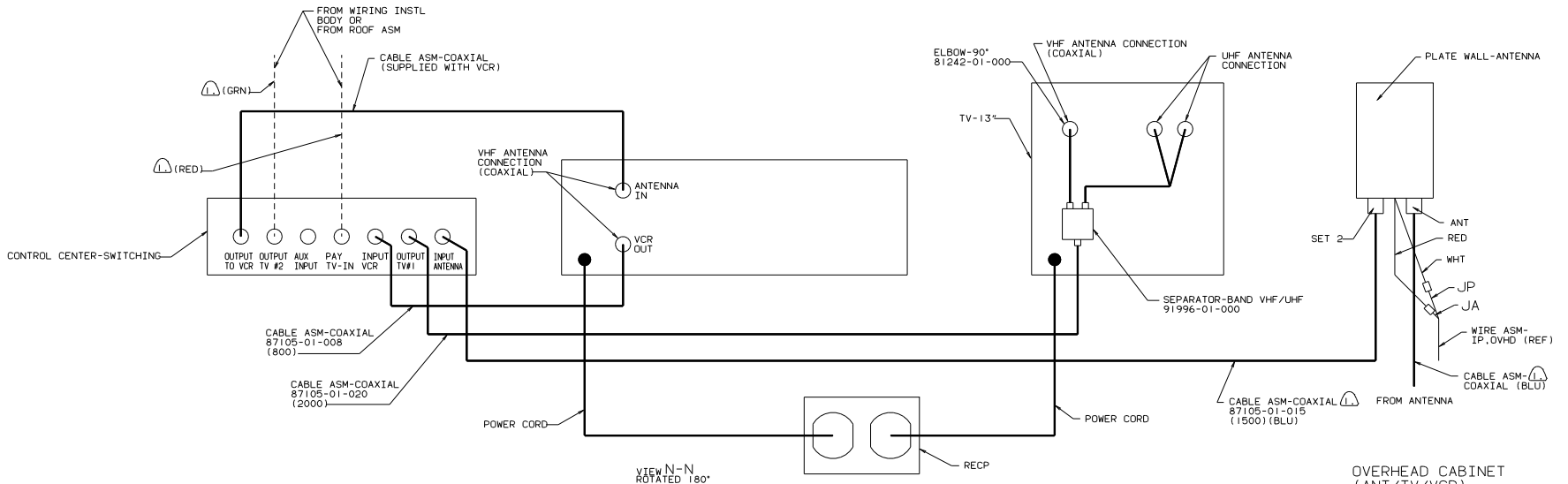
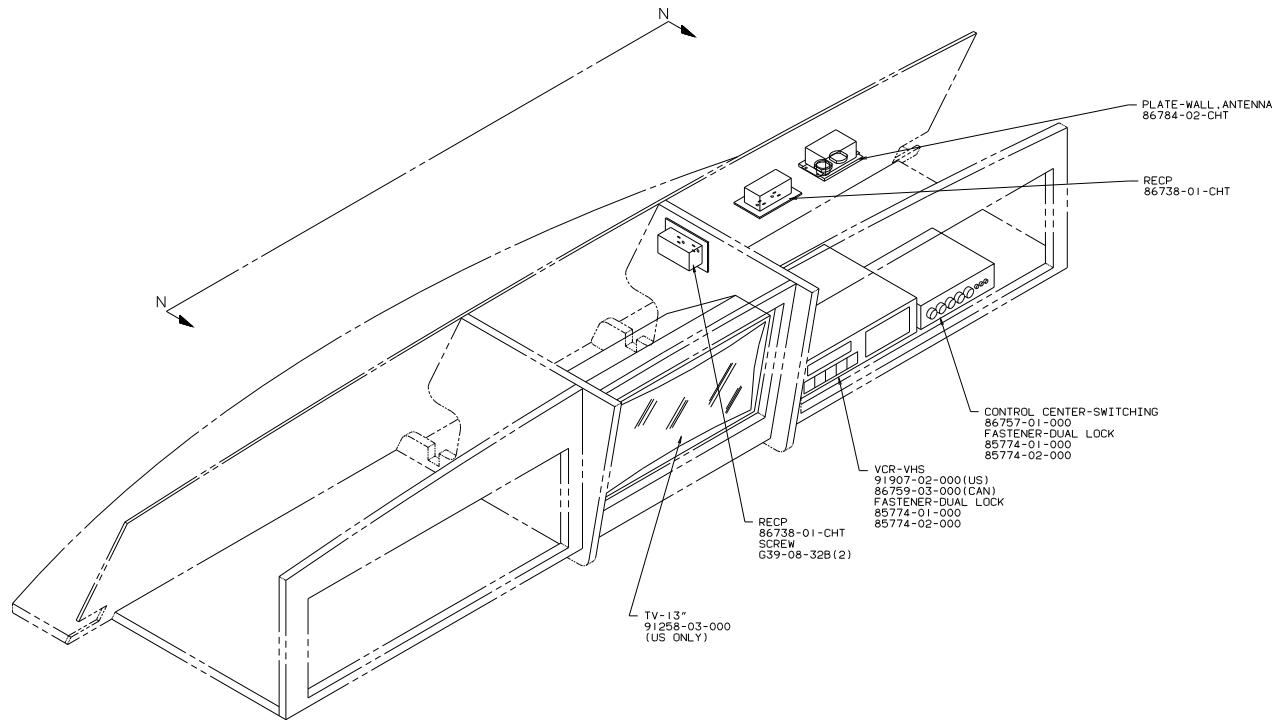
- ② NOT USED ON THIS MODEL.
- ① REMOVE FROM IGNITION SWITCH HOUSING; REMOVE TERMINAL AND SPLICE RM WIRE TO TAN/WHT WIRE.

NOTES:



- ③ USE WITH TV ANTENNA AND TELEVISION.
- ② CABLE ASM MARKED WITH COLOR TAPE AS INDICATED.
- ① USE WITH TV ANTENNA.

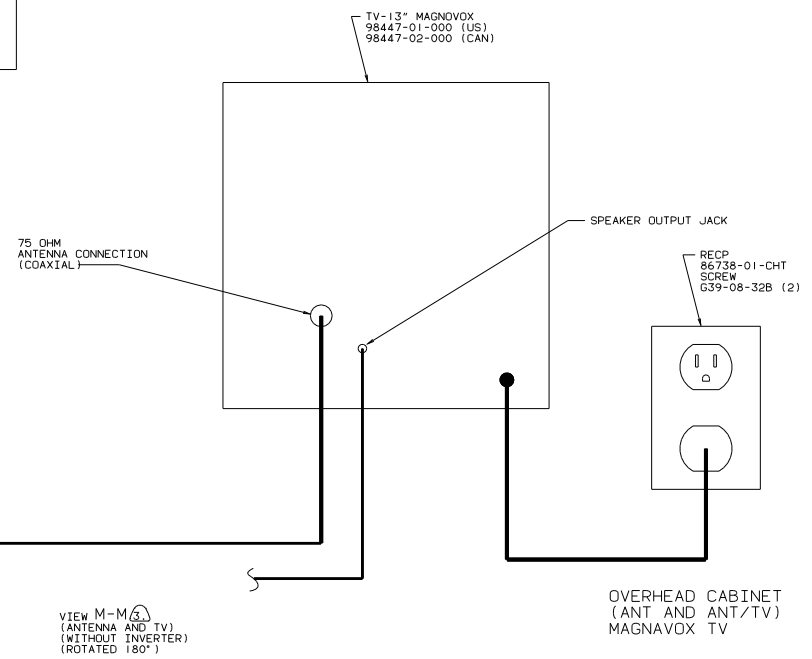
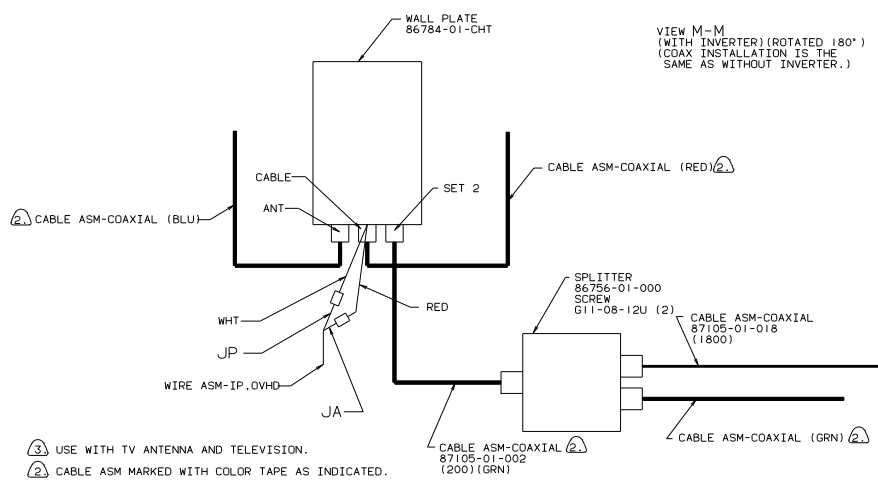
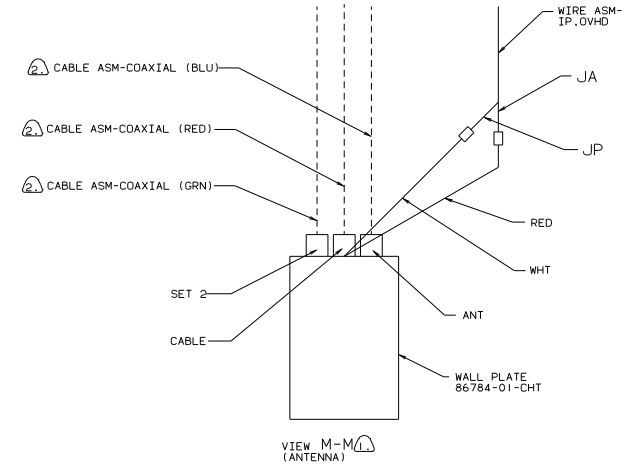
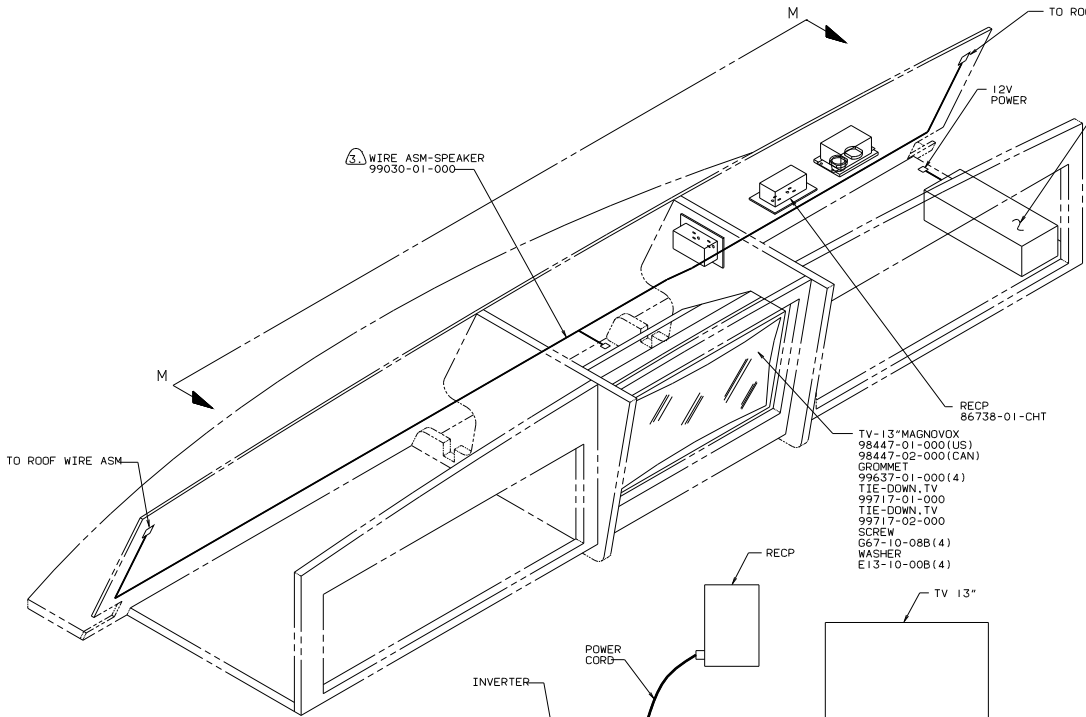
TITLE		WIRING INSL-FRONT END	
30 NET SCALE DRAWING	FILE NO	1 of 17	97416
SHEET	11	17	



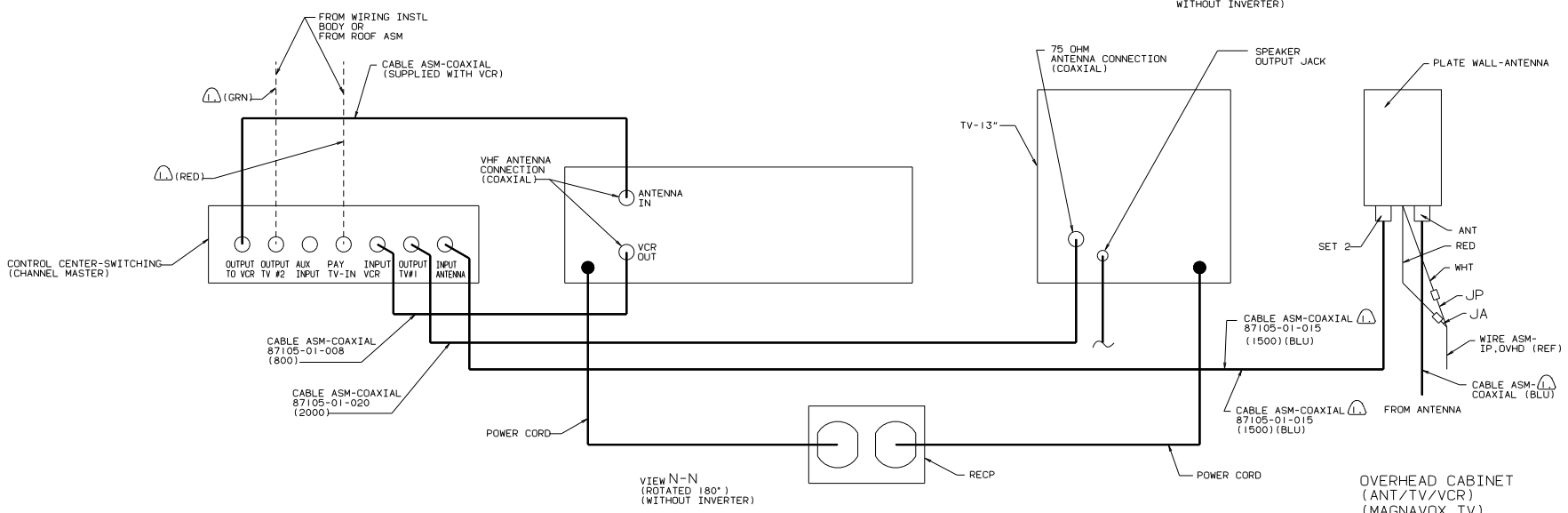
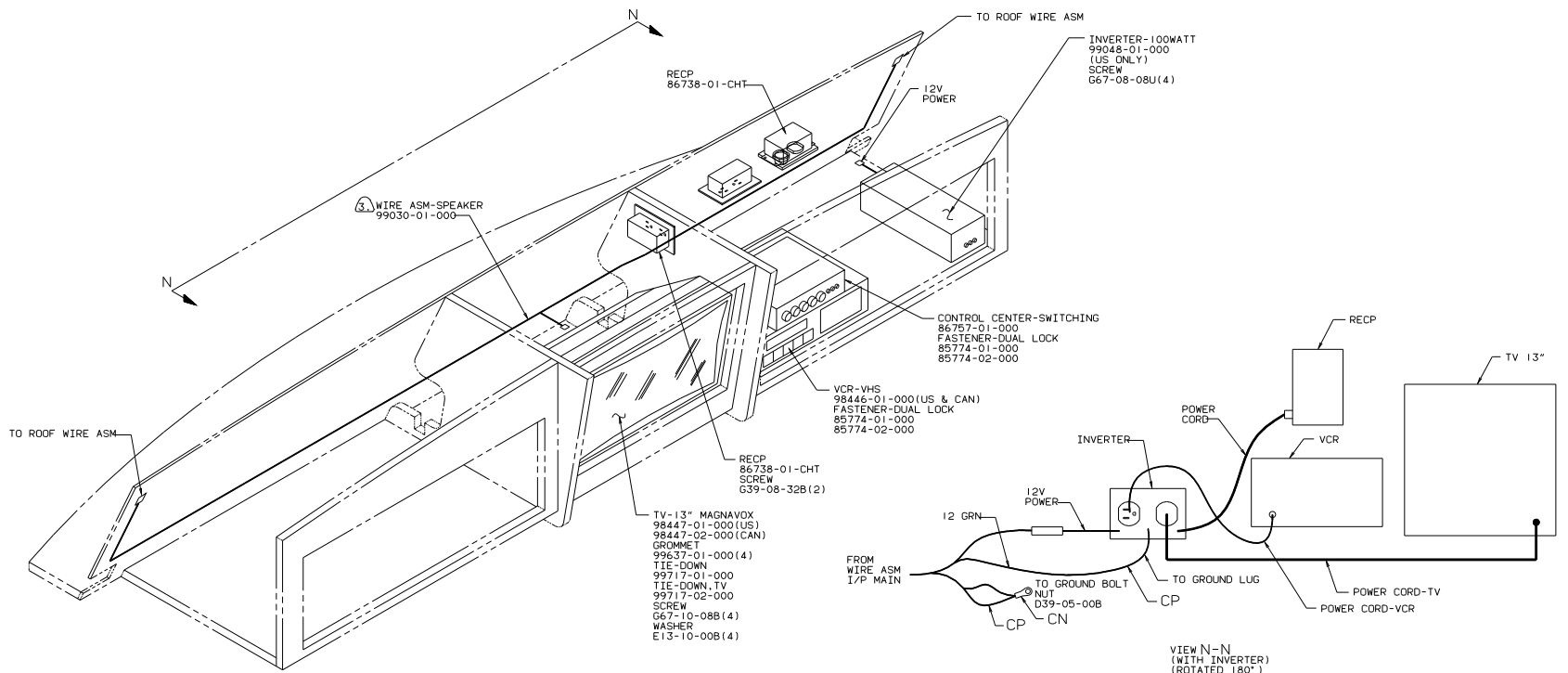
OVERHEAD CABINET (ANT/TV/VCR)
 SHARP TV
 SHARP VCR(US)
 GENERAL ELECTRIC VCR(CAN)

⚠ CABLE ASM MARKED WITH COLOR TAPE AS INDICATED.

TITLE: WIRING INSTL-FRONT END	
30 MIL SCALE DRAWING	SIZE 1 1/8"
SHEET 12 OF 17	DATE 11/80



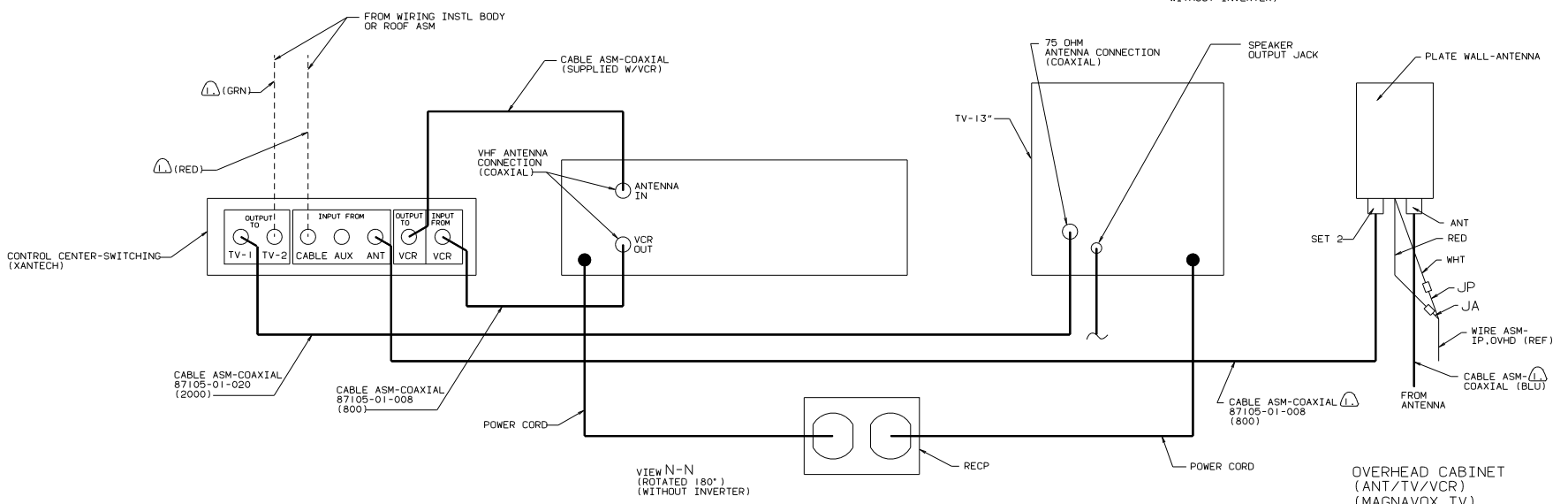
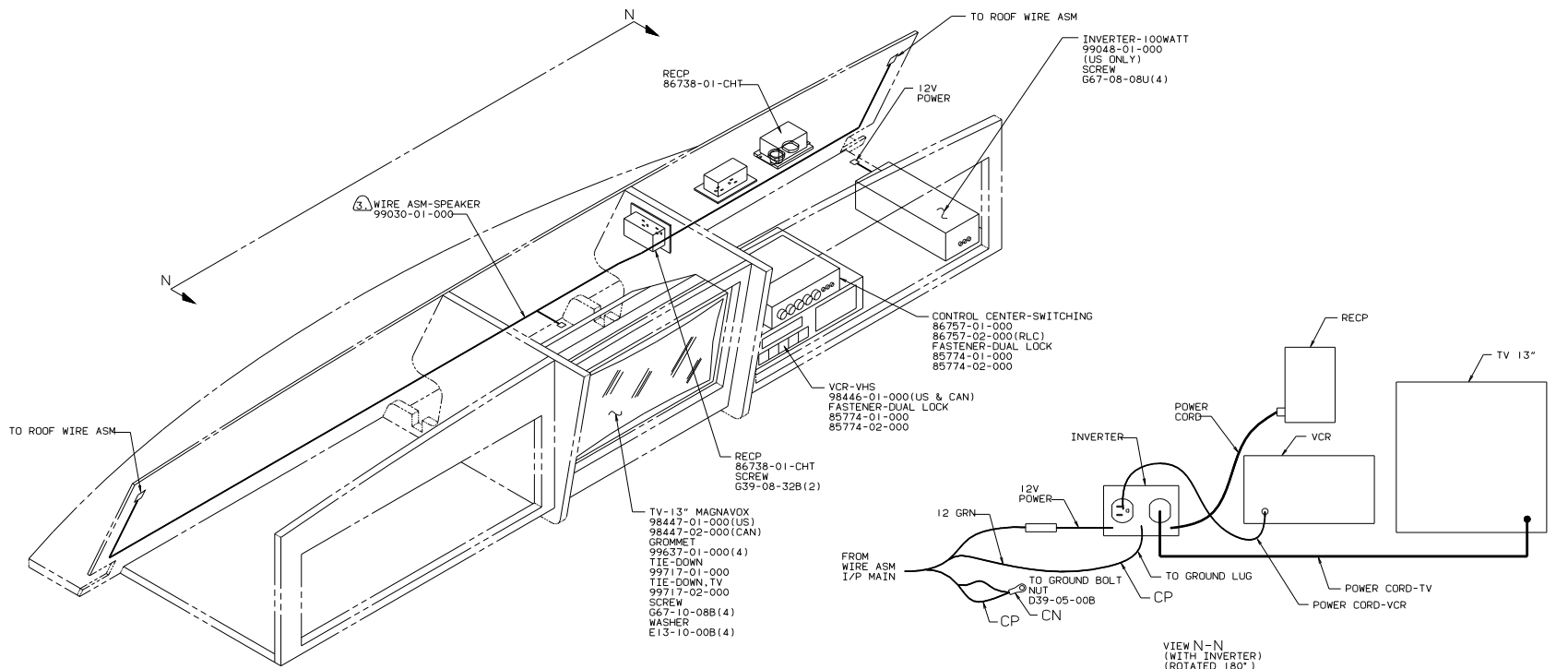
- ③ USE WITH TV ANTENNA AND TELEVISION.
- ② CABLE ASM MARKED WITH COLOR TAPE AS INDICATED.
- ① USE WITH TV ANTENNA.



OVERHEAD CABINET (ANT/TV/VCR) (MAGNAVOX TV) (MAGNAVOX VCR) (CHANNEL MASTER SWITCHER)

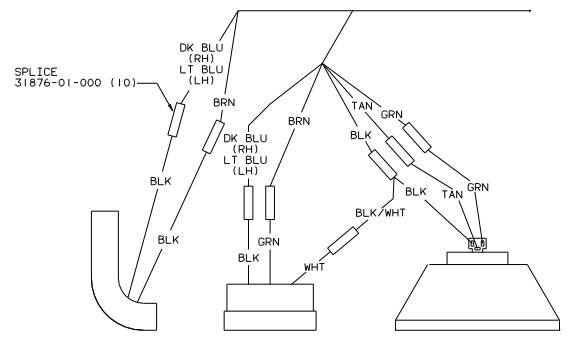
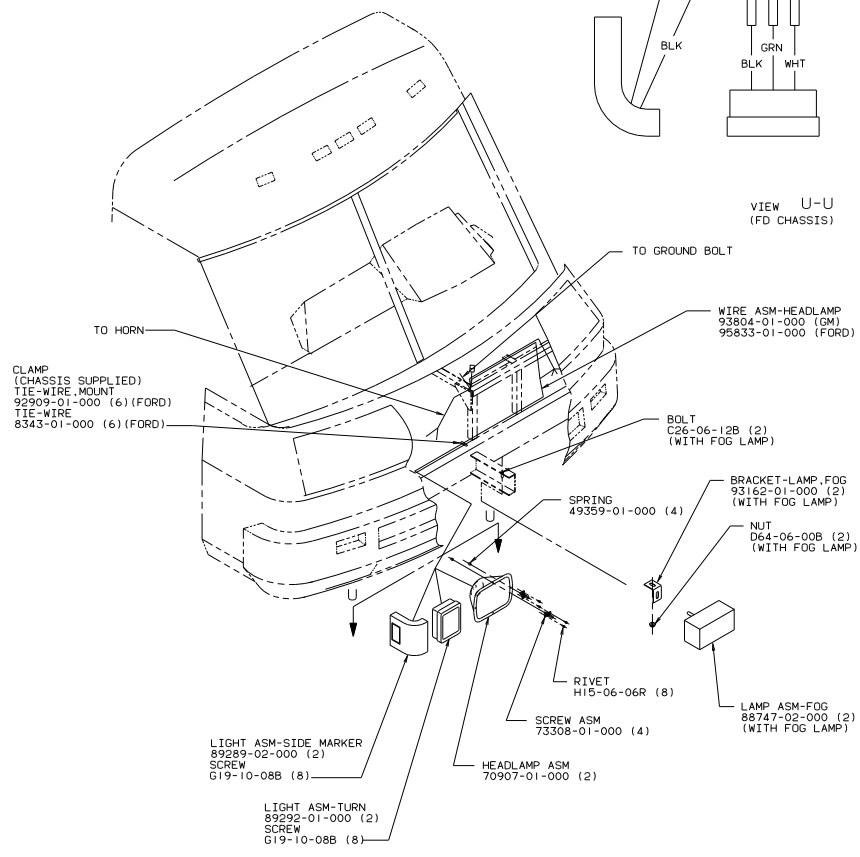
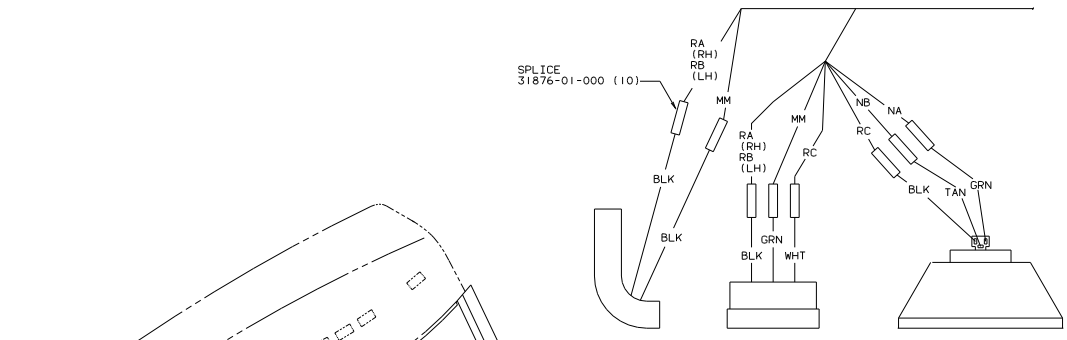
⚠ CABLE ASM MARKED WITH COLOR TAPE AS INDICATED.

TITLE:	WIRING INSTL-FRONT END
30 MIL SCALE DRAWING	SIZE 11x17
SHEET 14 OF 17	FILE NO 97416



OVERHEAD CABINET (ANT/TV/VCR) (MAGNAVOX TV) (MAGNAVOX VCR) (XANTECH SWITCHER)

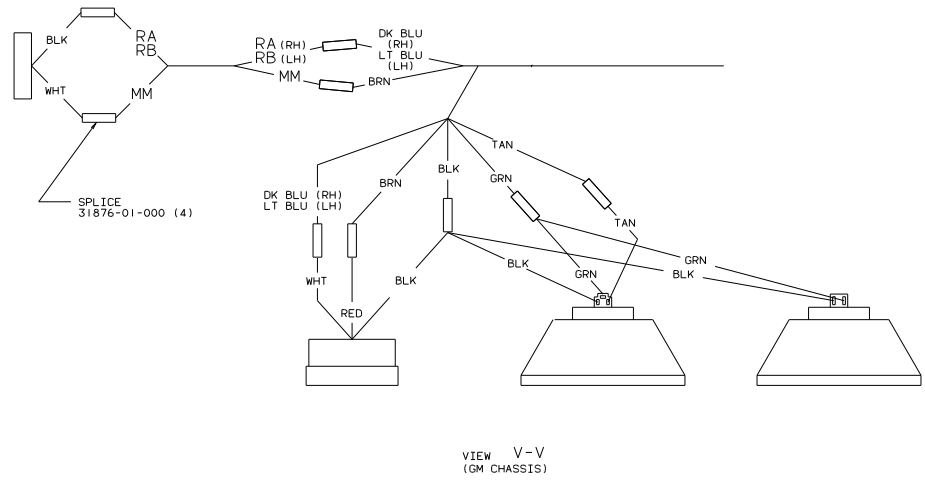
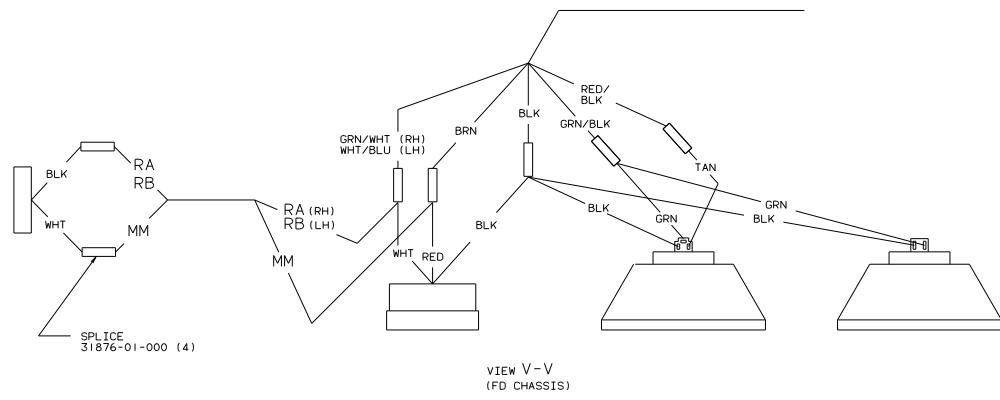
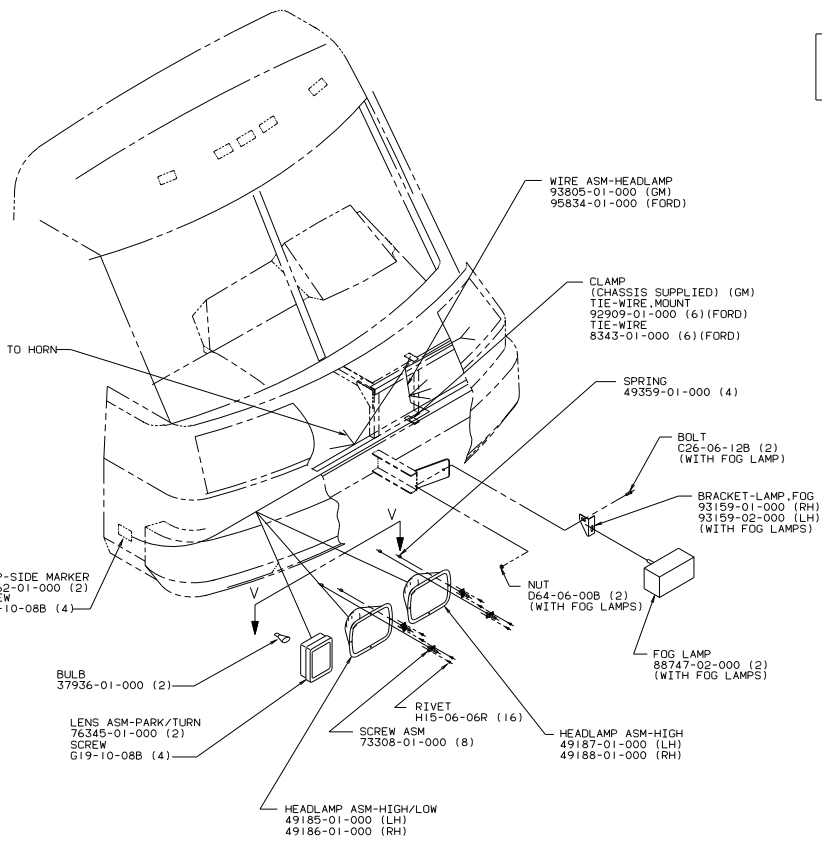
NOTE: CABLE ASM MARKED WITH COLOR TAPE AS INDICATED.



HEADLAMPS
WINNEBAGO

N-BODY

TITLE: WIRING INSTL-FRONT END	
30 MIL SCALE DRAWING	SIZE 11x14
SHEET 16 OF 17	DATE 11/01/01



HEADLAMPS
ITASCA

N-BODY

TITLE: WIRING INSTL-FRONT END	
30 NET SCALE (Drawing)	1 of 17
SHEET 17 of 17	97416