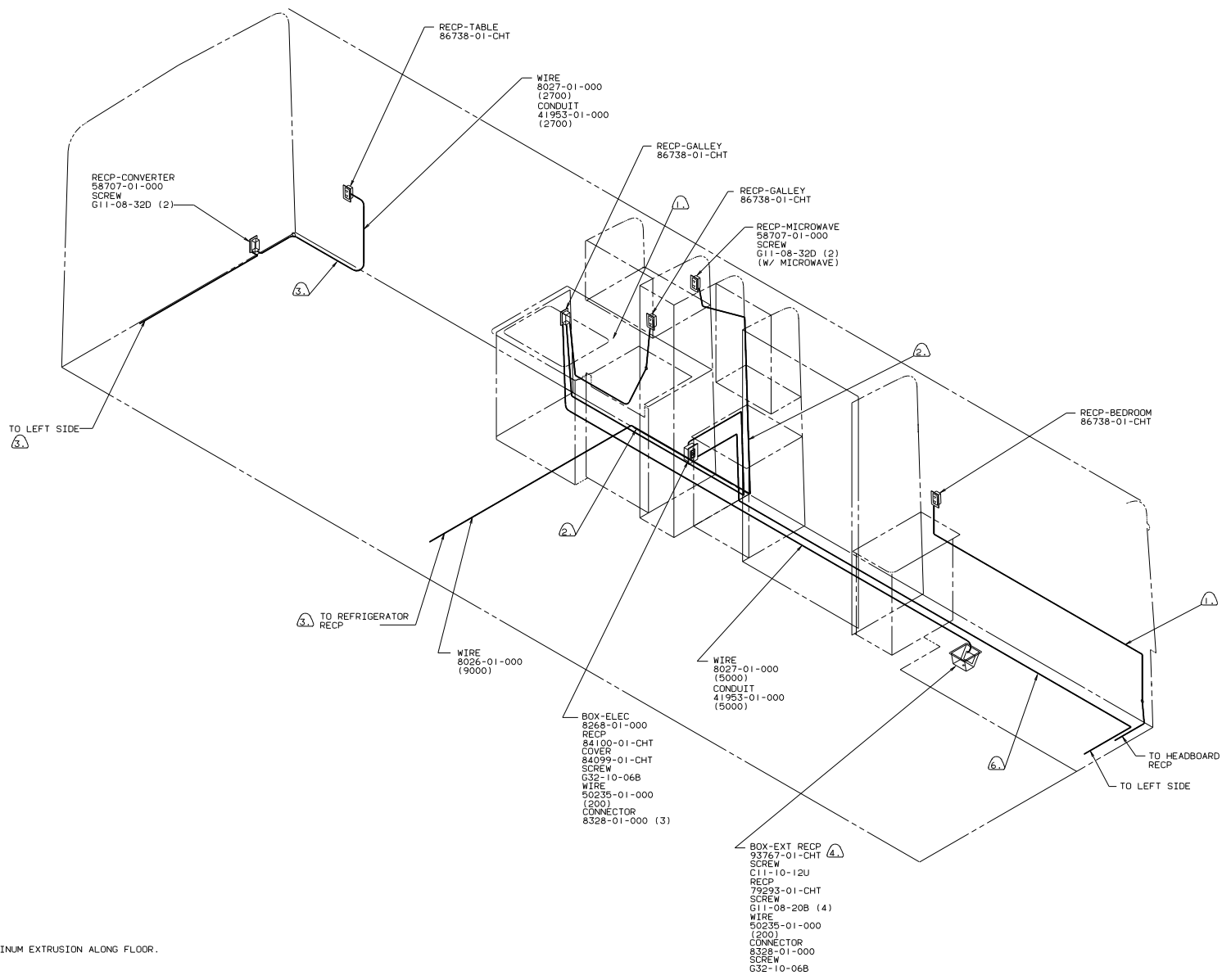


- (18) USE WITH REFRIGERATOR WITH ICE MAKER ONLY.
- (17) LOCATE RECIP 350 ABOVE SHELF.
- (16) USE WITH CENTRAL VACUUM CLEANER.
- (15) WIRES ROUTED IN ALUMINUM EXTRUSION ALONG FLOOR.
- (14) WIRES GO THRU SLOT IN BACKWALL.
- 13. ALL DIMENSIONS FROM DATUM UNLESS OTHERWISE SPECIFIED.
- (12) COVER WITH CONDUIT 41953-01-000 IN THIS AREA.
- (11) SEAL WITH BEDDING COMPOUND 69639-01-000.
- (10) WIRE IN SIDEWALL.
- (9) WIRE IN ROOF.
- (8) USED WITH 6.5 EXCHANGE.
- (7) USE WITHOUT ROOF AIR CONDITIONER.
- (6) WIRE ROUTED IN FLOOR.
- (5) INSTALL RECEPTACLE WITH GROUND TOWARD FLOOR OF VEHICLE.
- (4) USE WITH GENERATOR.
- 3. ALL GROUND WIRES TO BE COVERED WITH TUBING 8041-02-000.
- 2. ALL WIRES ARE TO BE CLAMPED WITH CLAMP 10497-05-000 WITHIN 200 OF OUTLET BOXES. USE SCREW G67-10-12B.
- 1. ALL WIRE TO BE CLAMPED WITH CLAMP 10495-01-000 OR CLIP 80734-01-000 EVERY 700. USE SCREW G67-10-12B UNLESS OTHERWISE SPECIFIED.

WINNEBAGO		90 W/1CN36R0
DATE	UNSPECIFIED TOLERANCES ARE:	MATERIAL
DRW	WHOLE DIM (IN)	
FILE	ONE-PLACE (IN.X)	
FILE	TWO-PLACE (IN.XXX)	
FILE	ANGLE	
FILE	THIRD ANGLE PROJECTION	
CONTR		
LANP# N36R09	TITLE: WIRING INSTL-BODY	97333
REV #	SCALE: NONE	DO NOT SCALE DIMENSIONS
ALL DIMENSIONS ARE IN MILLIMETERS	SHEET 1 OF 13	FILE 1E 1

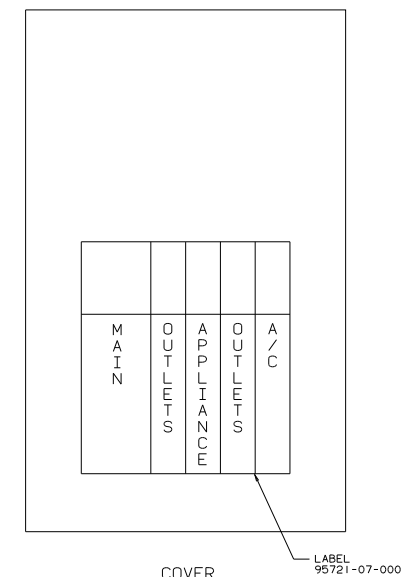
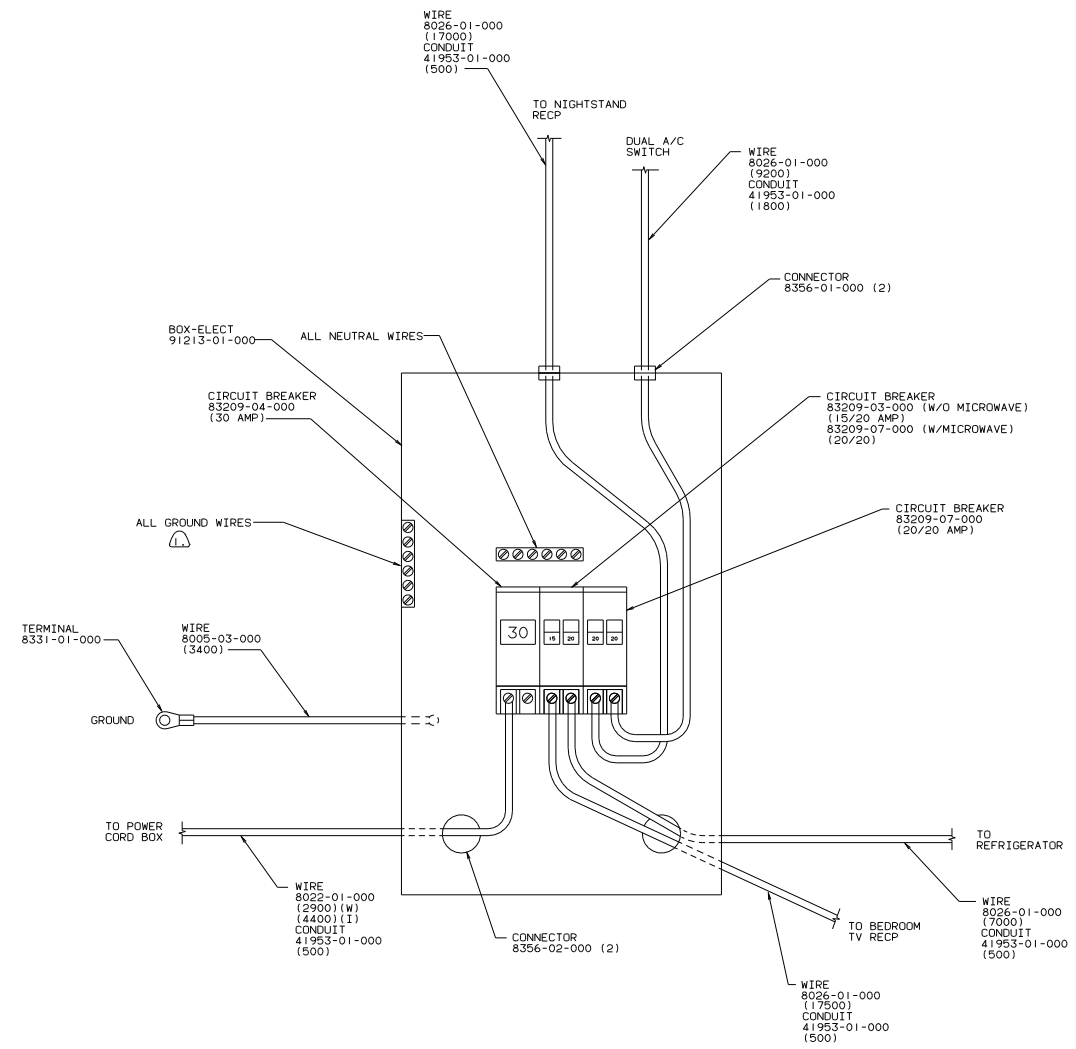


- ⑥ WIRE ROUTED IN ALUMINUM EXTRUSION ALONG FLOOR.
- ⑤ WIRING IN ROOF.
- ④ SEAL WITH BEDDING COMPOUND 89639-01-000.
- ③ WIRE ROUTED IN FLOOR.
- ② COVER WITH CONDUIT 41953-01-000 IN THIS AREA.
- ① WIRE IN SIDEWALL.

NOTE:

RIGHT SIDE
110V (US)
90 W/ICN36R0

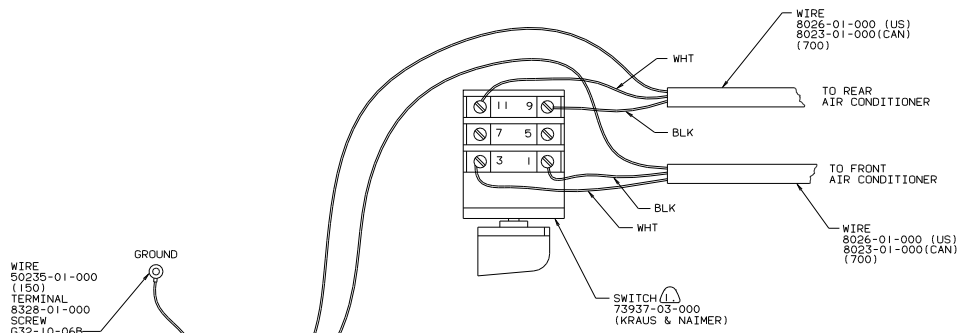
TITLE: WIRING INSTL-BODY	
30 NET SCALE DRAWING	FILE NO
SHEET 2 OF 13	97333



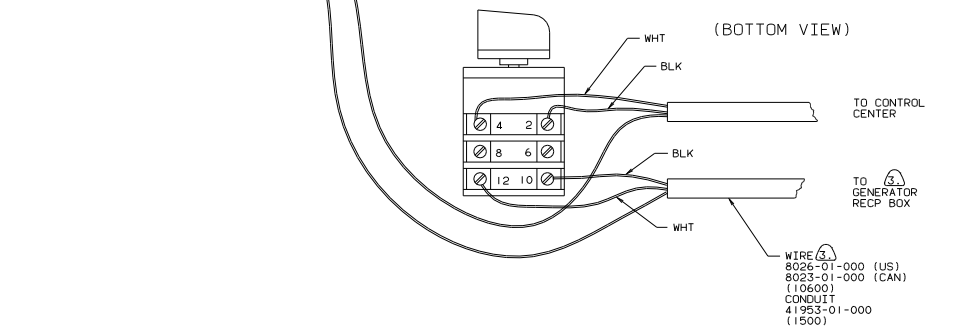
- NOTES:
- ② USE WITH CENTRAL VACUUM CLEANER.
 - ① ALL GROUND WIRES TO BE COVERED WITH TUBING 8041-02-000.

CONTROL CENTER (US)
90 W/ICN36RD

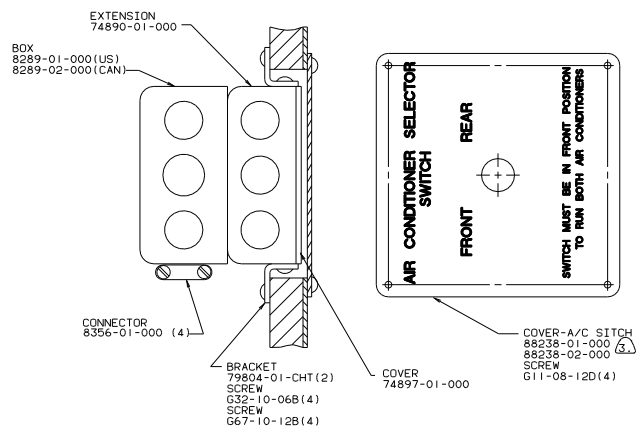
TITLE: WIRING INSTL-BODY	
30 NET SCALE DRAWING	FILE NO
SHEET 3 OF 13	97333



(TOP VIEW)



(BOTTOM VIEW)

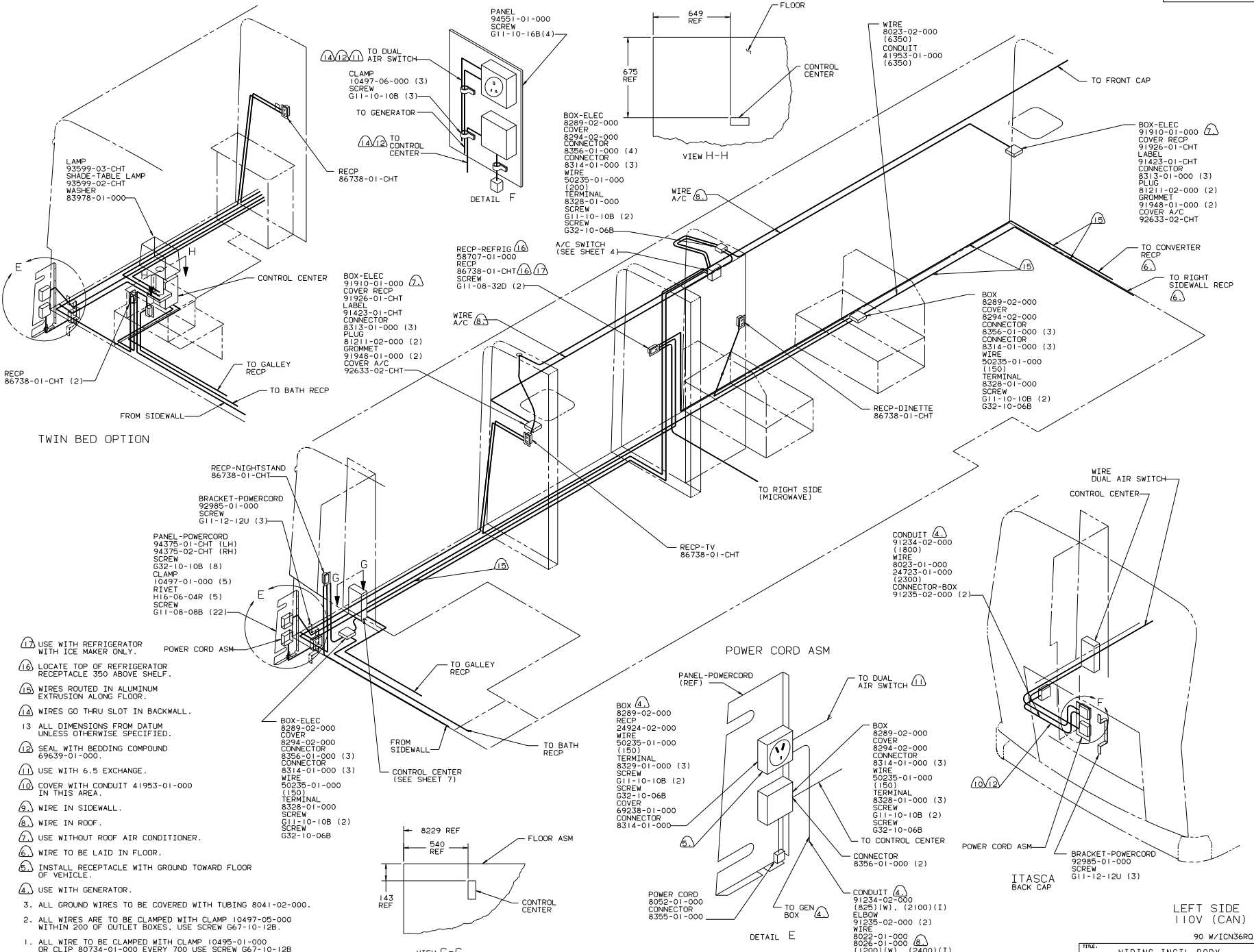


TOP VIEW OF BOX

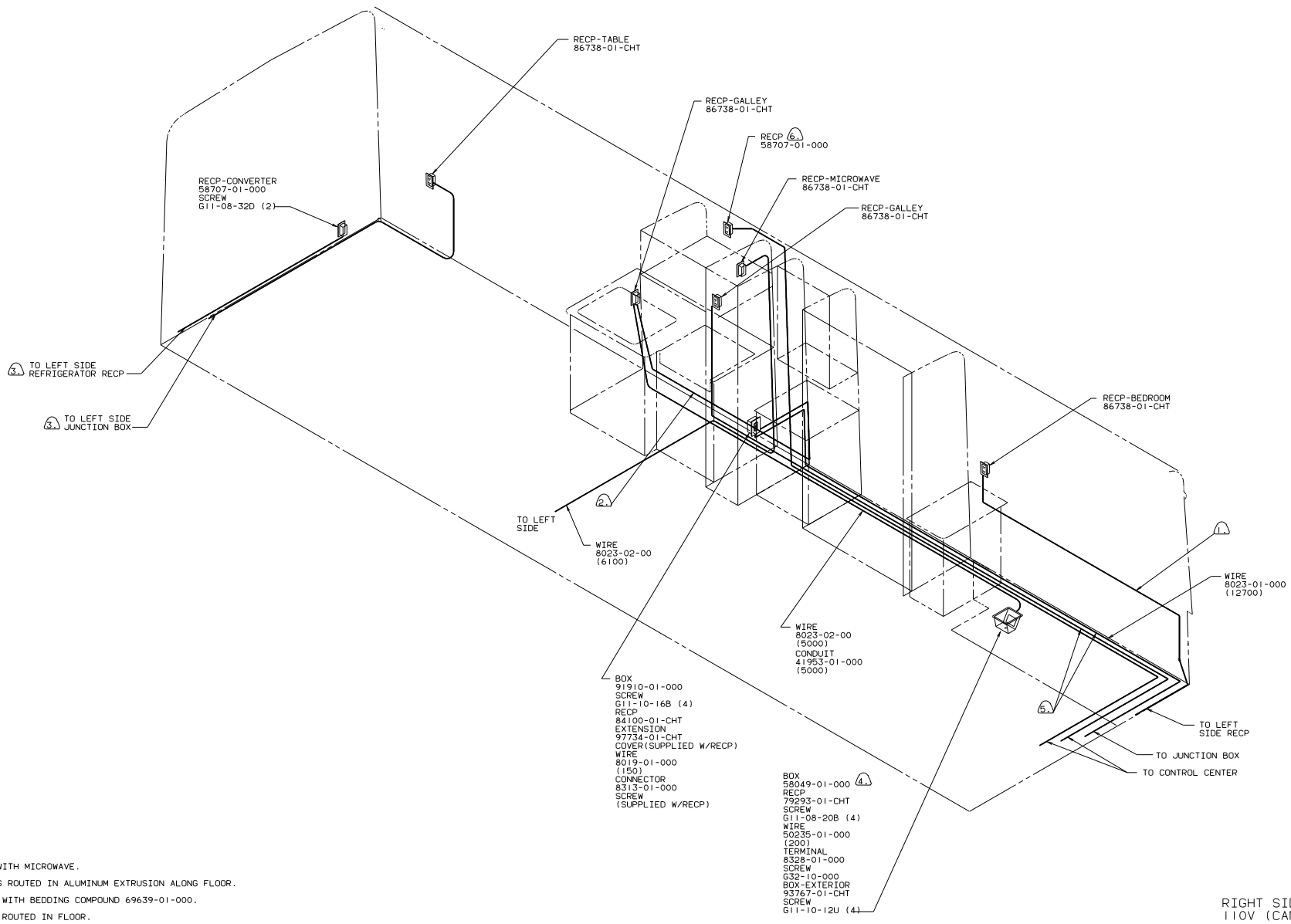
- NOTES:
- ③ USE WITH 6500 WATT GENERATOR OF LARGER.
 - ② ALL GROUND WIRES TO BE COVERED WITH TUBING 8041-02-000.
 - ① FASTEN SWITCH TO COVER 74897-01-000 BEFORE FASTENING COVER TO BOX.

DUAL AIR SWITCH
110 V (US/CAN)
90 W/ICN36RQ

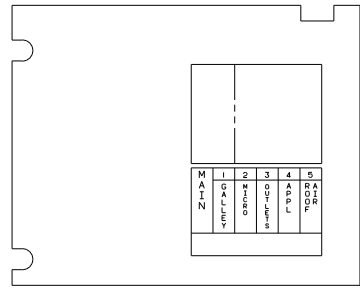
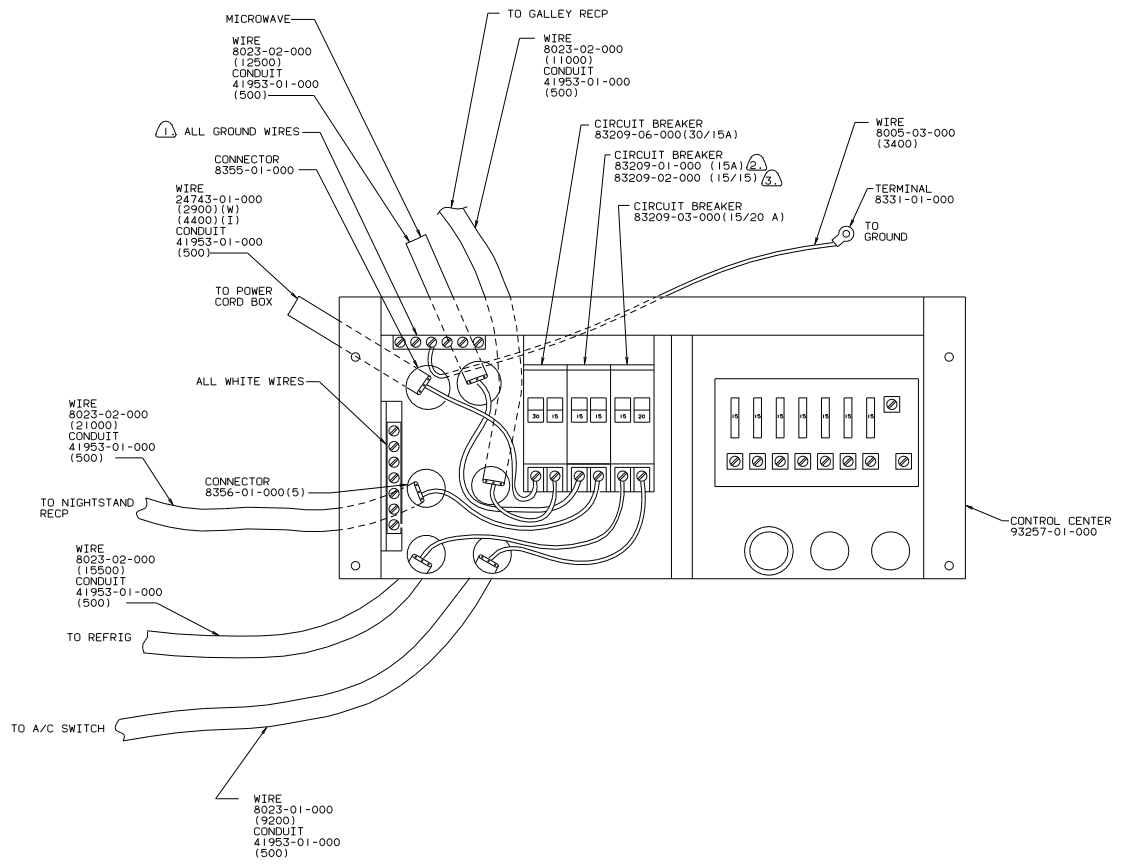
TITLE		WIRING INSTL BODY (US)	
DO NOT SCALE DRAWING	SHEET	OF	13
	4		13
		DES	97333



- 17. USE WITH REFRIGERATOR WITH ICE MAKER ONLY.
 - 16. LOCATE TOP OF REFRIGERATOR RECEPTACLE 350 ABOVE SHELF.
 - 15. WIRES ROUTED IN ALUMINUM EXTRUSION ALONG FLOOR.
 - 14. WIRES GO THRU SLOT IN BACKWALL.
 - 13. ALL DIMENSIONS FROM DATUM UNLESS OTHERWISE SPECIFIED.
 - 12. SEAL WITH BEDDING COMPOUND 69639-01-000.
 - 11. USE WITH 6.5 EXCHANGE.
 - 10. COVER WITH CONDUIT 41953-01-000 IN THIS AREA.
 - 9. WIRE IN SIDEWALL.
 - 8. WIRE IN ROOF.
 - 7. USE WITHOUT ROOF AIR CONDITIONER.
 - 6. WIRE TO BE LAID IN FLOOR.
 - 5. INSTALL RECEPTACLE WITH GROUND TOWARD FLOOR OF VEHICLE.
 - 4. USE WITH GENERATOR.
3. ALL GROUND WIRES TO BE COVERED WITH TUBING 8041-02-000.
 2. ALL WIRES ARE TO BE CLAMPED WITH CLAMP 10497-05-000 WITHIN 200 OF OUTLET BOXES. USE SCREW G67-10-12B.
 1. ALL WIRE TO BE CLAMPED WITH CLAMP 10495-01-000 OR CLIP 80734-01-000 EVERY 700 USE SCREW G67-10-12B UNLESS OTHERWISE SPECIFIED.



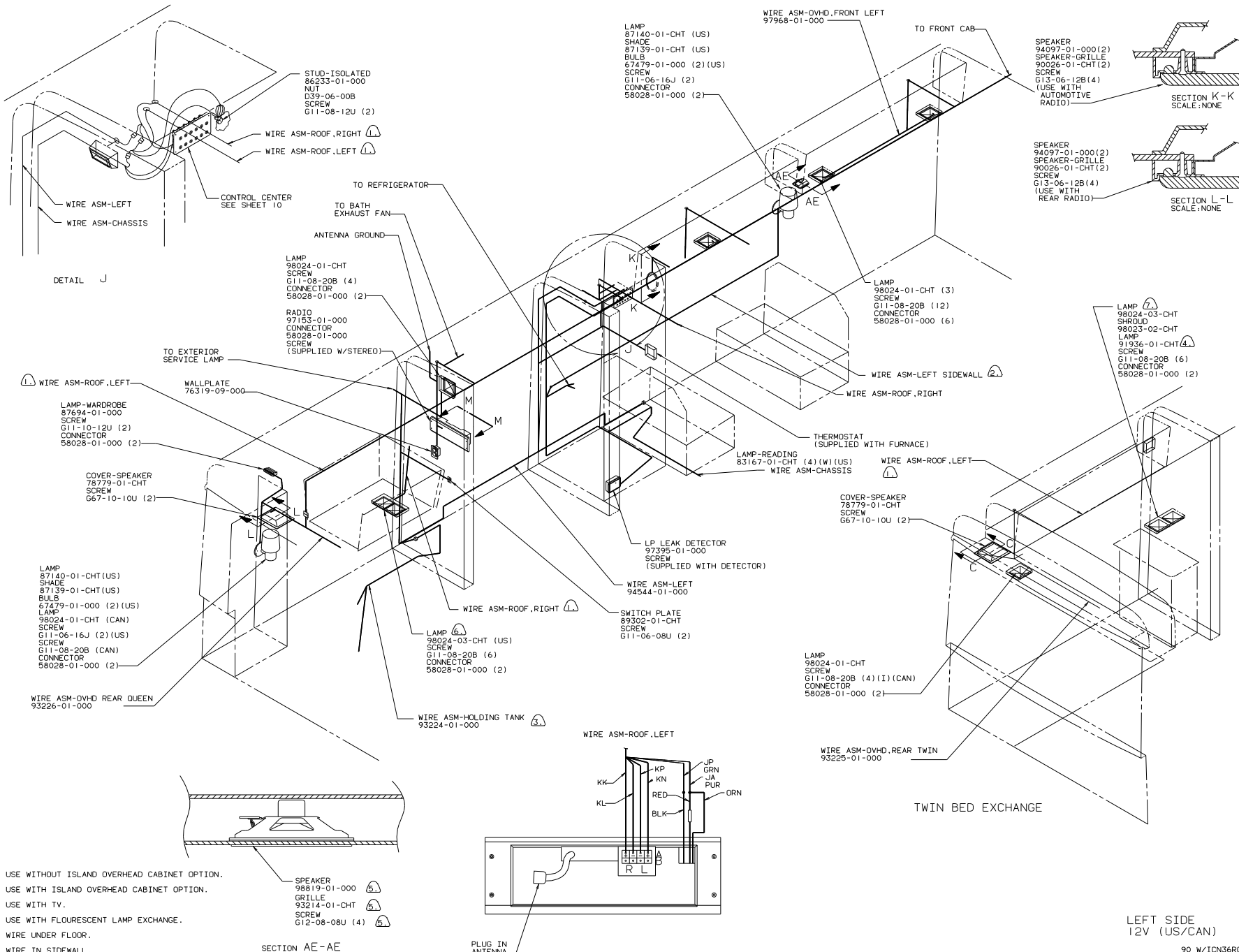
- ④ USE WITH MICROWAVE.
- ⑤ WIRES ROUTED IN ALUMINUM EXTRUSION ALONG FLOOR.
- ④ SEAL WITH BEDDING COMPOUND 69639-01-000.
- ③ WIRE ROUTED IN FLOOR.
- ② COVER WITH CONDUIT 41953-01-000 IN THIS AREA.
- ① WIRE IN SIDEWALL.



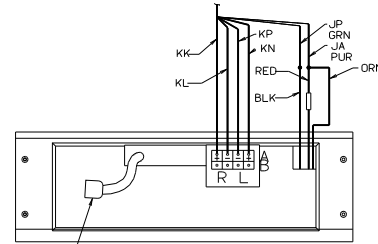
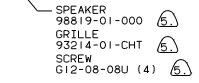
- NOTES:
- ③ WITH MICROWAVE.
 - ② WITHOUT MICROWAVE.
 - ① ALL GROUND WIRES TO BE COVERED WITH TUBING 8041-02-000.

CONTROL CENTER (CAN)
90 W/1CN36RD

TITLE		DRAWING		DATE	
WIRING INSTL-BODY		97333		1/1	
SHEET 7 OF 13		1/1		97333	



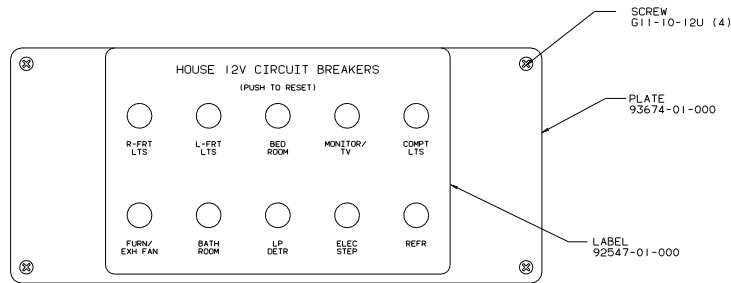
- (7) USE WITHOUT ISLAND OVERHEAD CABINET OPTION.
- (6) USE WITH ISLAND OVERHEAD CABINET OPTION.
- (5) USE WITH TV.
- (4) USE WITH FLOURESCENT LAMP EXCHANGE.
- (3) WIRE UNDER FLOOR.
- (2) WIRE IN SIDEWALL.
- (1) WIRE IN ROOF.



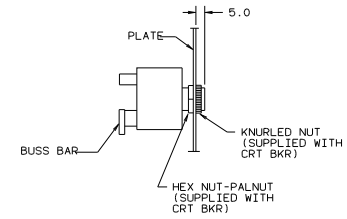
LEFT SIDE
12V (US/CAN)

90 W/1CN36R0

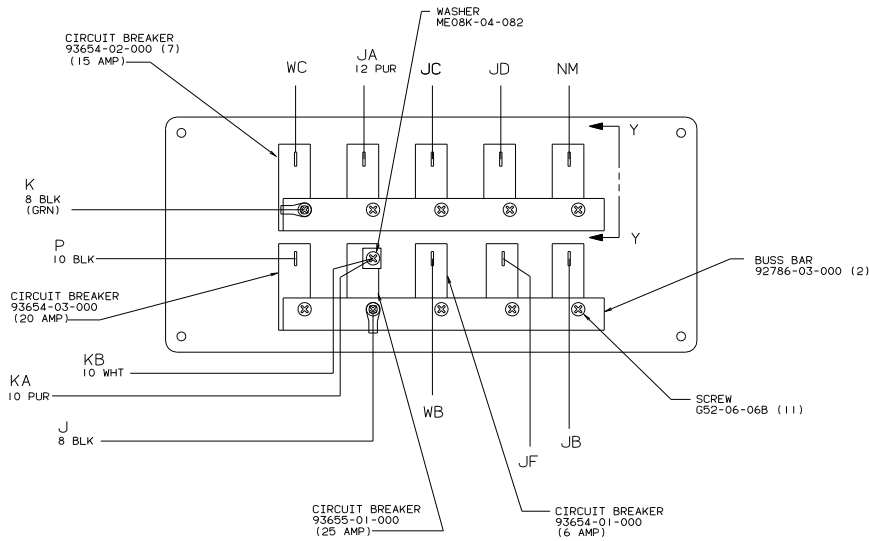
TITLE: WIRING INSTL-BODY	
DO NOT SCALE DRAWING	SIZE: 11x17
SHEET 8 OF 13	DWG NO 97333



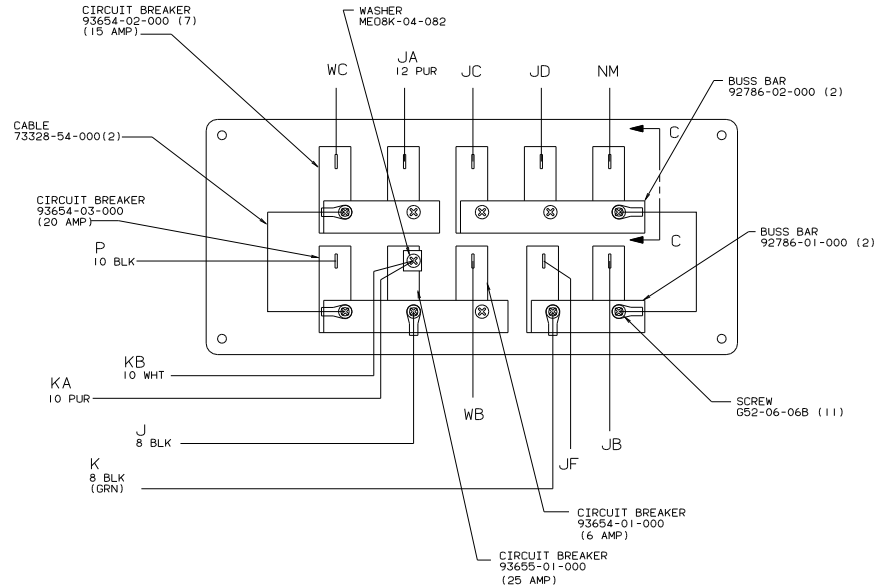
CIRCUIT BREAKER (FRONT VIEW)



SECTION Y-Y



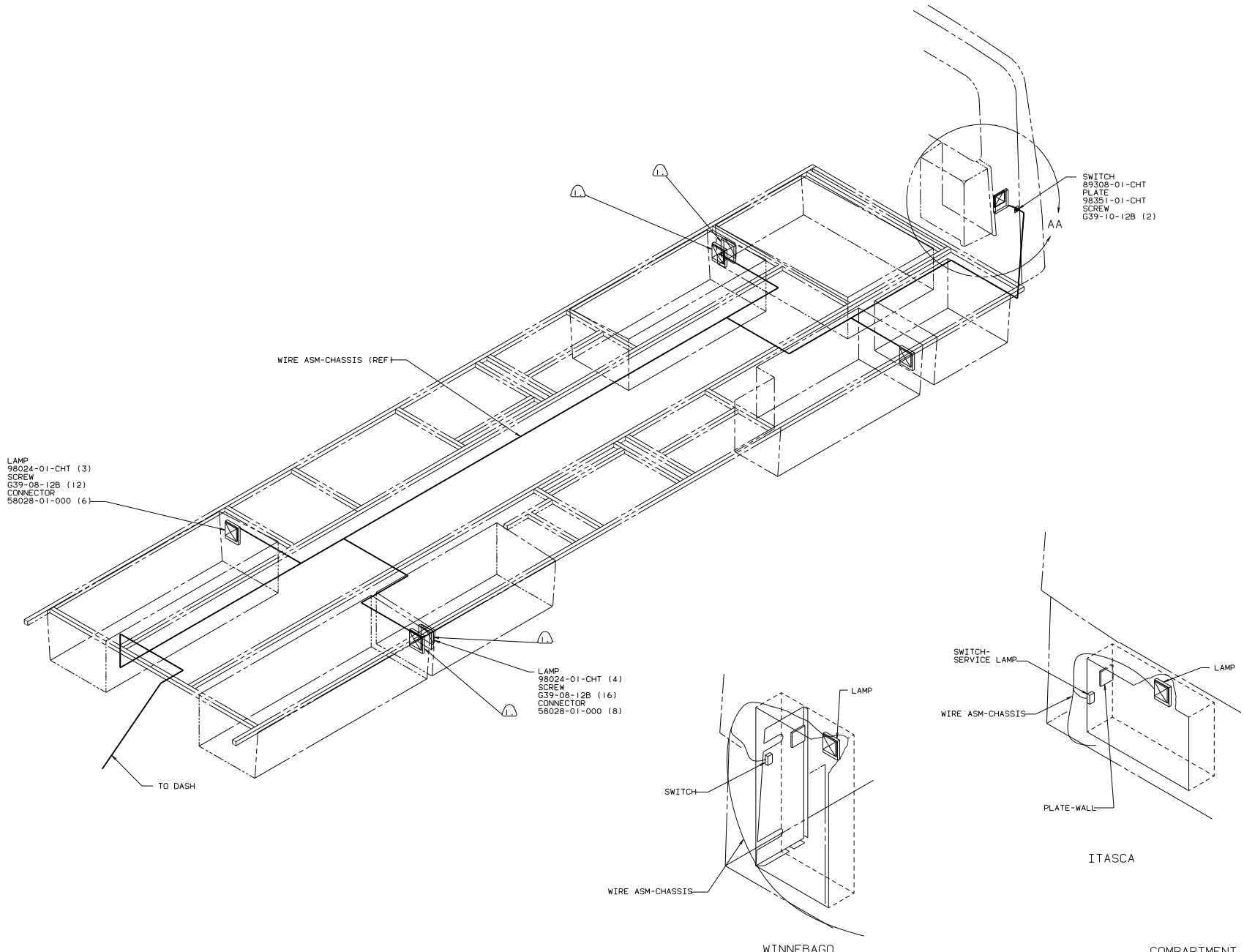
CIRCUIT BREAKER (W) (BACK VIEW)



CIRCUIT BREAKER (I) (BACK VIEW)

12V CONTROL CENTER
90 W/ICN36RQ

TITLE: WIRING INSTL-BODY	
30 NET SCALE DRAWING	FILE NO 97333
SHEET 10 OF 13	1 E



LAMP
98024-01-CHT (3)
SCREW
G39-08-12B (12)
CONNECTOR
58028-01-000 (6)

WIRE ASM-CHASSIS (REF)

LAMP
98024-01-CHT (4)
SCREW
G39-08-12B (16)
CONNECTOR
58028-01-000 (8)

SWITCH
89308-01-CHT
PLATE
98351-01-CHT
SCREW
G39-10-12B (2)

TO DASH

LAMP
SWITCH

SWITCH-SERVICE LAMP
LAMP
WIRE ASM-CHASSIS
PLATE-WALL

WINNEBAGO

ITASCA

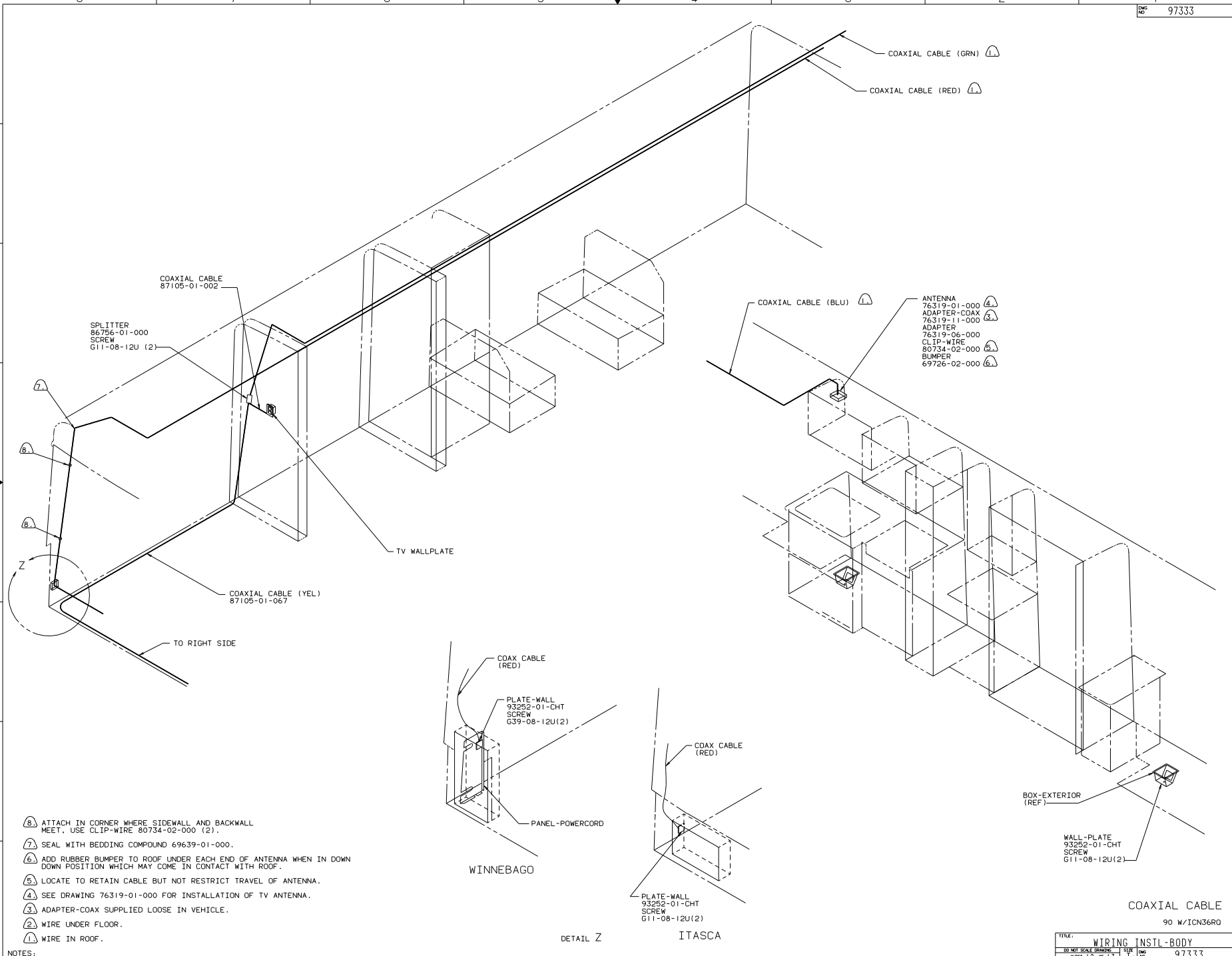
VIEW AA
(ROTATED 180°)

COMPARTMENT LAMPS
(US/CAN)
90 W/ICN36R0

USE WITH WINNEBAGO

NOTES:

TITLE: WIRING INSTL-BODY	
30 NET SCALE DRAWING	FILE NO: 97333
SHEET 11 OF 13	1 E



COAXIAL CABLE
87105-01-002

SPLITTER
86796-01-000
SCREW
G11-08-12U (2)

COAXIAL CABLE (GRN)

COAXIAL CABLE (RED)

COAXIAL CABLE (BLU)

ANTENNA
76319-01-000
ADAPTER-COAX
76319-11-000
ADAPTER
76319-06-000
CLIP-WIRE
80734-02-000
BUMPER
69726-02-000

COAXIAL CABLE (YEL)
87105-01-067

TO RIGHT SIDE

TV WALLPLATE

COAX CABLE (RED)

PLATE-WALL
93252-01-CHT
SCREW
G39-08-12U(2)

WINNEBAGO

COAX CABLE (RED)

PLATE-WALL
93252-01-CHT
SCREW
G11-08-12U(2)

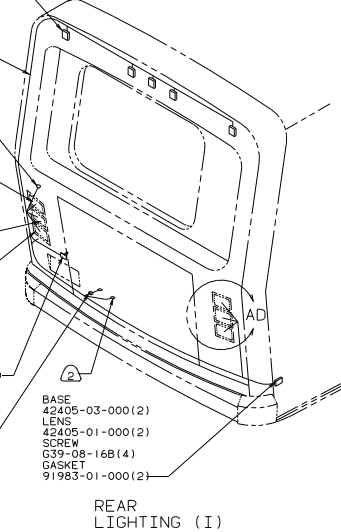
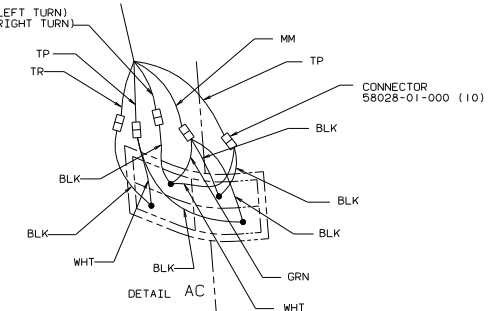
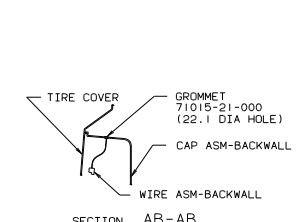
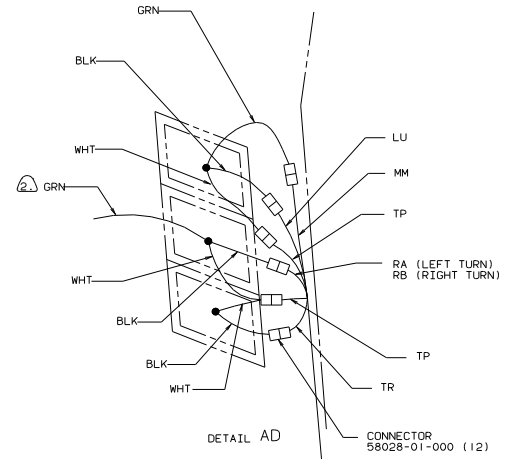
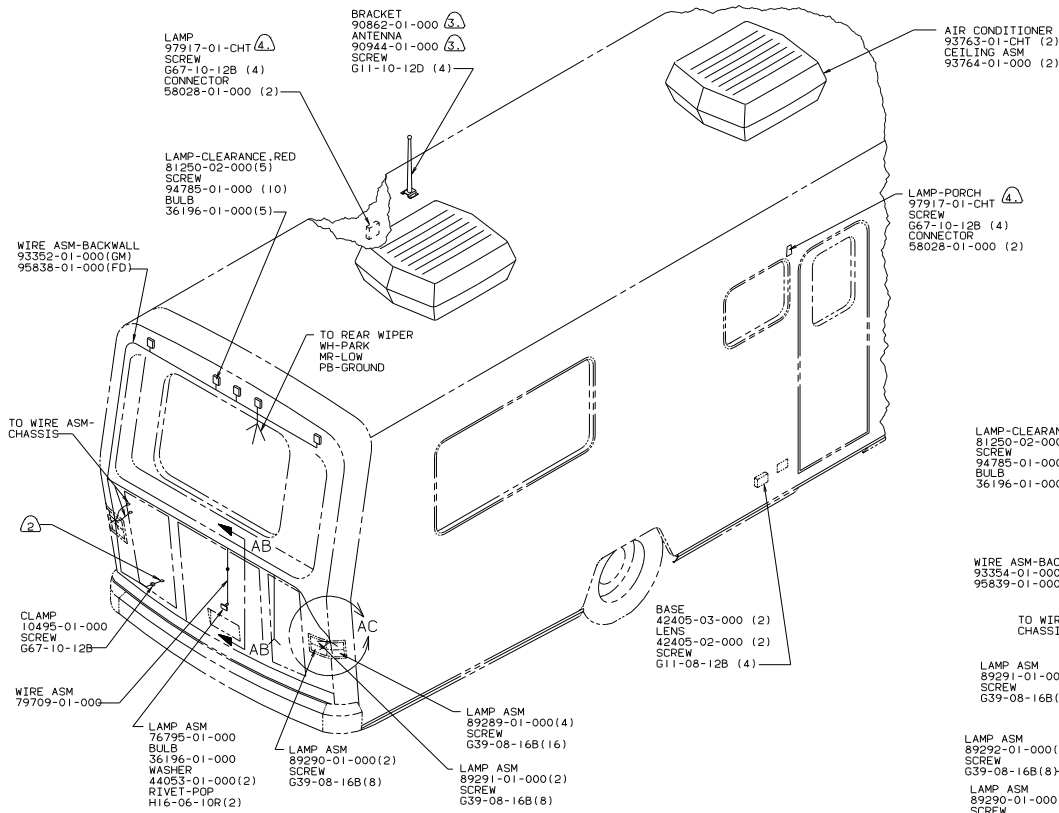
ITASCA

BOX-EXTERIOR (REF)

WALL-PLATE
93252-01-CHT
SCREW
G11-08-12U(2)

COAXIAL CABLE
90 W/ICN36RD

- ⑧ ATTACH IN CORNER WHERE SIDEWALL AND BACKWALL MEET. USE CLIP-WIRE 80734-02-000 (2).
- ⑦ SEAL WITH BEDDING COMPOUND 69639-01-000.
- ⑥ ADD RUBBER BUMPER TO ROOF UNDER EACH END OF ANTENNA WHEN IN DOWN POSITION WHICH MAY COME IN CONTACT WITH ROOF.
- ⑤ LOCATE TO RETAIN CABLE BUT NOT RESTRICT TRAVEL OF ANTENNA.
- ④ SEE DRAWING 76319-01-000 FOR INSTALLATION OF TV ANTENNA.
- ③ ADAPTER-COAX SUPPLIED LOOSE IN VEHICLE.
- ② WIRE UNDER FLOOR.
- ① WIRE IN ROOF.



- 4 SEAL WITH SEALER RIBBON.
 3 USE WITH REAR STEREO.
 2 TAPE BRANCH BACK ALONG WIRE ASM WITH TAPE 8363-01-000.
 1. WIRE ASM-TRAILER LAMPS 91300-02-000 TO BE SUPPLIED LOOSE IN COACH WITH TRAILER TOW PACKAGE.

TITLE: WIRING INSTL-BODY	
30 NET SCALE DRAWING	FILE NO 97333
SHEET 13 OF 13	1 E