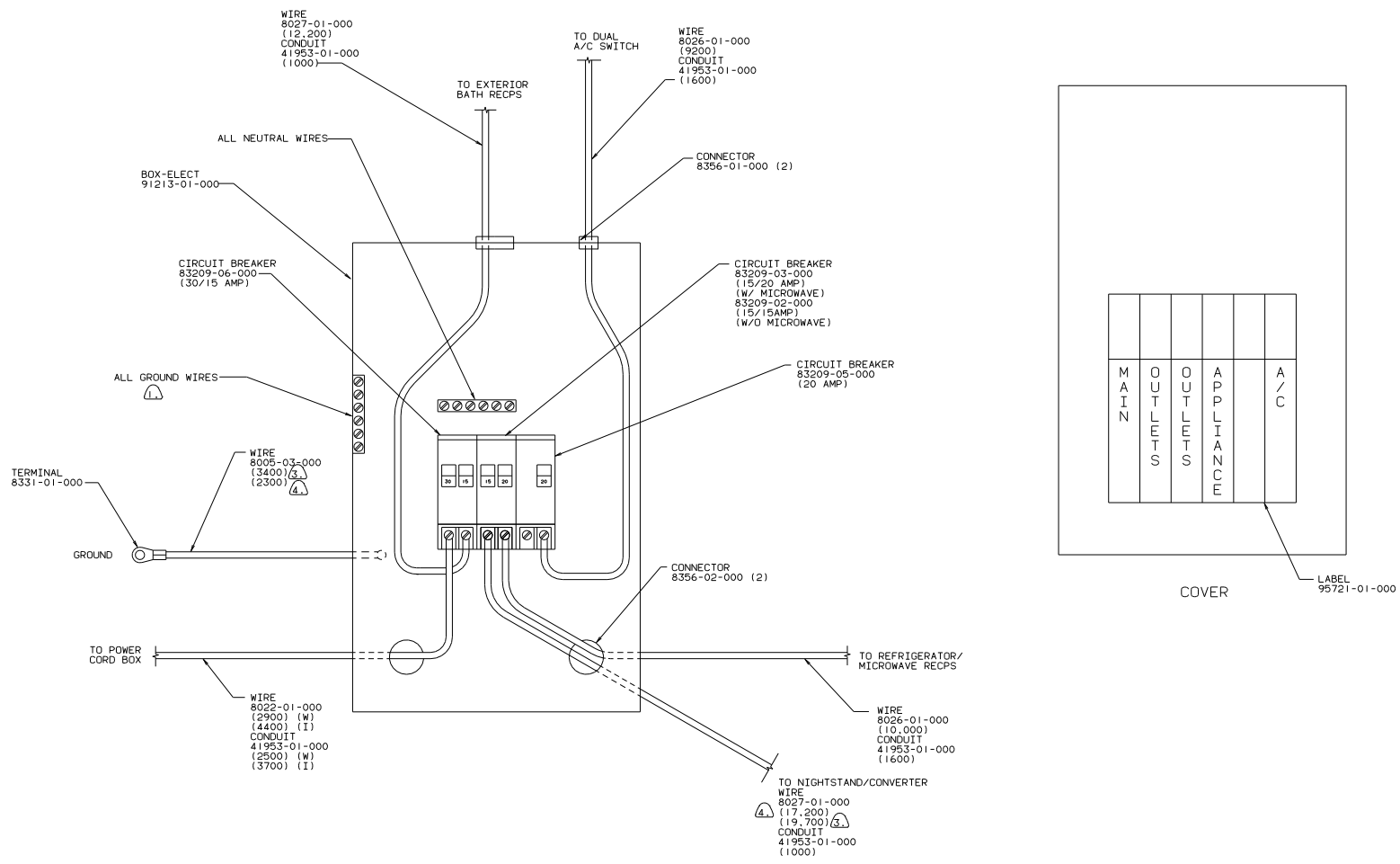


- ⑤ WIRE ROUTED IN ALUMINUM EXTRUSION ALONG FLOOR.
- ④ SEAL WITH BEDDING COMPOUND 69639-01-000.
- ③ WIRE ROUTED IN FLOOR.
- ② COVER WITH CONDUIT 41953-01-000 IN THIS AREA.
- ① WIRE IN SIDEWALL.

NOTES:

RIGHT SIDE  
110V (US)  
90 W/ICN3390

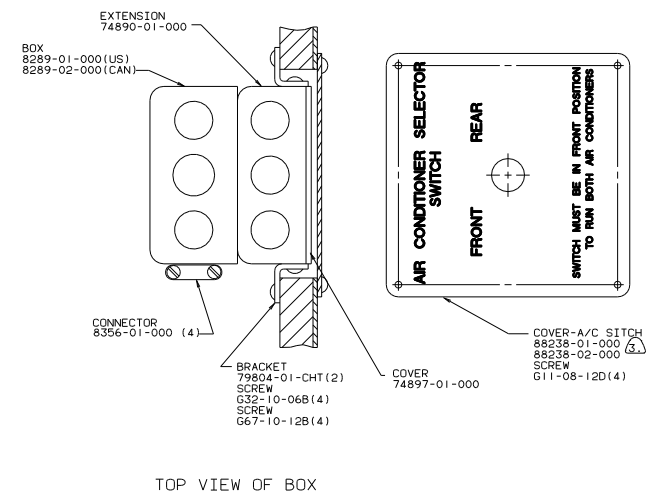
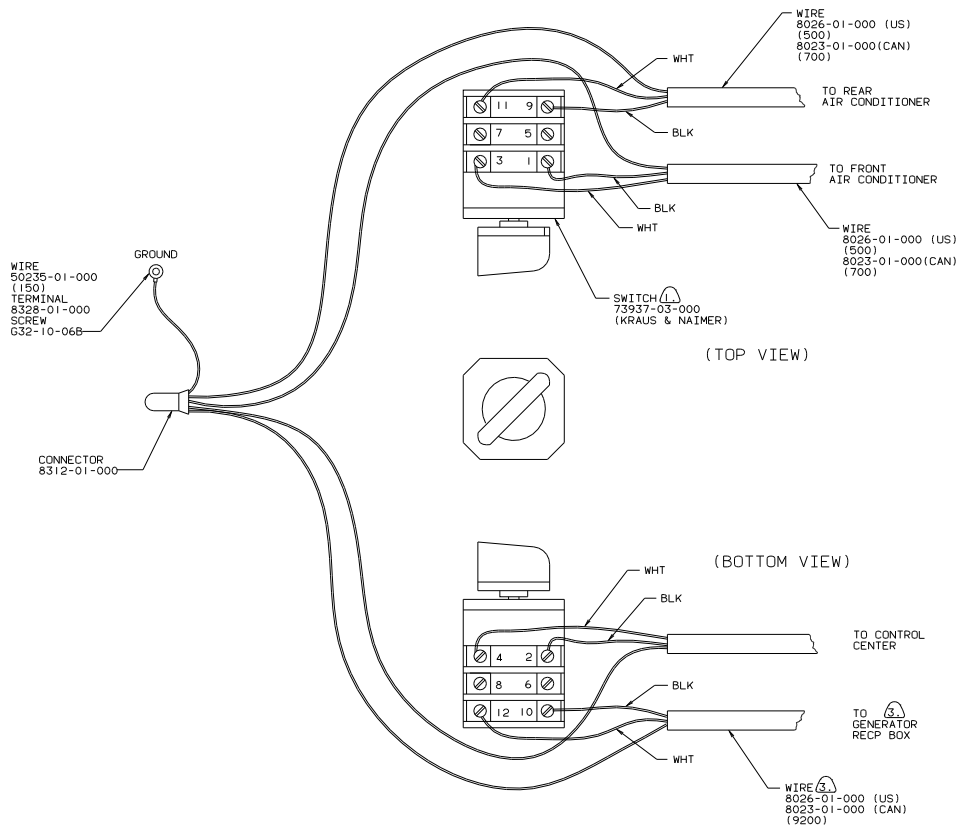
TITLE: WIRING INSTL-BODY	
30 NET SCALE DRAWING	FILE NO
SHEET 2 OF 13	97327



- ④ USE WITH QUEEN BED ONLY.
- ③ USE WITH TWIN BED ONLY.
- ② USE WITH CENTRAL VACUUM CLEANER SYSTEM.
- ① ALL GROUND WIRES TO BE COVERED WITH TUBING 8041-02-000.

CONTROL CENTER (US)  
90 W/ICN33RQ

30 NET SCALE DRAWING	FILE NO
SHEET 3 OF 13	97327



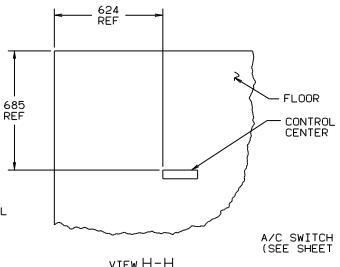
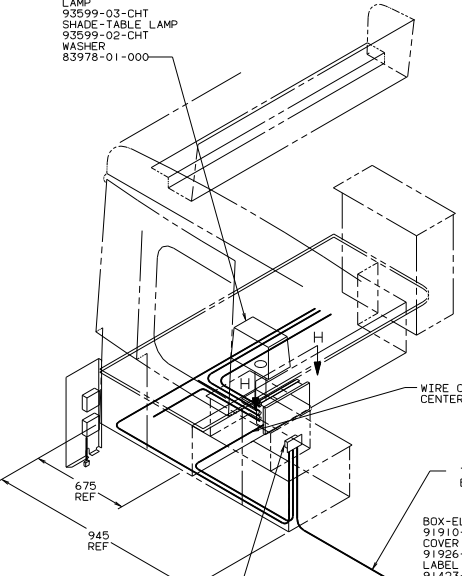
- NOTES:
- ③ USE WITH 6500 WATT GENERATOR OF LARGER.
  - ② ALL GROUND WIRES TO BE COVERED WITH TUBING 8041-02-000.
  - ① FASTEN SWITCH TO COVER 74897-01-000 BEFORE FASTENING COVER TO BOX.

DUAL AIR SWITCH  
110 V (US/CAN)

90 W/ICN339Q

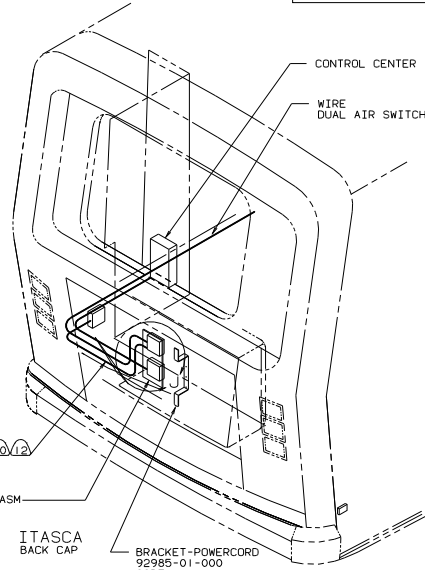
TITLE		DRAWING	
WIRING INSTALLATION-BODY (US)		110 V (US/CAN)	
DO NOT SCALE DRAWING	SHEET 4	OF 13	REV 1.0
		97327	

LAMP  
93599-03-CHT  
SHADE-TABLE LAMP  
93599-02-CHT  
WASHER  
83978-01-000



BOX-ELEC  
8289-02-000  
COVER  
8294-02-000  
CONNECTOR  
8356-01-000(4)  
CONNECTOR  
8314-01-000(3)  
WIRE  
50235-01-000  
(200)  
TERMINAL  
8328-01-000  
SCREW  
G11-10-10B(2)  
SCREW  
G32-10-06B

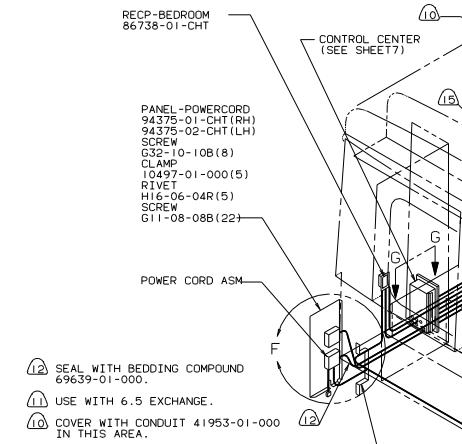
BOX-ELEC  
91910-01-000  
COVER RECP  
91926-01-CHT  
LABEL  
91423-01-CHT  
CONNECTOR  
8313-01-000(3)  
PLUG  
81211-02-000(2)  
GROMMET  
91948-01-000(2)  
COVER A/C  
92633-02-CHT



TWIN BED EXCHANGE

BOX-ELEC  
91910-01-000  
COVER  
91926-01-CHT  
LABEL  
91423-01-CHT  
CONNECTOR  
8313-01-000(3)  
PLUG  
81211-02-000(2)  
GROMMET  
91948-01-000(2)  
COVER A/C  
92633-02-CHT

RECP-REFRIGERATOR  
58707-01-000  
RECP  
86738-01-CHT(16)

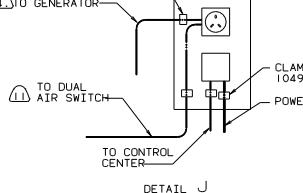


RECP-BEDROOM  
86738-01-CHT

RECP-BATH  
86738-01-CHT  
915 LOOP

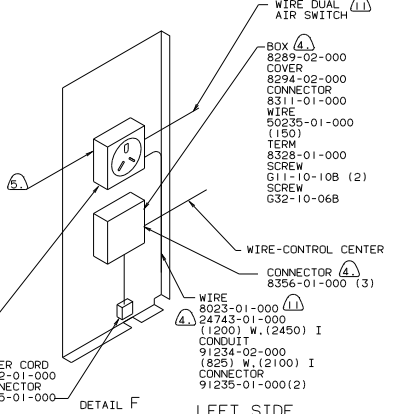
RECP-BEDROOM-TV  
86738-01-CHT  
1830 LOOP

RECP-GALLEY  
86738-01-CHT



PANEL  
94551-01-000  
SCREW  
G11-10-16B(4)

POWER CORD ASM

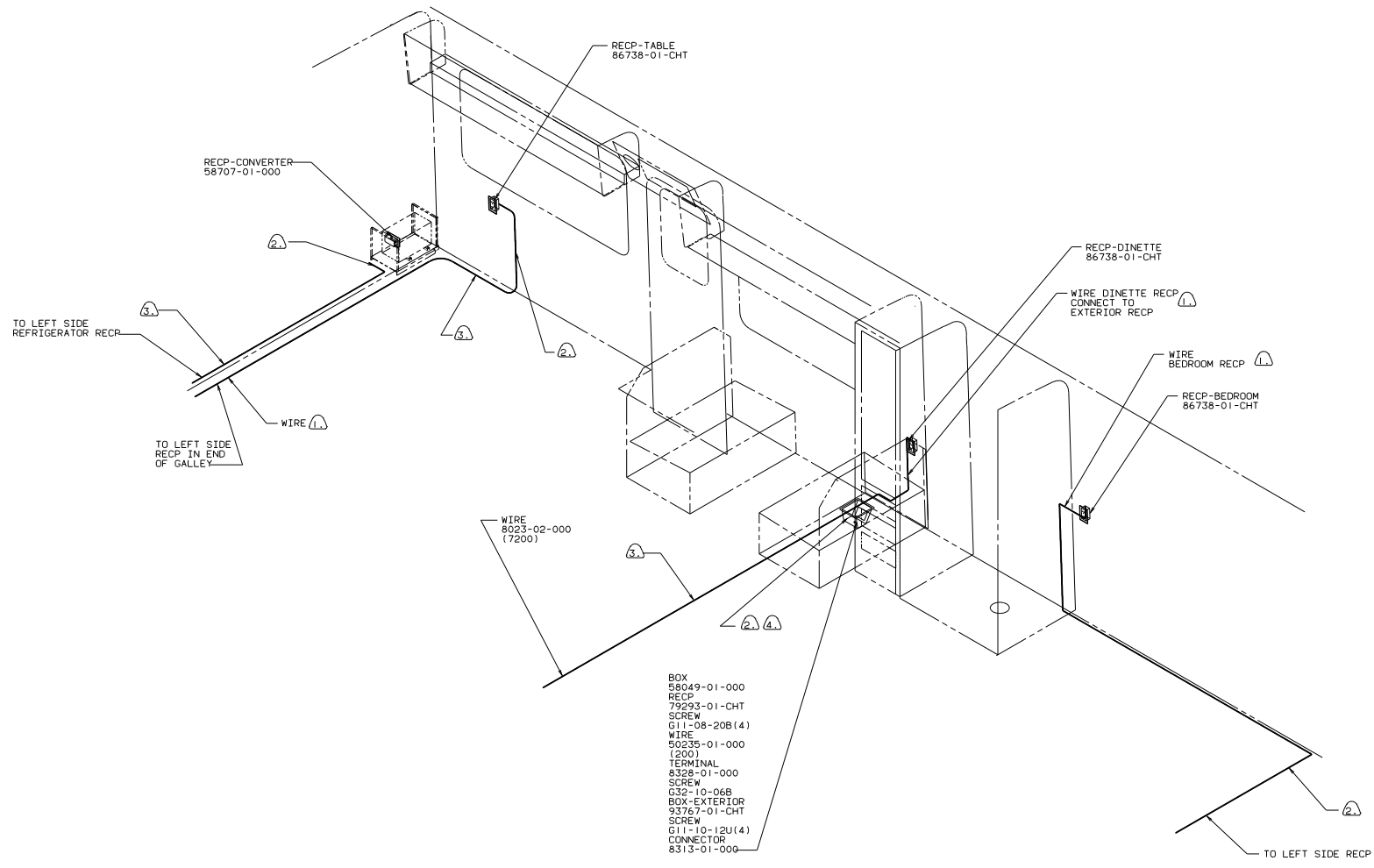


BOX  
8289-02-000  
RECP  
24924-02-000  
WIRE  
50235-01-000 (2)  
TERM  
8329-01-000  
SCREW  
G11-10-10B (2)  
SCREW  
G32-10-60B  
COVER  
69238-01-000  
CONNECTOR  
8311-01-000

WIRE  
8023-01-000  
24743-01-000  
(1200) W.(2450) I  
CONDUIT  
91234-02-000  
(825) W.(2100) I  
CONNECTOR  
91235-01-000(2)

LEFT SIDE  
110V (CAN) 90 W/ICN33RD

- 12 SEAL WITH BEDDING COMPOUND 69639-01-000.
  - 11 USE WITH 6.5 EXCHANGE.
  - 10 COVER WITH CONDUIT 41953-01-000 IN THIS AREA.
  - 9 WIRE IN SIDEWALL.
  - 8 WIRE IN ROOF.
  - 7 USE WITHOUT ROOF AIR CONDITIONER.
  - 6 WIRE TO BE LAID IN FLOOR.
  - 5 INSTALL RECEPTACLE WITH GROUND TOWARD CEILING OF VEHICLE.
  - 4 USE WITH GENERATOR.
3. ALL GROUND WIRES TO BE COVERED WITH TUBING 8041-02-000.
2. ALL WIRES ARE TO BE CLAMPED WITH CLAMP 10497-05-000 WITHIN 200 OF OUTLET BOXES. USE SCREW G67-10-12B.
1. ALL WIRE TO BE CLAMPED WITH CLAMP 10495-01-000 OR CLIP 80734-01-000 EVERY 600 USE SCREW G67-10-12B UNLESS OTHERWISE SPECIFIED.

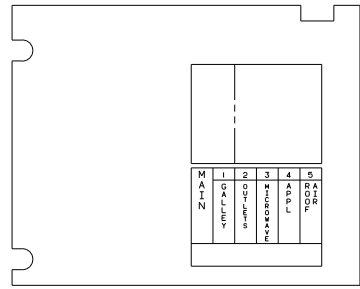
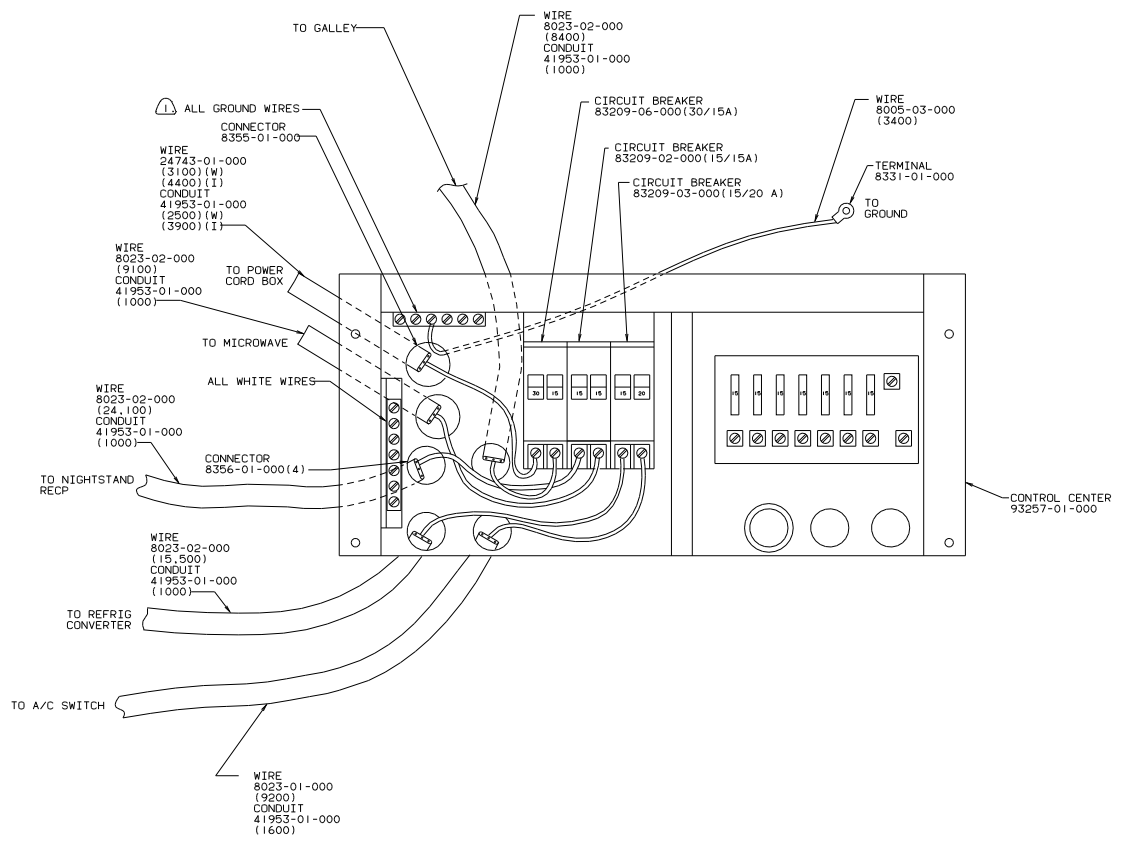


- BOX 58049-01-000
- RECP 79293-01-CHT
- SCREW G11-08-20B(4)
- WIRE 50235-01-000 (200)
- TERMINAL 8328-01-000
- SCREW G32-10-06B
- BOX-EXTERIOR 93767-01-CHT
- SCREW G11-10-12U(4)
- CONNECTOR 8313-01-000

- ④ SEAL WITH BEDDING COMPOUND 69639-01-000.
- ③ WIRE ROUTED IN FLOOR.
- ② COVER WITH CONDUIT 41953-01-000 IN THIS AREA.
- ① WIRE IN SIDEWALL.

RIGHT SIDE  
110V (CAN)  
90 W/ICN33RQ

TITLE: WIRING INSTL-BODY	
30 NET SCALE DRAWING	FILE NO 97327
SHEET 6 OF 13	1 E

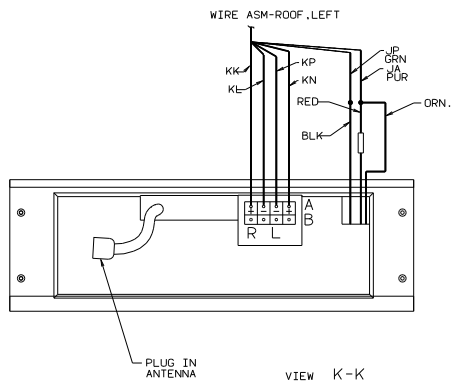
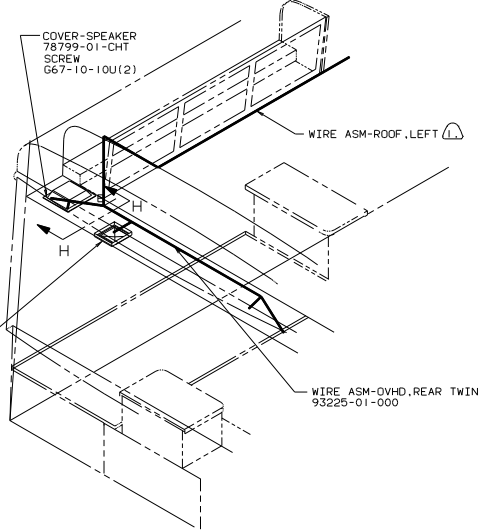
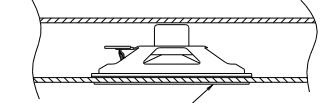
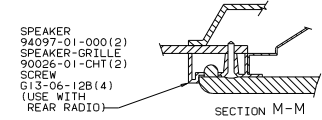
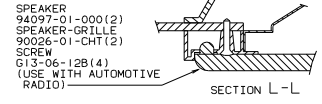
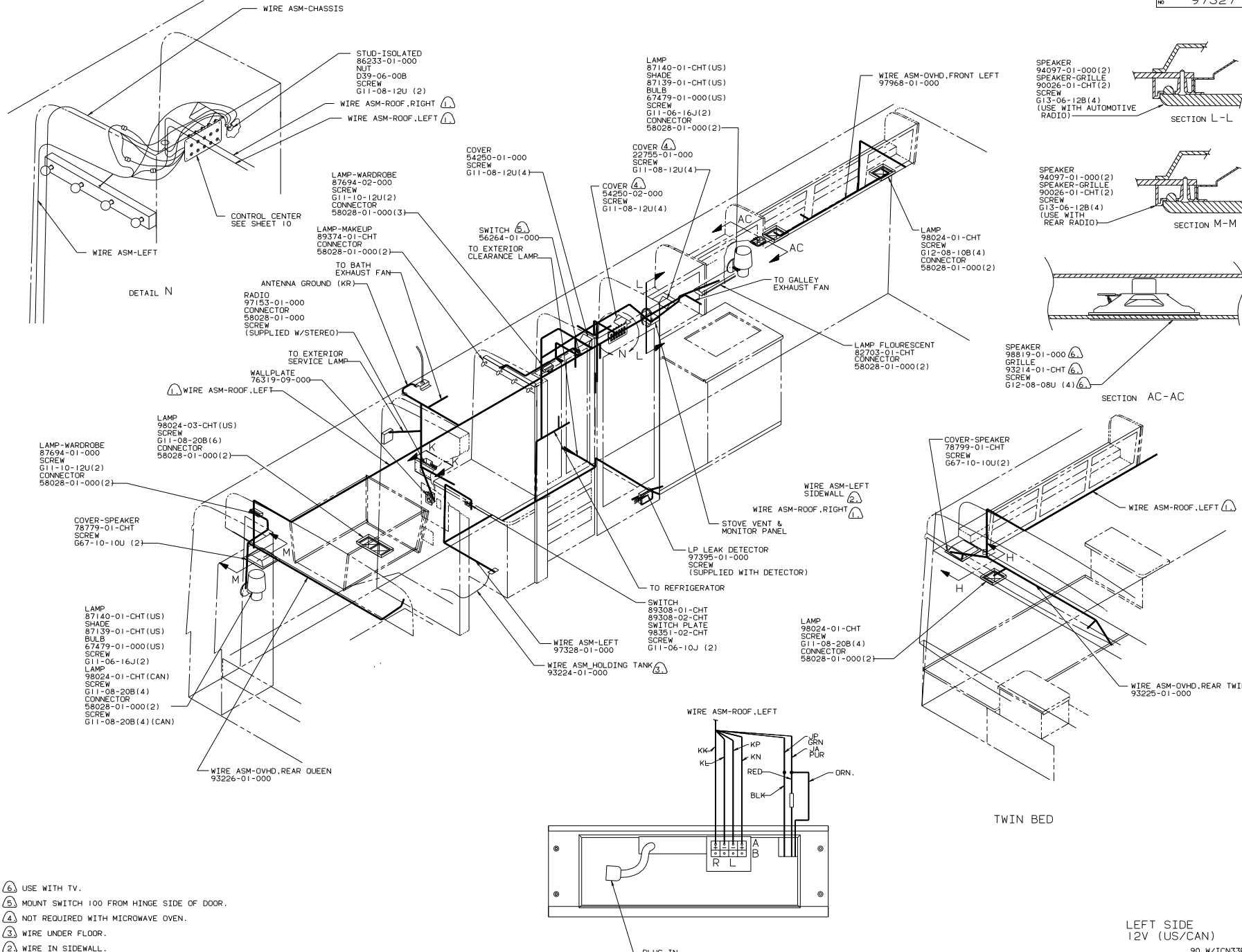


PANEL-COVER

CONTROL CENTER (CAN)  
90 W/ICN33RO

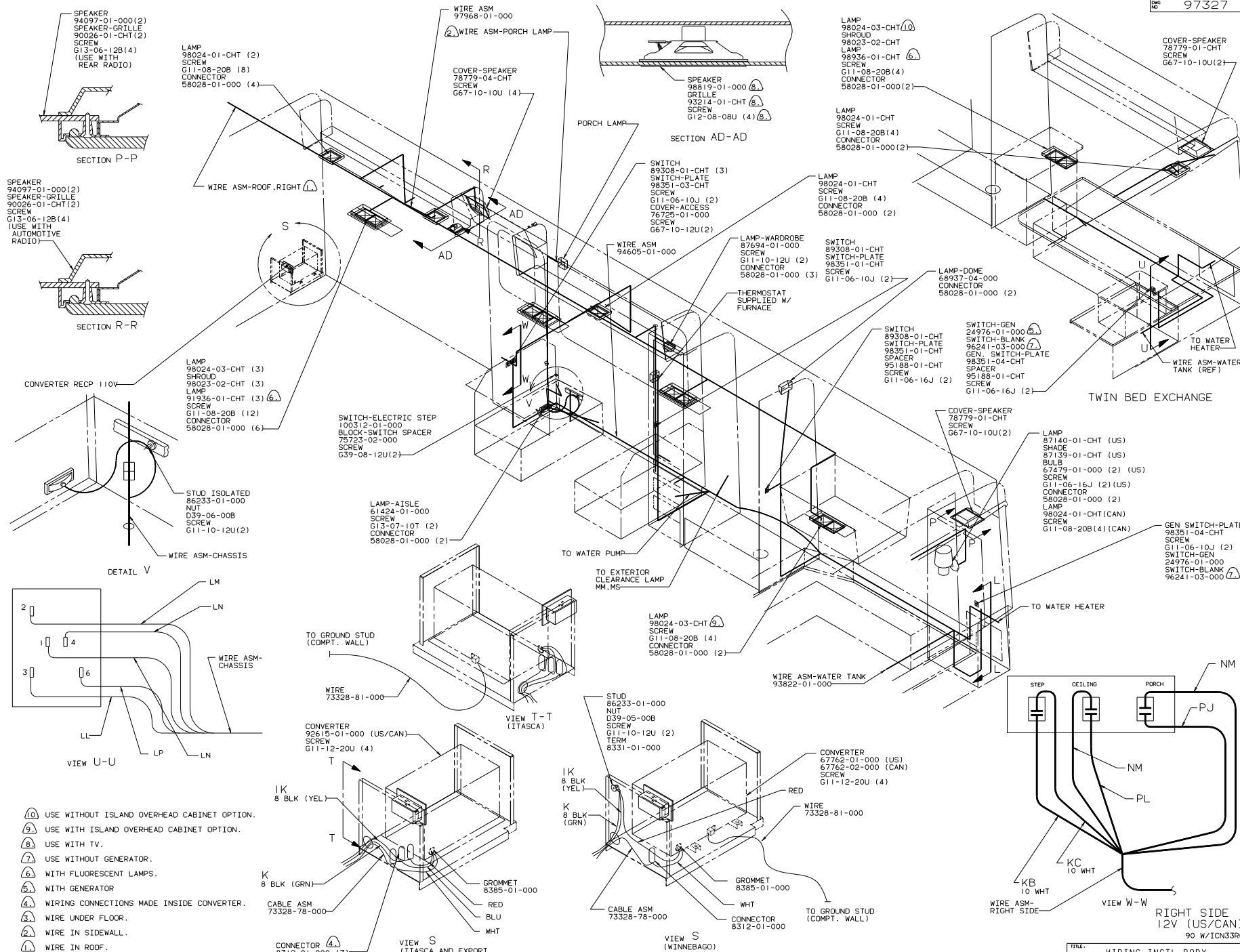
NOTES: 1 ALL GROUND WIRES TO BE COVERED WITH TUBING 8041-02-000.

TITLE		WIRING INSTALLATION-BODY	
DO NOT SCALE DRAWING	SHEET	7	of 13
DATE	REV	NO	97327

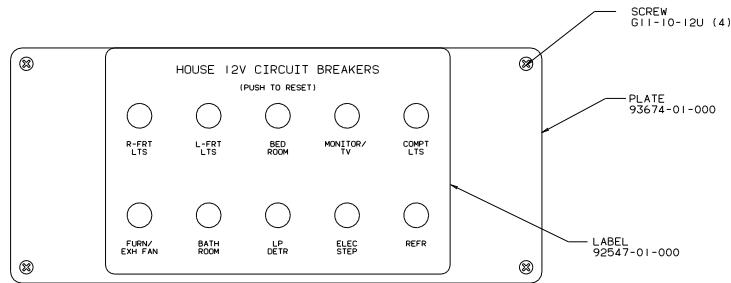


- NOTES:
- ⑥ USE WITH TV.
  - ⑤ MOUNT SWITCH 100 FROM HINGE SIDE OF DOOR.
  - ④ NOT REQUIRED WITH MICROWAVE OVEN.
  - ③ WIRE UNDER FLOOR.
  - ② WIRE IN SIDEWALL.
  - ① WIRE IN ROOF.

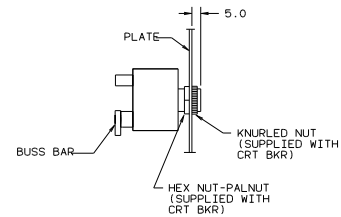




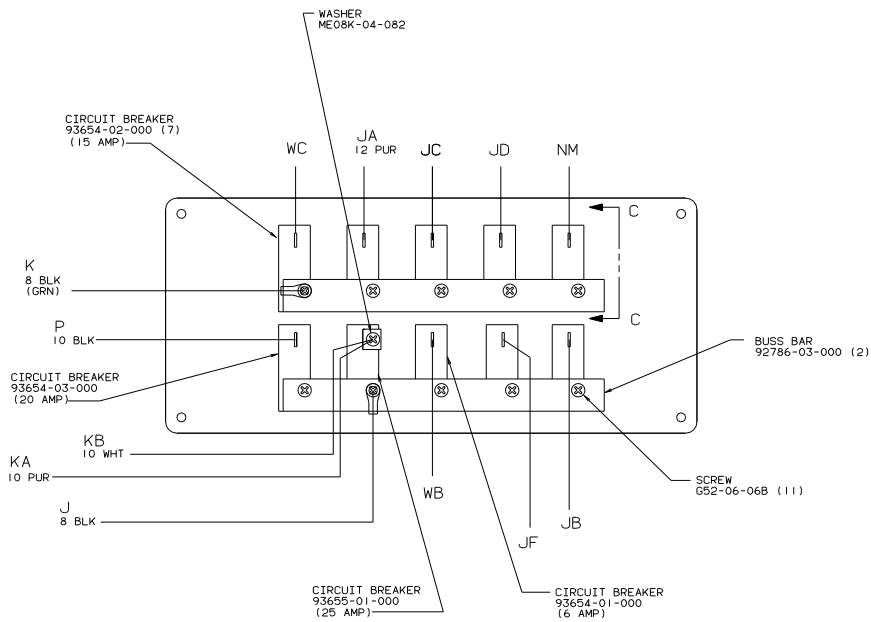
- ⑩ USE WITHOUT ISLAND OVERHEAD CABINET OPTION.
- ⑨ USE WITH ISLAND OVERHEAD CABINET OPTION.
- ⑧ USE WITH TV.
- ⑦ USE WITHOUT GENERATOR.
- ⑥ WITH FLUORESCENT LAMPS.
- ⑤ WITH GENERATOR
- ④ WIRING CONNECTIONS MADE INSIDE CONVERTER.
- ③ WIRE UNDER FLOOR.
- ② WIRE IN SIDEWALL.
- ① WIRE IN ROOF.



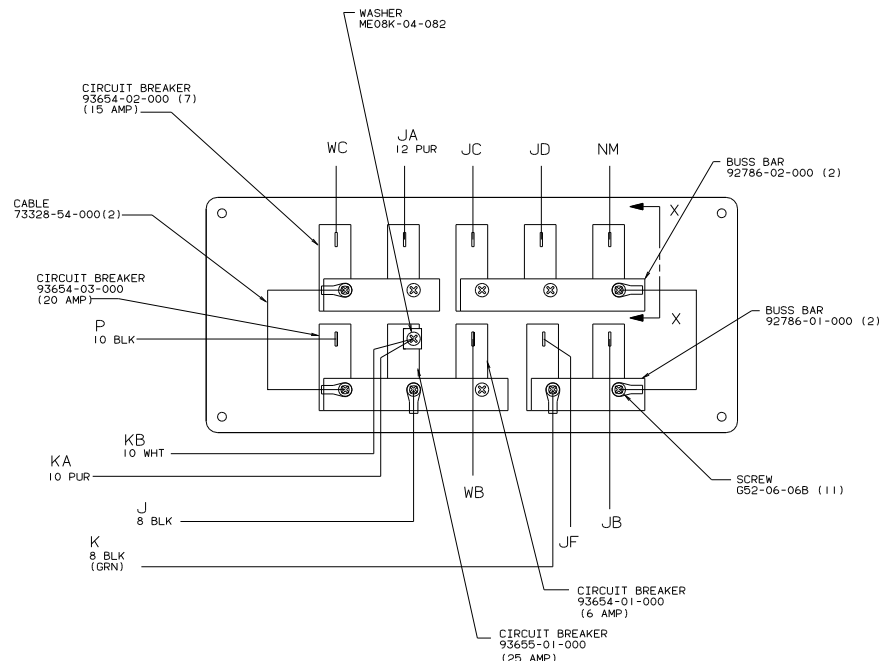
CIRCUIT BREAKER (FRONT VIEW)



SECTION X-X



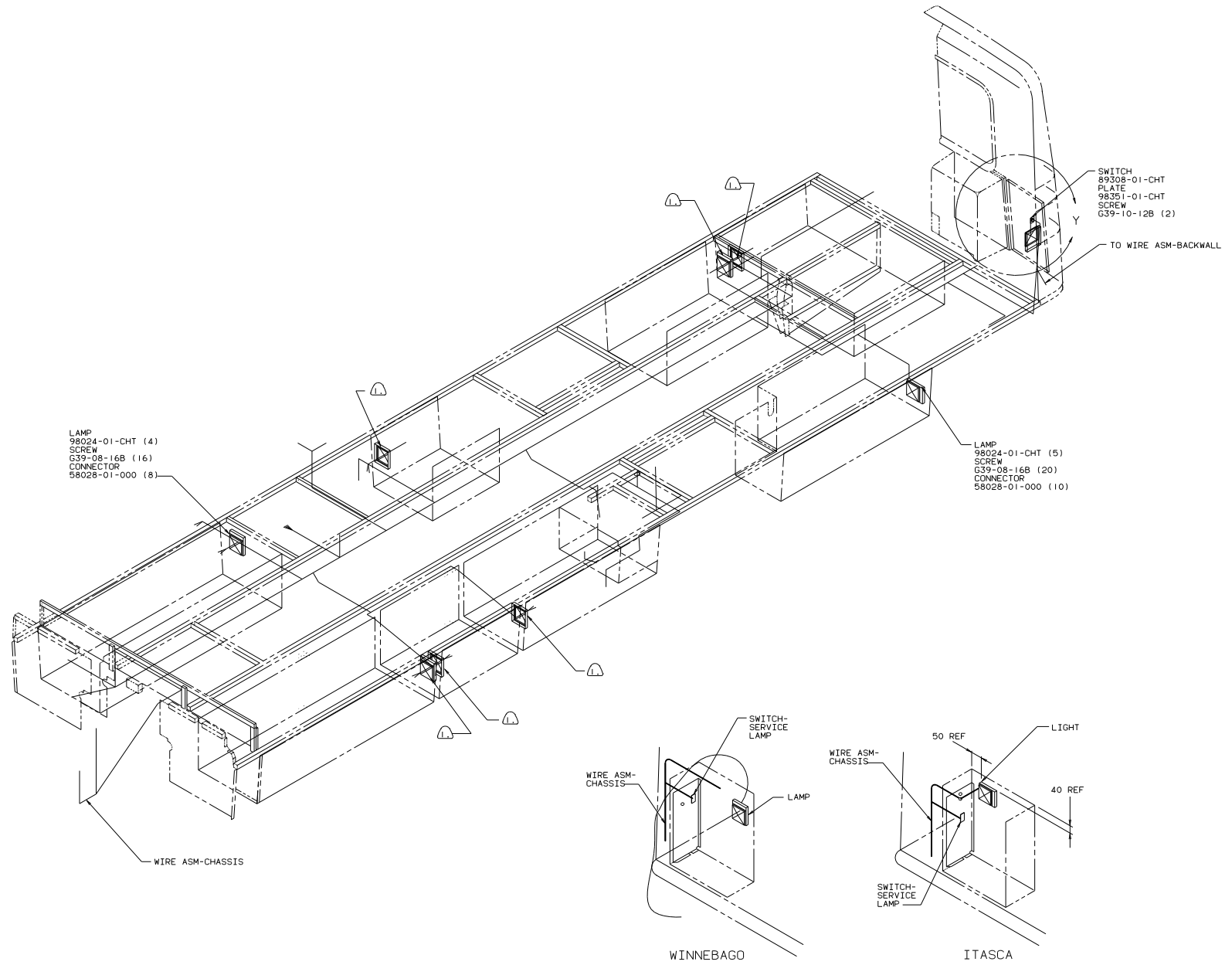
CIRCUIT BREAKER (W) (BACK VIEW)



CIRCUIT BREAKER (I) (BACK VIEW)

12V CONTROL CENTER  
90 W/1CN33RO

TITLE: WIRING INSTL-BODY	
30 NET SCALE DRAWING	DWG NO 97327
SHEET 10 OF 13	FILE NO



LAMP  
98024-01-CHT (4)  
SCREW  
G39-08-16B (16)  
CONNECTOR  
58028-01-000 (8)

SWITCH  
89308-01-CHT  
PLATE  
98351-01-CHT  
SCREW  
G39-10-12B (2)

TO WIRE ASM-BACKWALL

LAMP  
98024-01-CHT (5)  
SCREW  
G39-08-16B (20)  
CONNECTOR  
58028-01-000 (10)

WIRE ASM-CHASSIS

WIRE ASM-CHASSIS

SWITCH-SERVICE LAMP

LAMP

WIRE ASM-CHASSIS

SWITCH-SERVICE LAMP

50 REF

LIGHT

40 REF

WINNEBAGO

ITASCA

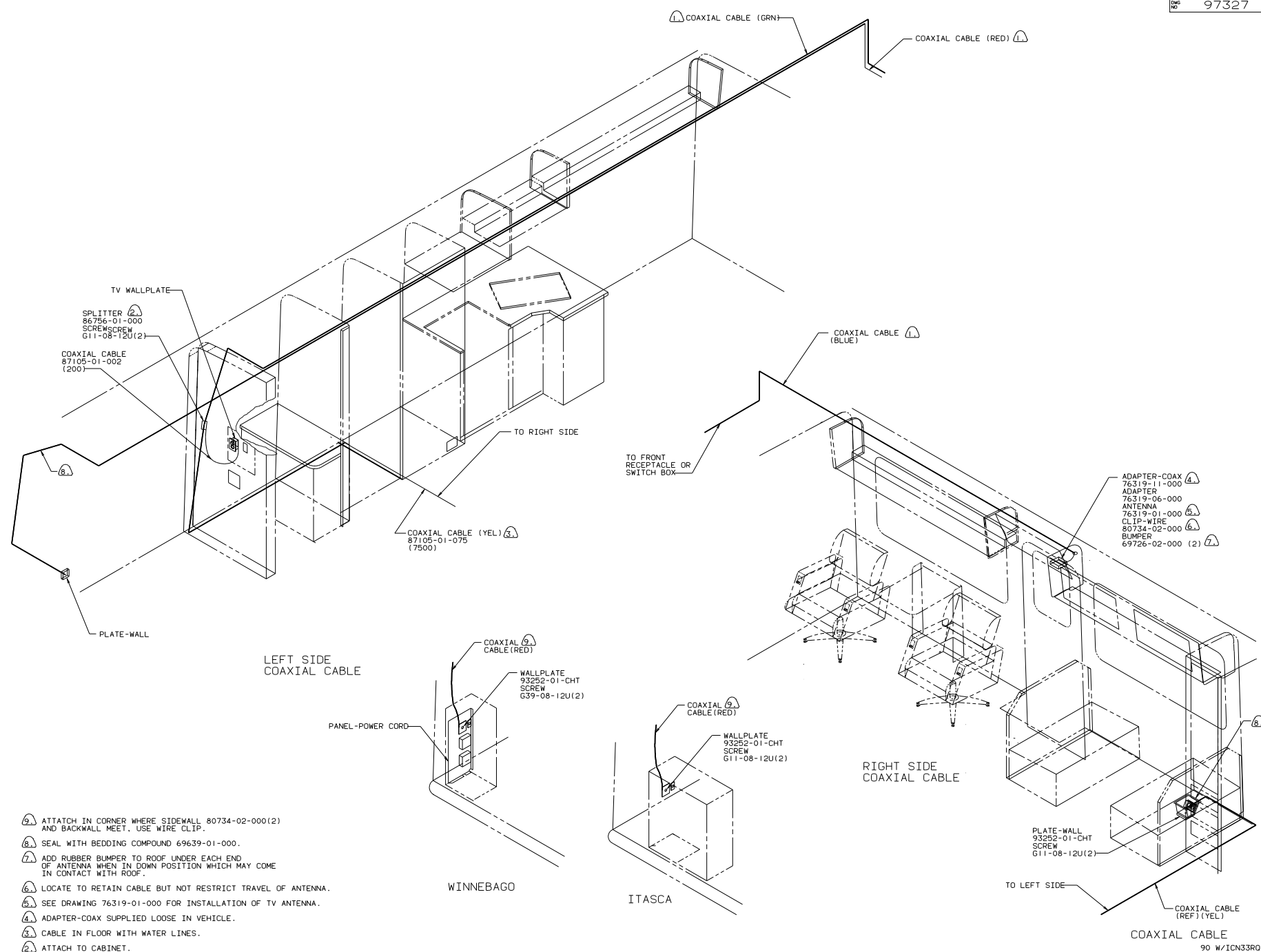
COMPARTMENT LAMPS  
90 W/ICN33R0

USE WITH WINNEBAGO.

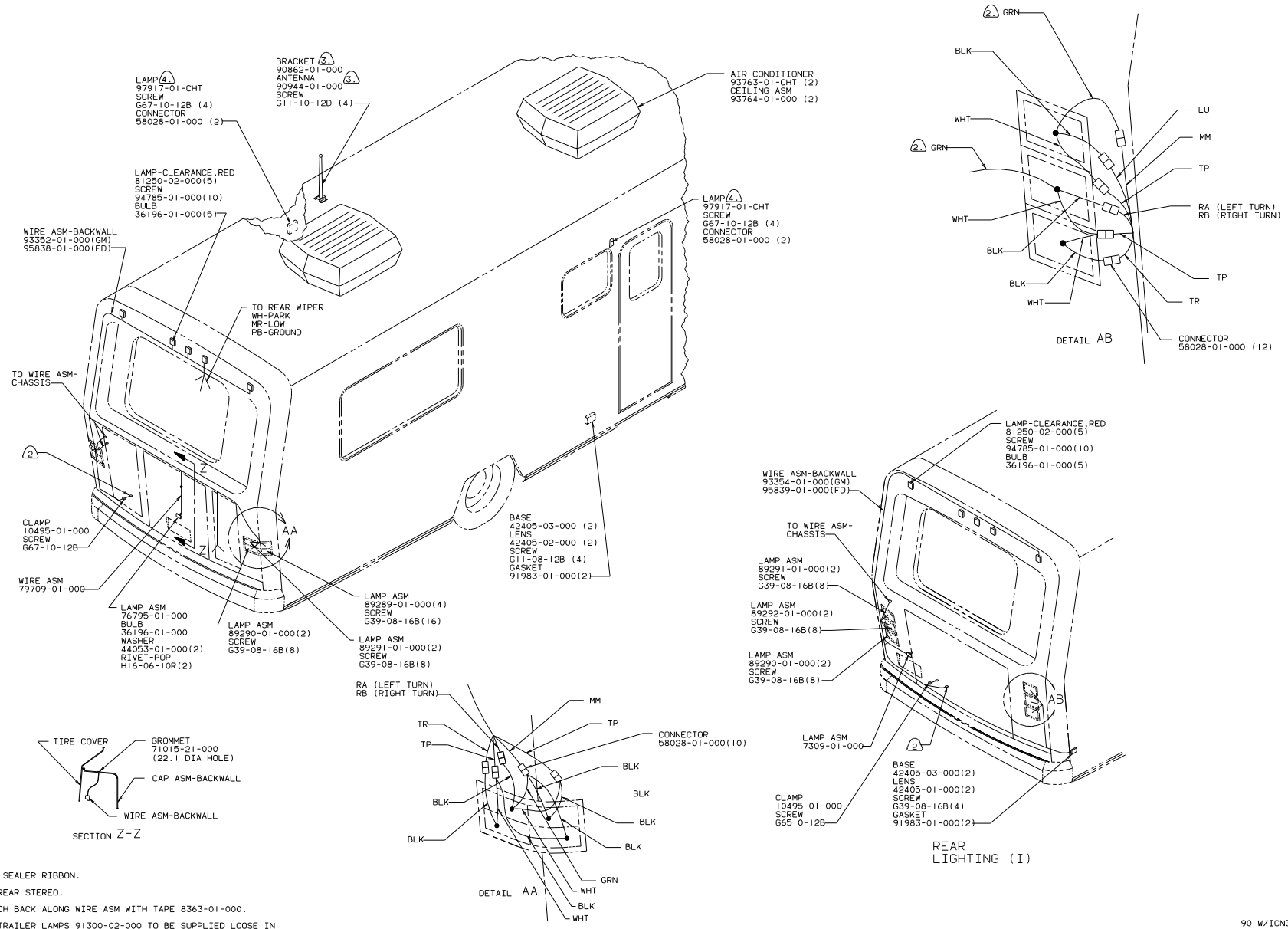
NOTES:

DETAIL Y  
ROTATED 180.

TITLE: WIRING INSTL-BODY	
30 NET SCALE DRAWING	DWG NO 97327
SHEET 11 OF 13	1 E



- ① ATTACH IN CORNER WHERE SIDEWALL 80734-02-000(2) AND BACKWALL MEET. USE WIRE CLIP.
- ② SEAL WITH BEDDING COMPOUND 69639-01-000.
- ③ ADD RUBBER BUMPER TO ROOF UNDER EACH END OF ANTENNA WHEN IN DOWN POSITION WHICH MAY COME IN CONTACT WITH ROOF.
- ④ LOCATE TO RETAIN CABLE BUT NOT RESTRICT TRAVEL OF ANTENNA.
- ⑤ SEE DRAWING 76319-01-000 FOR INSTALLATION OF TV ANTENNA.
- ⑥ ADAPTER-COAX SUPPLIED LOOSE IN VEHICLE.
- ⑦ CABLE IN FLOOR WITH WATER LINES.
- ⑧ ATTACH TO CABINET.
- ⑨ WIRE IN ROOF.



- ④ SEAL WITH SEALER RIBBON.
- ③ USE WITH REAR STEREO.
- ② TAPE BRANCH BACK ALONG WIRE ASM WITH TAPE 8363-01-000.

1. WIRE ASM-TRAILER LAMPS 91300-02-000 TO BE SUPPLIED LOOSE IN COACH WITH TRAILER TOW PACKAGE.

NOTES: