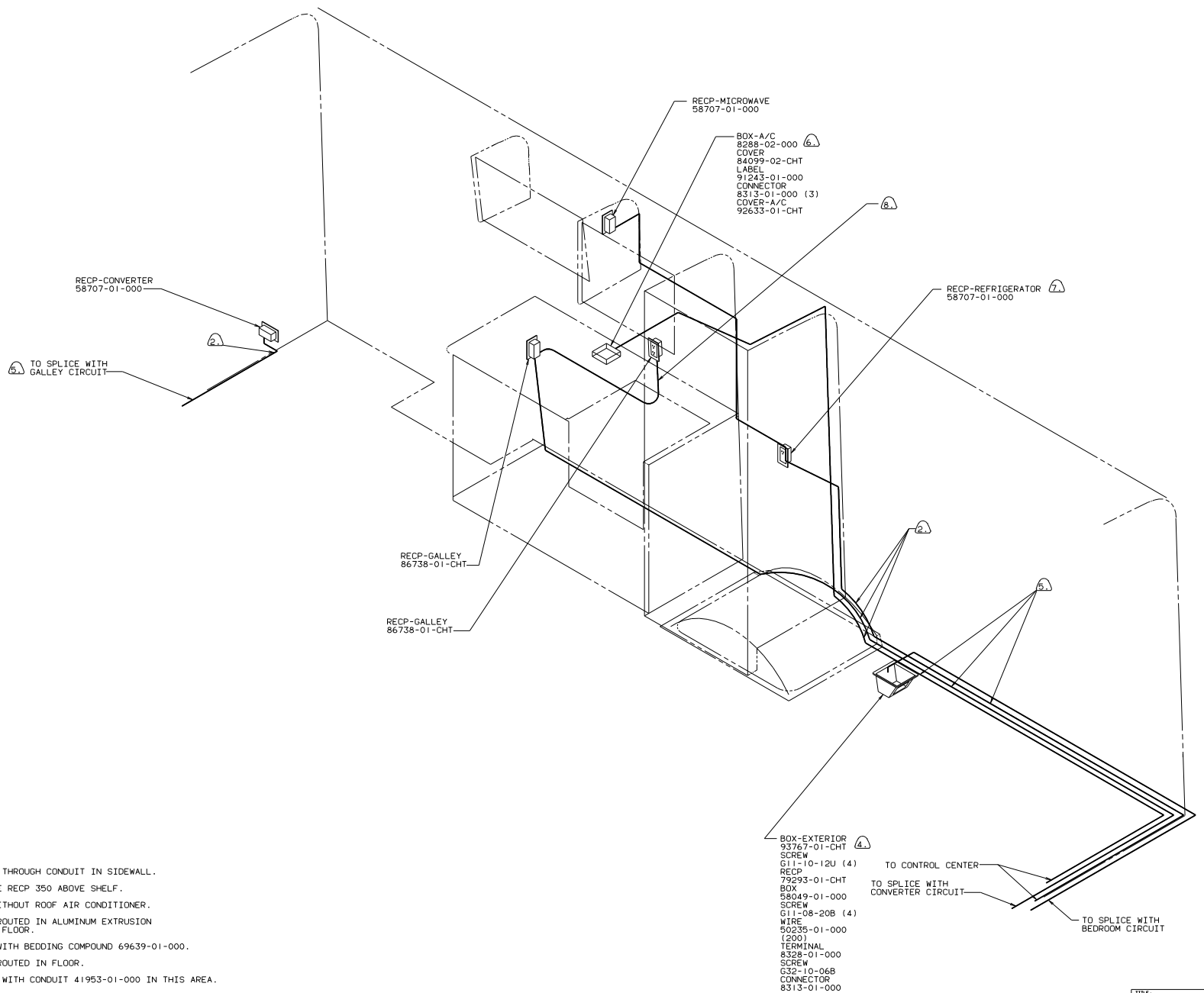


- (1) WIRES TO BE ROUTED AROUND FUEL TANK. FILL WITH TWIN BED, OVER WITH QUEEN.
 (10) WIRES GO THRU SLOT IN BACKWALL.
 (9) WIRES ROUTED IN ALUMINUM EXTRUSION ALONG FLOOR.
 (8) COVER WITH CONDUIT 41953-01-000 IN THIS AREA.
 (7) WIRE IN ROOF.
 (6) SEAL WITH BEDDING COMPOUND 69639-01-000.
 (5) INSTALL RECEPTACLE WITH GROUND TOWARD CEILING OF VEHICLE.
 (4) USE WITH GENERATOR.
 3. ALL GROUND WIRES TO BE COVERED WITH TUBING 8041-02-000.
 2. ALL WIRES ARE TO BE CLAMPED WITH CLAMP 10497-05-000 WITHIN 200 OF OUTLET BOXES. USE SCREW G67-10-12B.
 1. ALL WIRE TO BE CLAMPED WITH CLAMP 10495-01-000 OR CLIP 80734-01-000 EVERY 700. USE SCREW G67-10-12B UNLESS OTHERWISE SPECIFIED.

NOTES:

WINNEBAGO 90 W/1CN2RT
 LANP N27R19 TITLE: WIRING INSTL-BODY
 DIA # SCALE: NONE DO NOT SCALE DRAWING FILE: 097316
 ALL DIMENSIONS ARE IN MILLIMETERS SHEET 1 OF 12 97316
 REF: 94160 1



RECP-CONVERTER
58707-01-000

⑤ TO SPLICE WITH
GALLEY CIRCUIT

RECP-MICROWAVE
58707-01-000

BOX-A/C
8238-02-000
COVER
84099-02-CHT
LABEL
91243-01-000
CONNECTOR
8313-01-000 (3)
COVER-A/C
92633-01-CHT

RECP-REFRIGERATOR
58707-01-000

RECP-GALLEY
86738-01-CHT

RECP-GALLEY
86738-01-CHT

BOX-EXTERIOR
93767-01-CHT
SCREW
G11-10-12U (4)
RECP
79293-01-CHT
BOX
58049-01-000
SCREW
G11-08-20B (4)
WIRE
90235-01-000
(200)
TERMINAL
8328-01-000
SCREW
G32-10-06B
CONNECTOR
8313-01-000

TO CONTROL CENTER

TO SPLICE WITH
CONVERTER CIRCUIT

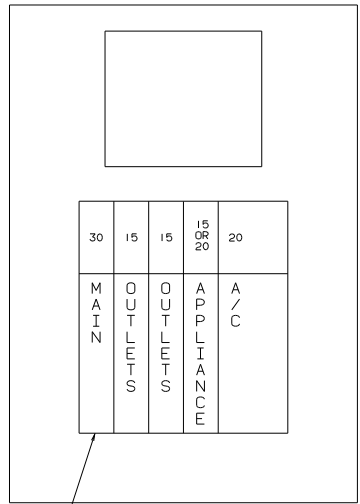
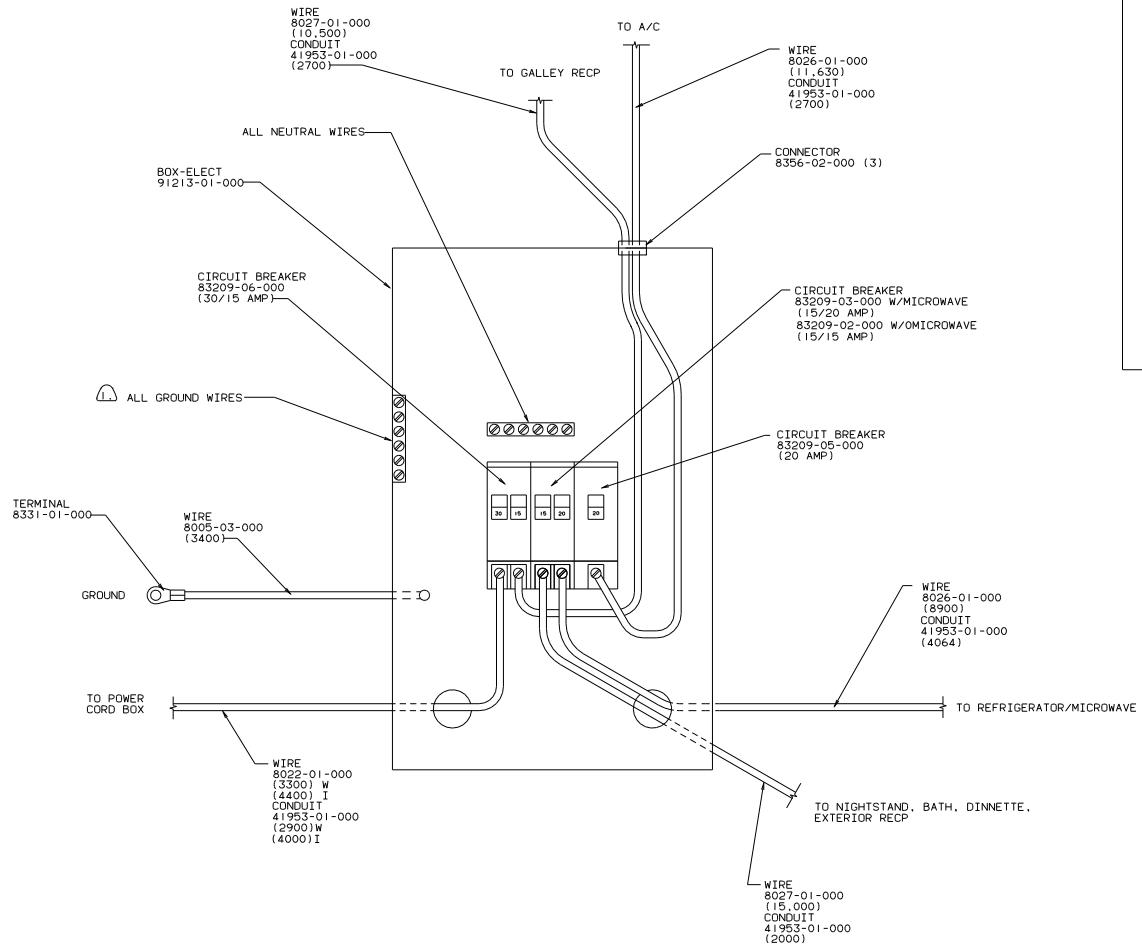
TO SPLICE WITH
BEDROOM CIRCUIT

- ⑧ ROUTE THROUGH CONDUIT IN SIDEWALL.
- ⑦ LOCATE RECP 350 ABOVE SHELF.
- ⑥ USE WITHOUT ROOF AIR CONDITIONER.
- ⑤ WIRE ROUTED IN ALUMINUM EXTRUSION ALONG FLOOR.
- ④ SEAL WITH BEDDING COMPOUND 69639-01-000.
- ③ WIRE ROUTED IN FLOOR.
- ② COVER WITH CONDUIT 41953-01-000 IN THIS AREA.
- ① WIRE IN SIDEWALL.

NOTES:

RIGHT SIDE
110V (US)
90 W/ICN27RT

TITLE: WIRING INSTL-BODY	
DO NOT SCALE DRAWING	FILE NO
SHEET 2 OF 12	97316

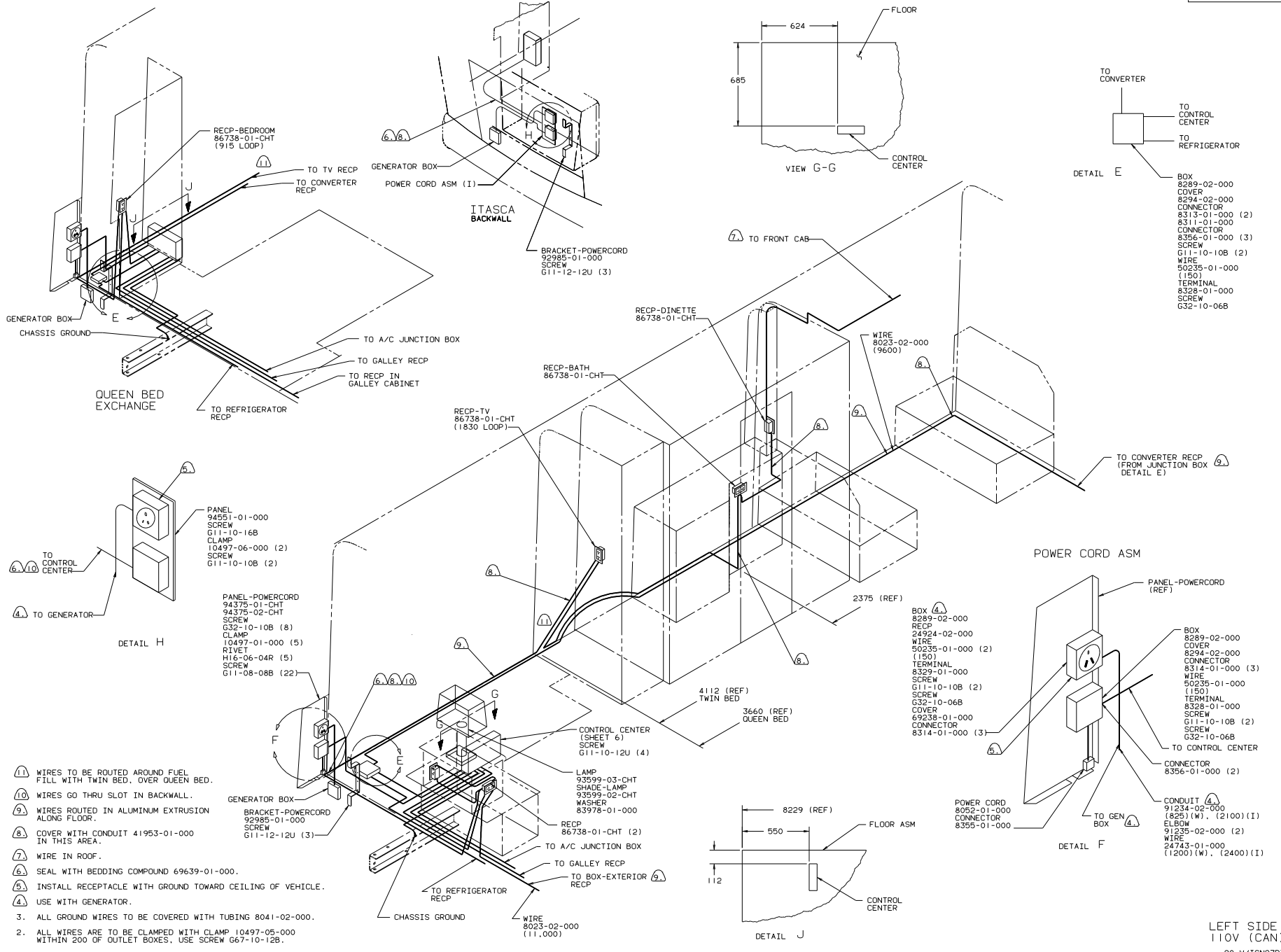


1) ALL GROUND WIRES TO BE COVERED WITH TUBING 8041-02-000.

NOTES:

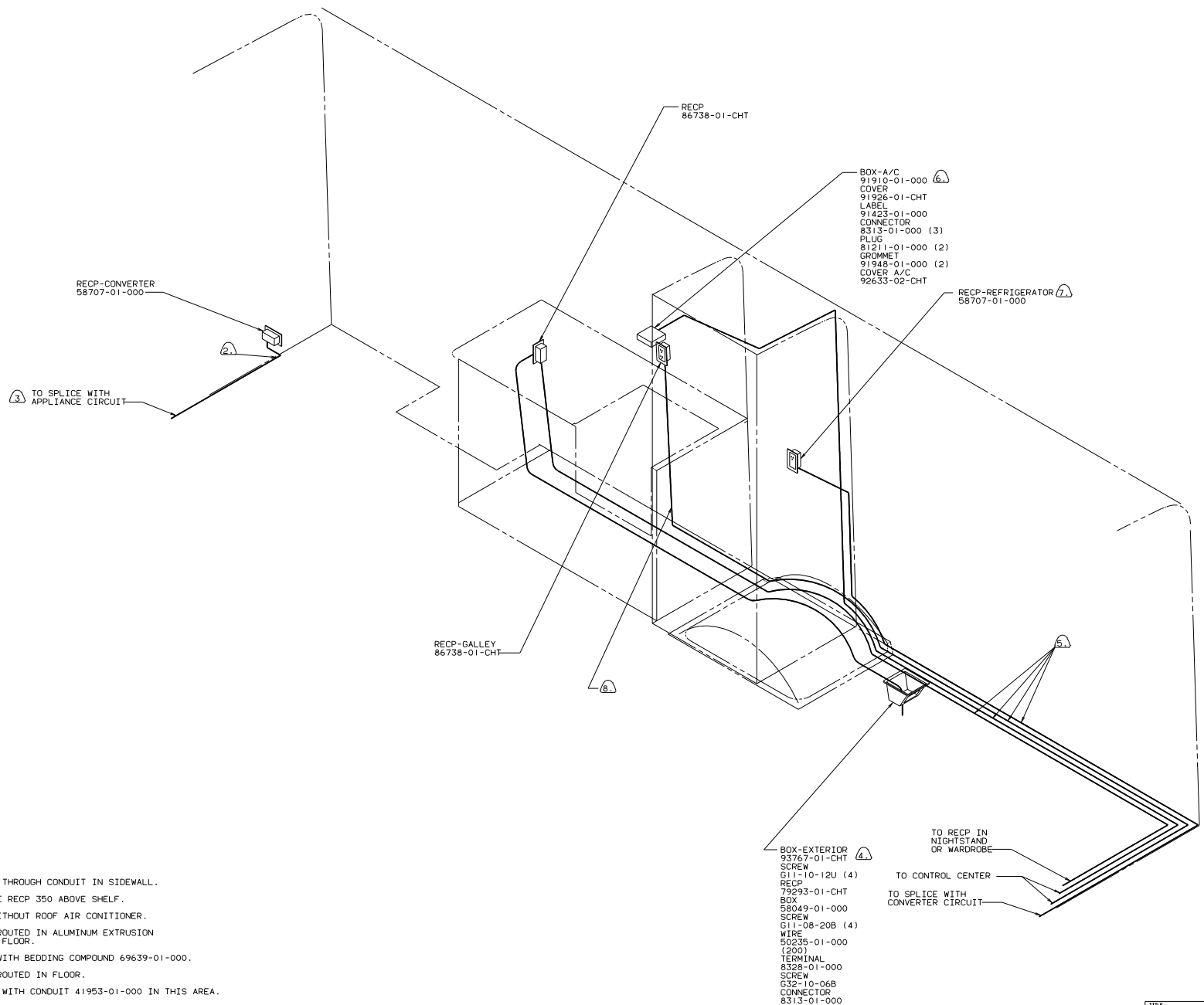
CONTROL CENTER (US)
90 W/ICN27RT

TITLE: WIRING INSTL-BODY	
30 NET SCALE DRAWING	FILE NO
SHEET 3 OF 12	16
97316	



- 1. ALL WIRE TO BE CLAMPED WITH CLAMP 10495-01-000 OR CLIP 80734-01-000 EVERY 700. USE SCREW G67-10-128 UNLESS OTHERWISE SPECIFIED.
- 2. ALL WIRES ARE TO BE CLAMPED WITH CLAMP 10497-05-000 WITHIN 200 OF OUTLET BOXES. USE SCREW G67-10-128.
- 3. ALL GROUND WIRES TO BE COVERED WITH TUBING 8041-02-000.

LEFT SIDE
110V (CAN)
90 W/ICN27RT



- BOX-A/C 91910-01-000 (6)
- COVER 91926-01-CHT
- LABEL 91423-01-000
- CONNECTOR 8313-01-000 (3)
- PLUG 81211-01-000 (2)
- GROMMET 91948-01-000 (2)
- COVER A/C 92633-02-CHT

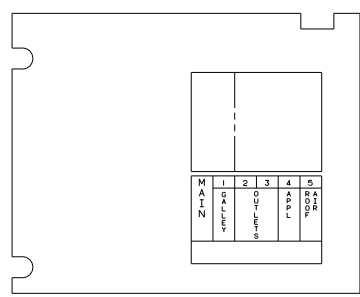
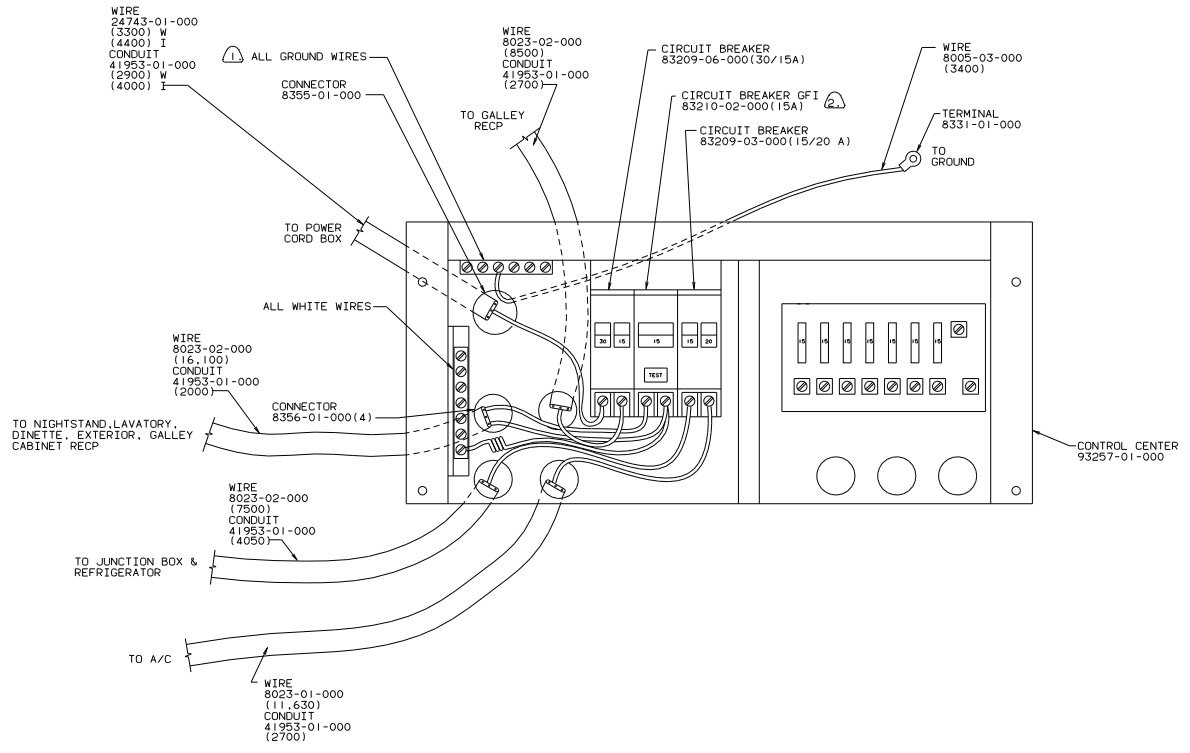
- BOX-EXTERIOR 93767-01-CHT (4)
- SCREW G11-10-12U (4)
- RECP 79293-01-CHT
- BOX 58049-01-000
- SCREW G11-08-20B (4)
- WIRE 50235-01-000 (200)
- TERMINAL 8328-01-000
- SCREW G32-10-06B
- CONNECTOR 8313-01-000

TO RECP IN NIGHTSTAND OR WARDROBE

TO CONTROL CENTER

TO SPLICE WITH CONVERTER CIRCUIT

- (6) ROUTE THROUGH CONDUIT IN SIDEWALL.
- (7) LOCATE RECP 350 ABOVE SHELF.
- (6) USE WITHOUT ROOF AIR CONITIONER.
- (5) WIRE ROUTED IN ALUMINUM EXTRUSION ALONG FLOOR.
- (4) SEAL WITH BEDDING COMPOUND 69639-01-000.
- (5) WIRE ROUTED IN FLOOR.
- (2) COVER WITH CONDUIT 41953-01-000 IN THIS AREA.
- (1) WIRE IN SIDEWALL.



PANEL-COVER

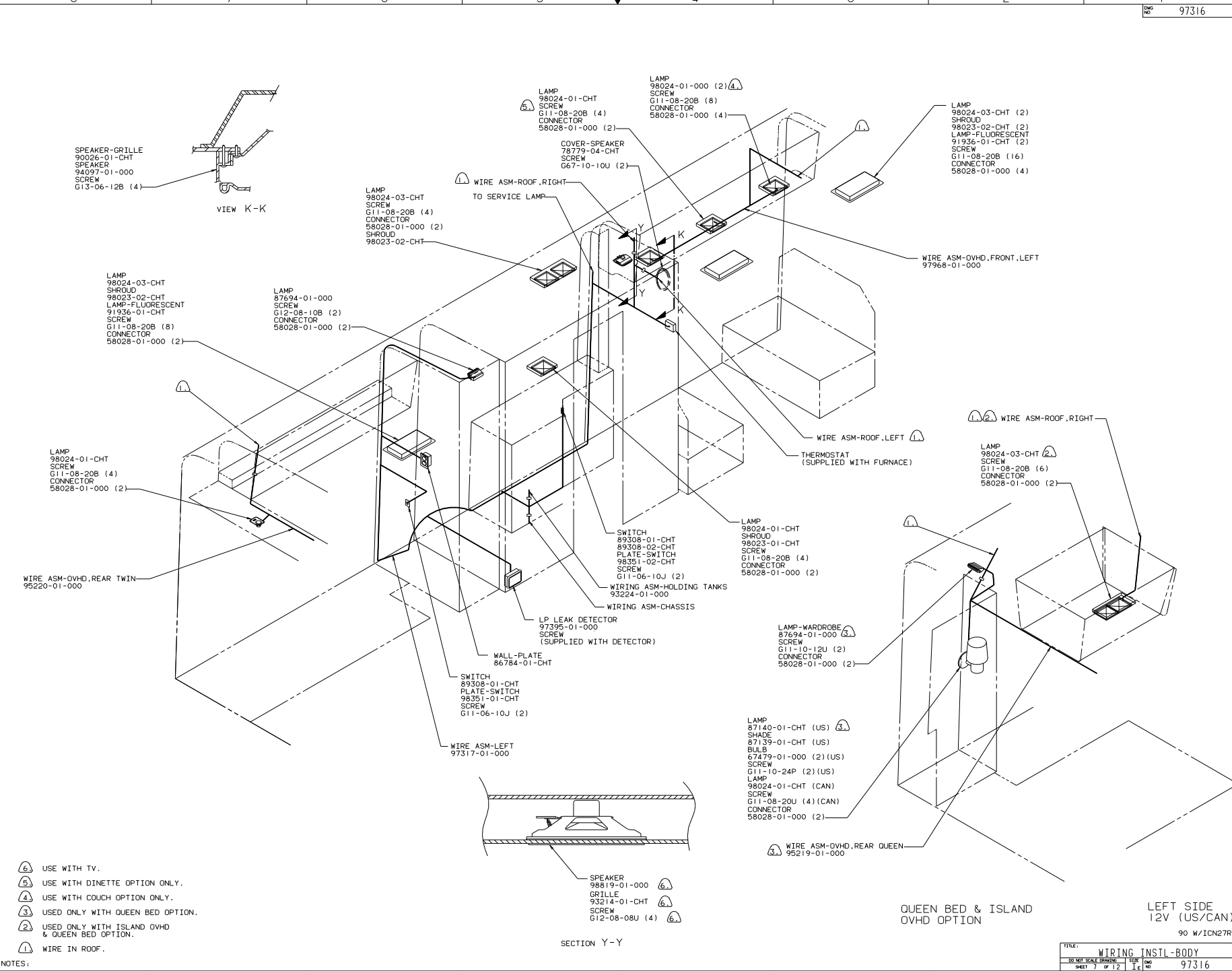
② LONG WHITE WIRE, WITH COIL, CONNECTS TO NEUTRAL BAR; WHITE WIRE FROM CIRCUIT CONNECTS TO SCREW TERMINAL ON NEUTRAL SIDE OF GROUND FAULT CIRCUIT INTERRUPTER; GFI; BLACK WIRE FROM CIRCUIT CONNECTS TO SCREW TERMINAL ON THE LOAD SIDE OF THE GFI.

① ALL GROUND WIRES TO BE COVERED WITH TUBING 8041-02-000.

CONTROL CENTER (CAN)

90 W/ICN27RT

TITLE: WIRING INSTL-BODY	
30 NET SCALE DRAWING	FILE NO 97316
SHEET 6 OF 12	1 E



- (1) USE WITH TV.
- (2) USE WITH DINETTE OPTION ONLY.
- (3) USE WITH COUCH OPTION ONLY.
- (4) USED ONLY WITH QUEEN BED OPTION.
- (5) USED ONLY WITH ISLAND OVHD & QUEEN BED OPTION.
- (6) WIRE IN ROOF.

SECTION Y-Y

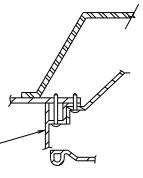
QUEEN BED & ISLAND OVHD OPTION

LEFT SIDE 12V (US/CAN)

90 W/ICN27RT

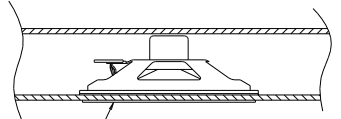
TITLE: WIRING INSTL-BODY	
30 NET SCALE DRAWING	FILE NO
SHEET 7 OF 12	1 E
97316	

SPEAKER-GRILLE
90026-01-CHT
SPEAKER
94097-01-000
SCREW
G13-06-12B (4)



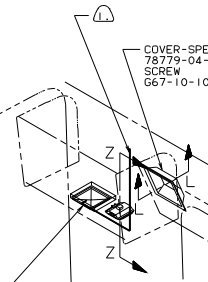
VIEW L-L

SPEAKER
98819-01-000 (6)
GRILLE
93214-01-CHT
SCREW
G12-08-08U (4)



VIEW Z-Z

COVER-SPEAKER
78779-04-CHT
SCREW
G67-10-10U (4)



SWITCH-ELECTRIC STEP
100312-01-000
BLOCK-SWITCHSPACER
75723-02-000
SCREW
G39-08-12U (2)

LAMP
82703-01-CHT
SCREW
G11-10-12U (2)
CONNECTOR
58028-01-000 (2)

WIRE ASM-RIGHT
STUD-INSULATED
86233-01-000
NUT
D39-06-00B
SCREW
G11-10-12U (2)

DETAIL R

WIRE ASM-CHASSIS

COVER
22755-01-000
SCREW
G11-10-12U (4)

WIRE ASM-ROOF, RIGHT

WIRE ASM-ROOF, LEFT

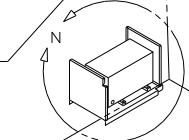
SUPPORT-DIMMER SWITCH
54250-02-000
SCREW
G11-10-12U (4)

WARDROBE LAMP
87694-01-000
SCREW
G11-10-12U (2)
CONNECTOR
58028-01-000 (2)

WIRE ASM-OVHD REAR, TWIN

LAMP
98024-01-CHT
SCREW
G12-08-20B (4)
CONNECTOR
58028-01-000 (2)

LAMP
98024-01-CHT
SCREW
G11-08-20B (4)
CONNECTOR
58028-01-000 (2)



SWITCH
89308-01-CHT (3)
PLATE-SWITCH
98351-03-CHT
SCREW
G11-06-10J (2)

LAMP
61424-01-000
SCREW
G13-07-10H (2)
CONNECTOR
58028-01-000 (2)

WIRE ASM-PORCH LAMP

TO MONITOR PANEL
CONTROL CENTER
(SHEET 9)

WIRE ASM-RIGHT
97318-01-000

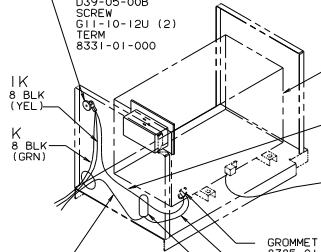
WIRE ASM-CHASSIS

WIRE ASM-WATER TANK
93822-01-000

WATER HEATER
CONNECTOR
58028-01-000 (3)

WATER PUMP
CONNECTOR
58028-01-000 (2)

STUD-INSULATED
86233-01-000
NUT
D39-05-00B
SCREW
G11-10-12U (2)
TERM
8331-01-000



DETAIL N
(WINNEBAGO)

CONVERTER
67762-01-000 (US)
67762-02-000 (CAN)
SCREW
G11-12-20U (4)

WIRE
73328-81-000

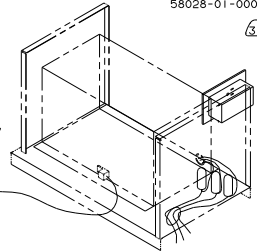
GROMMET
8385-01-000

WHT

CONNECTOR
8312-01-000

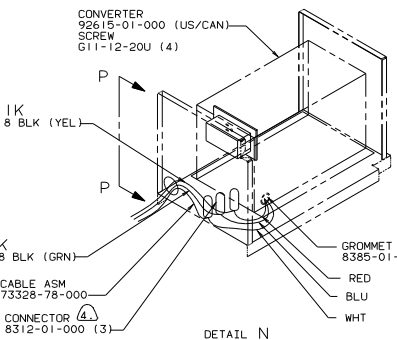
WIRE
73328-81-000

TO GROUND STUD
(COMPT. WALL)



VIEW P-P

CONVERTER
92615-01-000 (US/CAN)
SCREW
G11-12-20U (4)



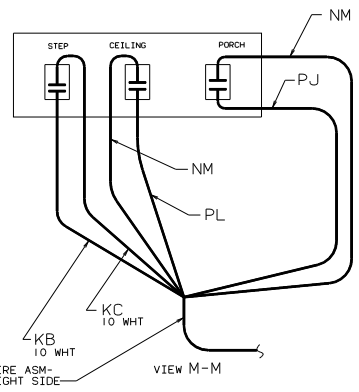
DETAIL N
(ITASCA AND EXPORT UNITS)

LAMP-WARDROBE
87694-01-000
SCREW
G11-10-12U (2)
CONNECTOR
58028-01-000 (2)

WIRE ASM-OVHD,
REAR QUEEN

QUEEN BED
EXCHANGE

LAMP
87140-01-CHT (US)
SHADE
87139-01-CHT (US)
BULB
67479-01-000 (2) (US)
SCREW
G11-06-16J (2) (US)
LAMP
98024-01-CHT (CAN)
SCREW
G11-08-20B (4) (CAN)
CONNECTOR
58028-01-000 (2)

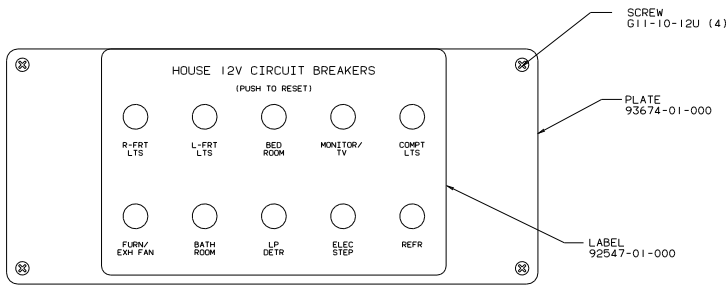


VIEW M-M

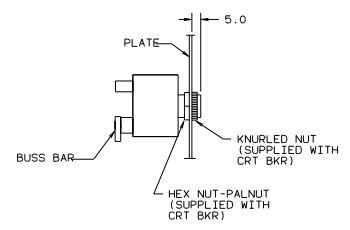
WIRE ASM-
RIGHT SIDE

RIGHT SIDE
12V (US/CAN)
90 W/1CN27RT

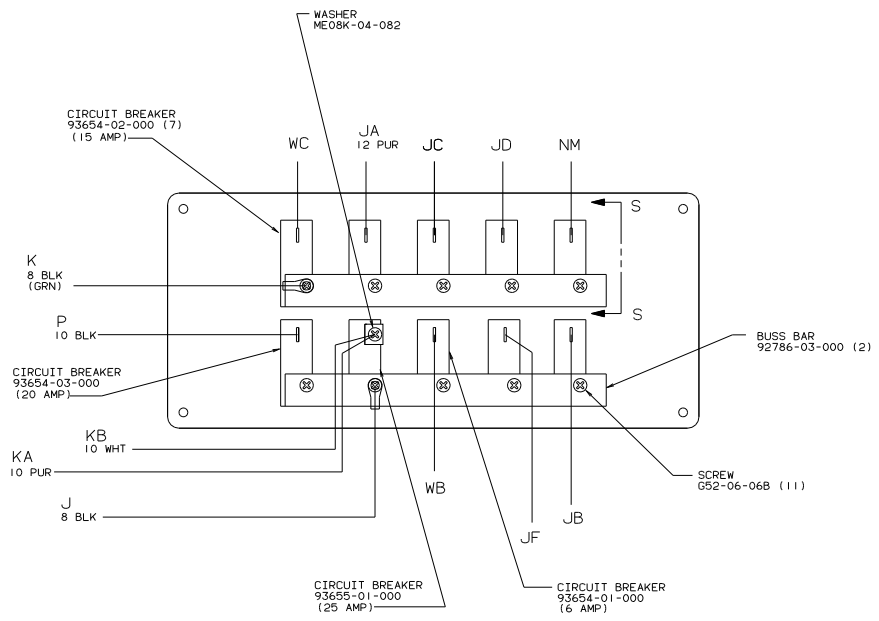
- (7) USE WITHOUT MICROWAVE ONLY.
- (6) USE WITH TV.
- (5) USED WITH TWIN BED.
- (4) WIRING CONNECTIONS MADE INSIDE CONVERTER.
- (3) WIRE IN SIDEWALL.
- (2) WIRE IN FLOOR.
- (1) WIRE IN ROOF.



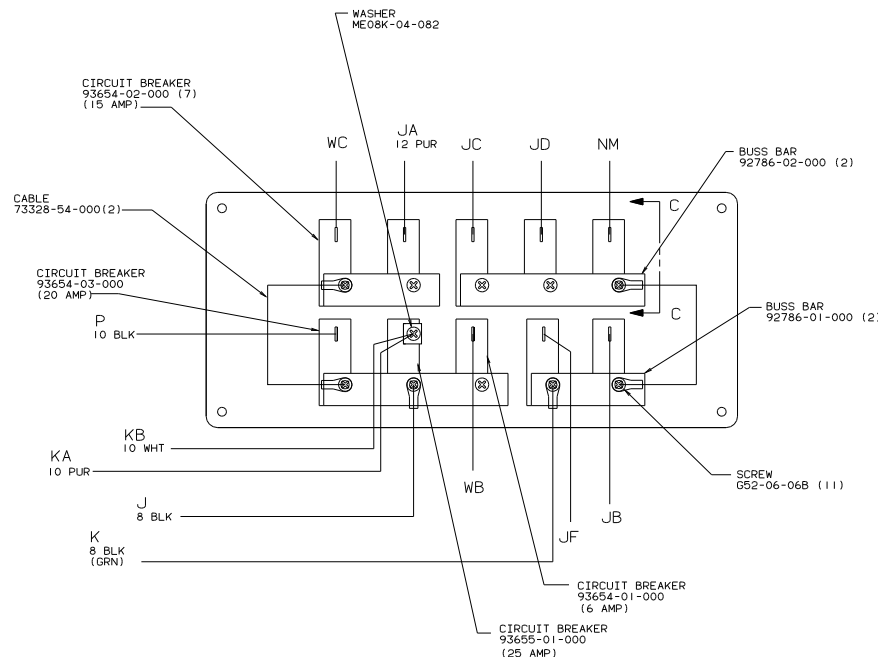
CIRCUIT BREAKER (FRONT VIEW)



SECTION S-S



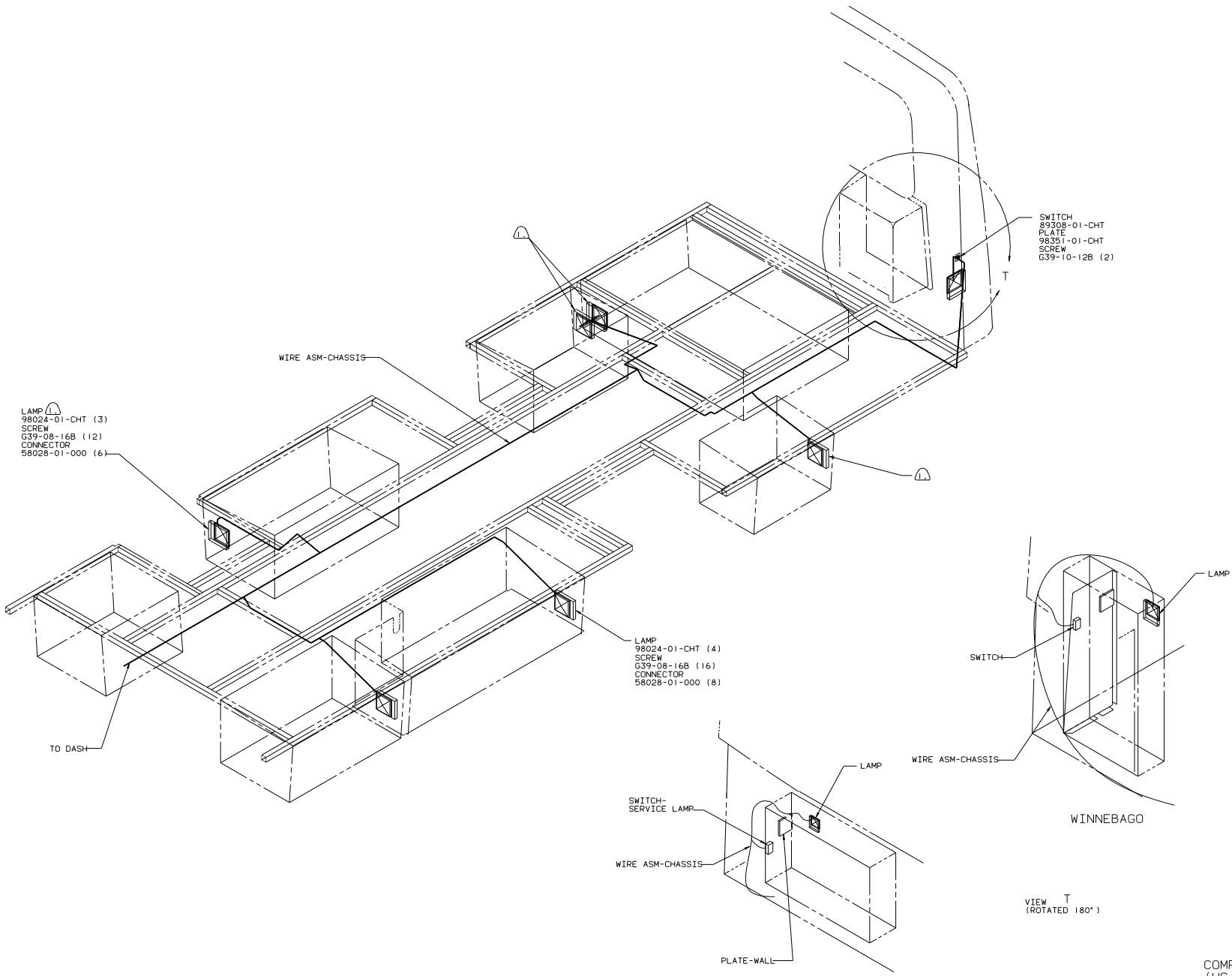
CIRCUIT BREAKER (W) (BACK VIEW)



CIRCUIT BREAKER (I) (BACK VIEW)

12V CONTROL CENTER
90 W/1CN27RT

TITLE: WIRING INSTL-BODY	
30 NET SCALE DRAWING	DWG NO 97316
SHEET 9 OF 12	1 E



LAMP (L)
 98024-01-CHT (3)
 SCREW
 G39-08-16B (12)
 CONNECTOR
 58028-01-000 (6)

SWITCH
 89308-01-CHT
 PLATE
 98351-01-CHT
 SCREW
 G39-10-12B (2)

LAMP (L)
 98024-01-CHT (4)
 SCREW
 G39-08-16B (16)
 CONNECTOR
 58028-01-000 (8)

LAMP
 SWITCH
 WIRE ASM-CHASSIS

SWITCH-SERVICE LAMP
 WIRE ASM-CHASSIS
 LAMP
 PLATE-WALL

VIEW T
 (ROTATED 180°)

WINNEBAGO

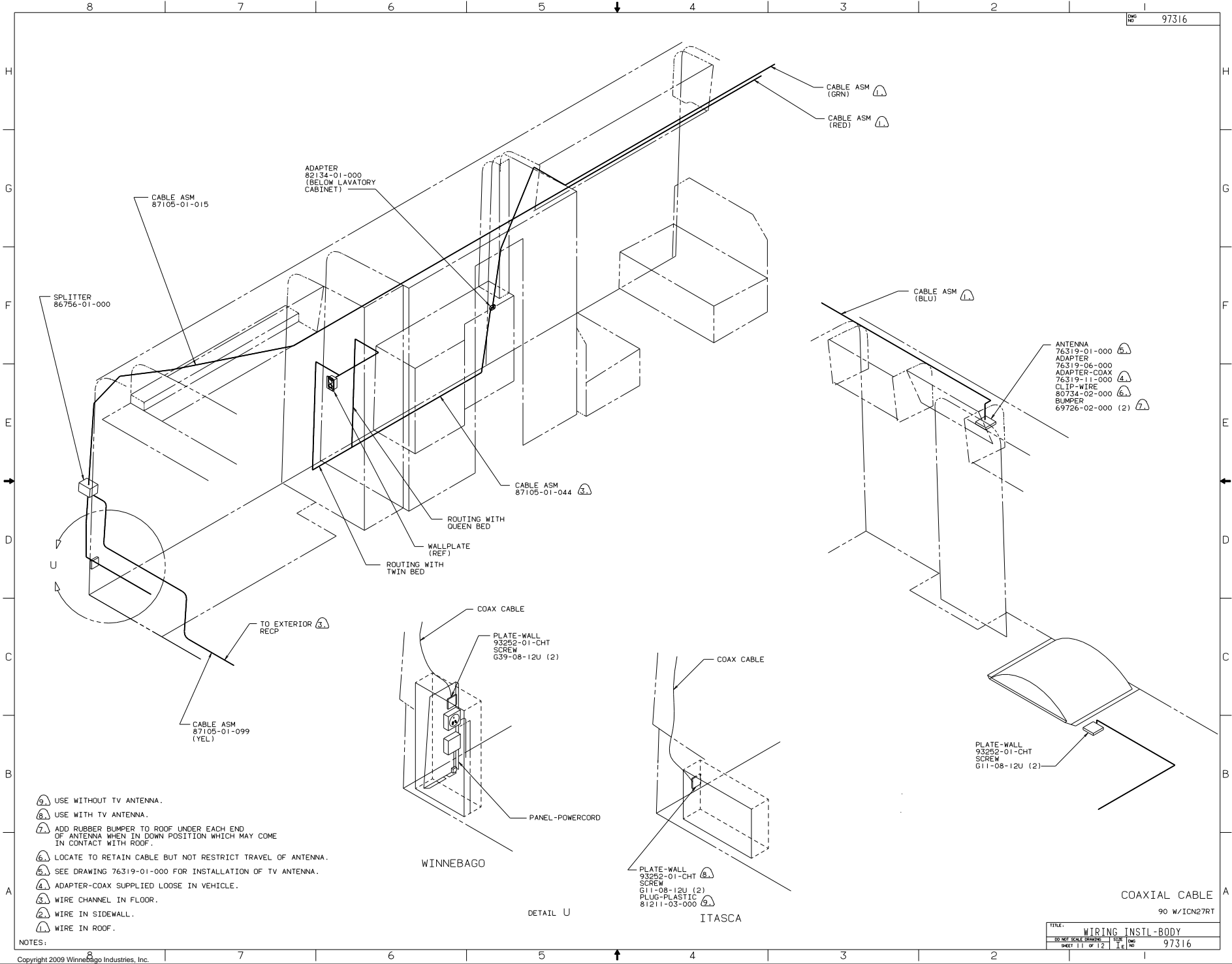
ITASCA

COMPARTMENT LAMP
 (US/CAN)
 90 W/ICN27RT

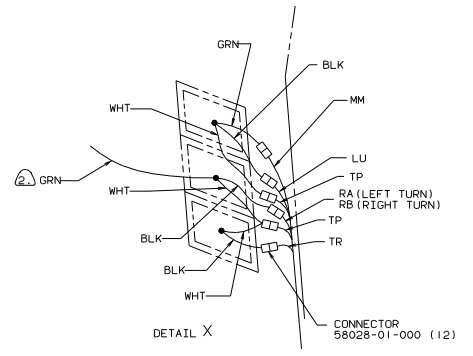
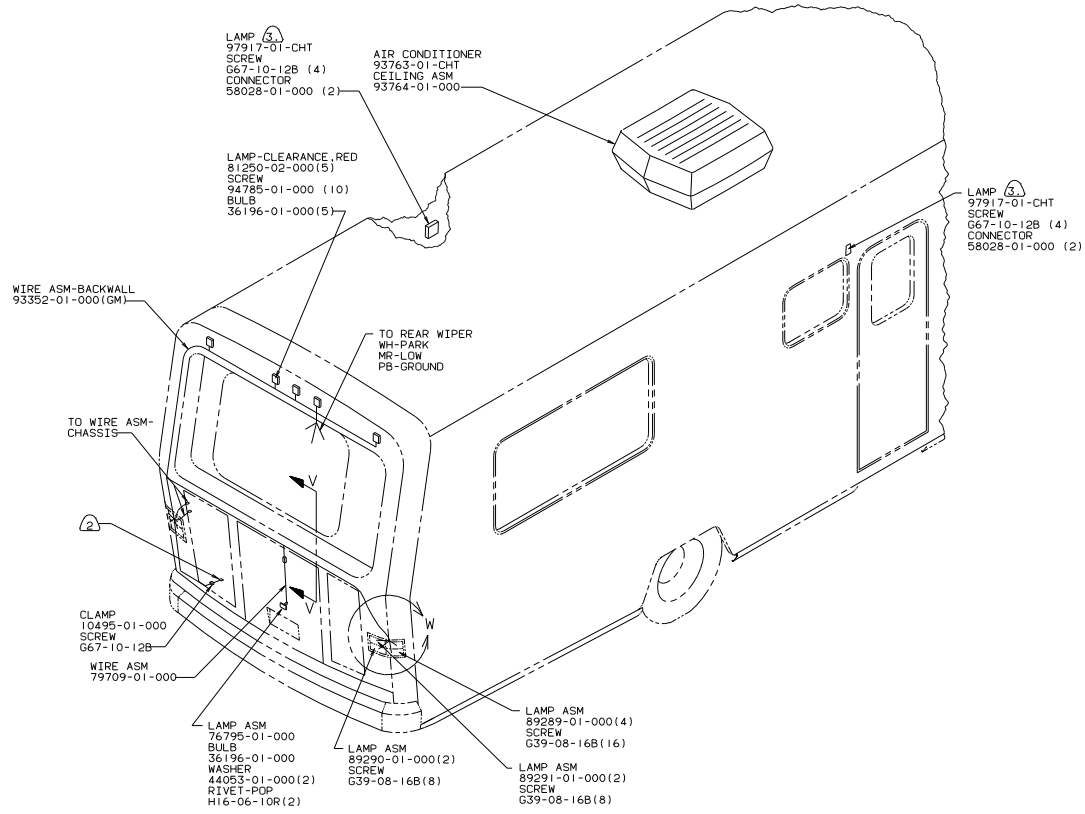
USE ON WINNEBAGO ONLY.

NOTES:

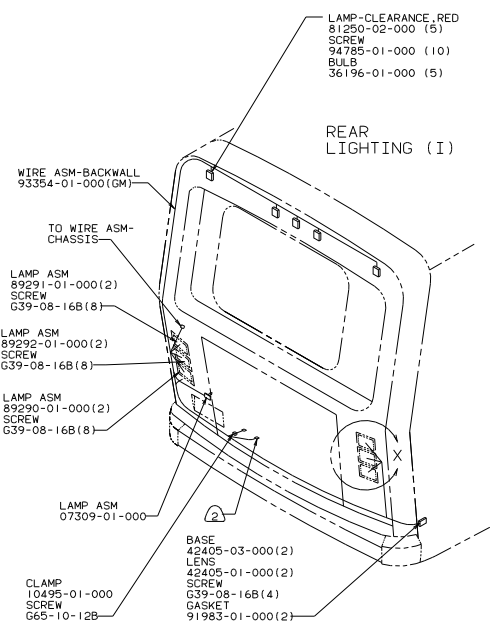
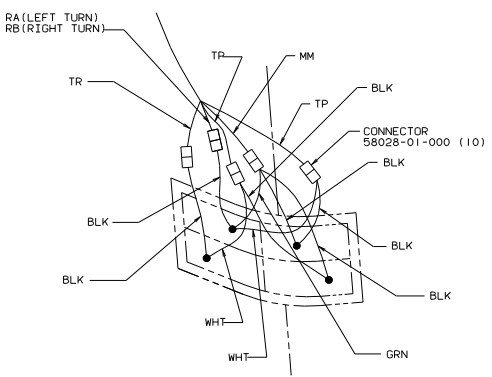
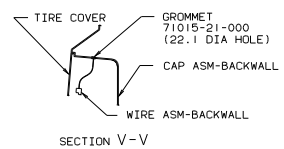
TITLE: WIRING INSTL-BODY	
30 NET SCALE DRAWING	FILE NO
SHEET 10 OF 12	97316



1. USE WITHOUT TV ANTENNA.
 2. USE WITH TV ANTENNA.
 3. ADD RUBBER BUMPER TO ROOF UNDER EACH END OF ANTENNA WHEN IN DOWN POSITION WHICH MAY COME IN CONTACT WITH ROOF.
 4. LOCATE TO RETAIN CABLE BUT NOT RESTRICT TRAVEL OF ANTENNA.
 5. SEE DRAWING 76319-01-000 FOR INSTALLATION OF TV ANTENNA.
 6. ADAPTER-COAX SUPPLIED LOOSE IN VEHICLE.
 7. WIRE CHANNEL IN FLOOR.
 8. WIRE IN SIDEWALL.
 9. WIRE IN ROOF.



WINNEBAGO



ITASCA

- ③ SEAL WITH SEALER RIBBON.
 ② TAPE BRANCH BACK ALONG WIRE ASM WITH TAPE 8363-01-000.
 1. WIRE ASM-TRAILER LIGHTS 91300-02-000 TO BE SUPPLIED LOOSE IN COACH WITH TRAILER TOW PACKAGE.

EXTERIOR LIGHTING

90 W/ICN27RT

30-MIL SCALE DRAWING	FILE NO	DWG NO
SHEET 12 OF 12	1E	97316