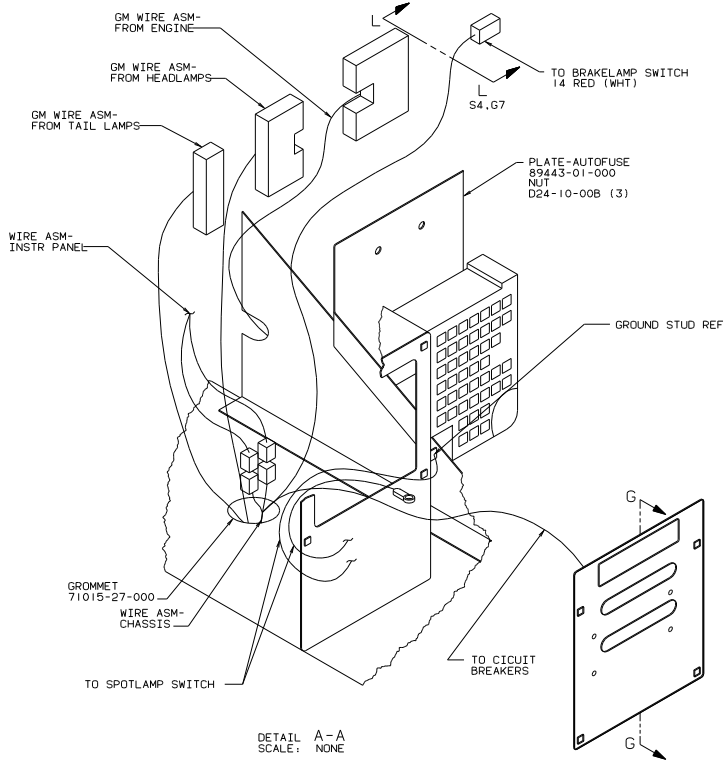


- ⑧ 1990 RLC, SEE SHEETS 3 & 7.
 - ⑦ SUPPLIED WITH CHASSIS.
 - ⑥ BATTERY CABLE TO STARTER TO BE INSTALLED BEFORE ENGINE WIRING HARNESS AND ROUTED SO AS TO PREVENT DEGRADATION BY EXHAUST SYSTEM.
 - ⑤ CLAMP 10497-02-000(9), SCREW G11-10-24B(9).
 - ④ CLAMP 83610-01-000(2), BOLT G18-10-12B(2), NUT D24-10-00B(2)
 - ③ CLAMP 83610-02-000(11), SCREW G11-10-24B(11).
2. SECURE CONDUIT 41953-09-000, 41953-10-000 OR 41953-11-000 OVER ALL WIRES IN CONTACT WITH SHARP EDGES.
1. LEGEND: — WINNEBAGO WIRING, - - - CABLE.

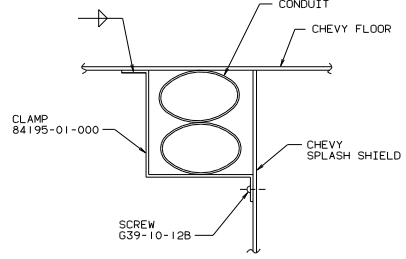
CHEVY

PART M34RA0		TITLE: WIRING INSTL-CHASSIS	
DATE: 11/11/09	SCALE: 0.08	SHEET: 1	TOTAL SHEETS: 8
UNSPECIFIED TOLERANCES ARE:		MATERIAL:	
FINISH	AS SHOWN	ANGLE	90°
DRILL	AS SHOWN	ONE-PLATE	19.21
FILE	AS SHOWN	TWO-PLATE	19.200
WELD	AS SHOWN	WELD	AS SHOWN
THREAD	AS SHOWN	THREAD	AS SHOWN
WIRE	AS SHOWN	WIRE	AS SHOWN

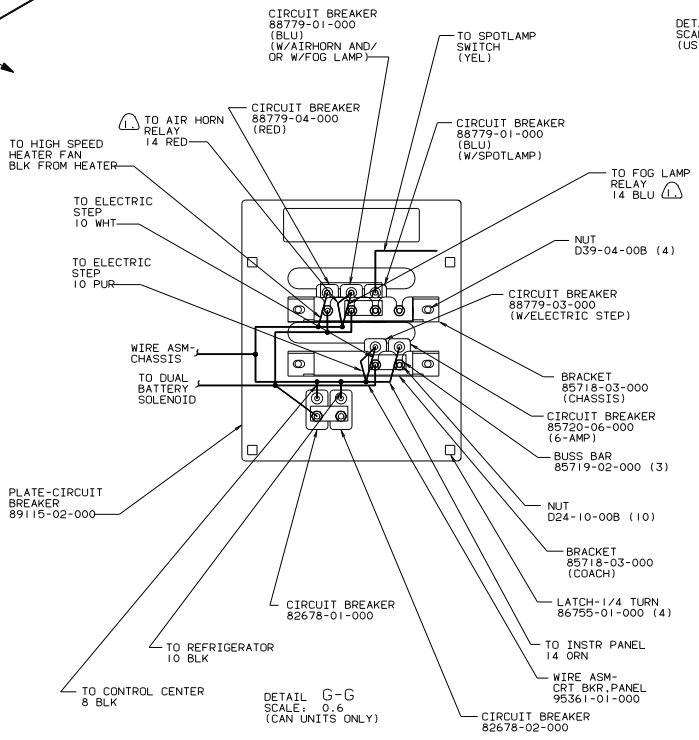
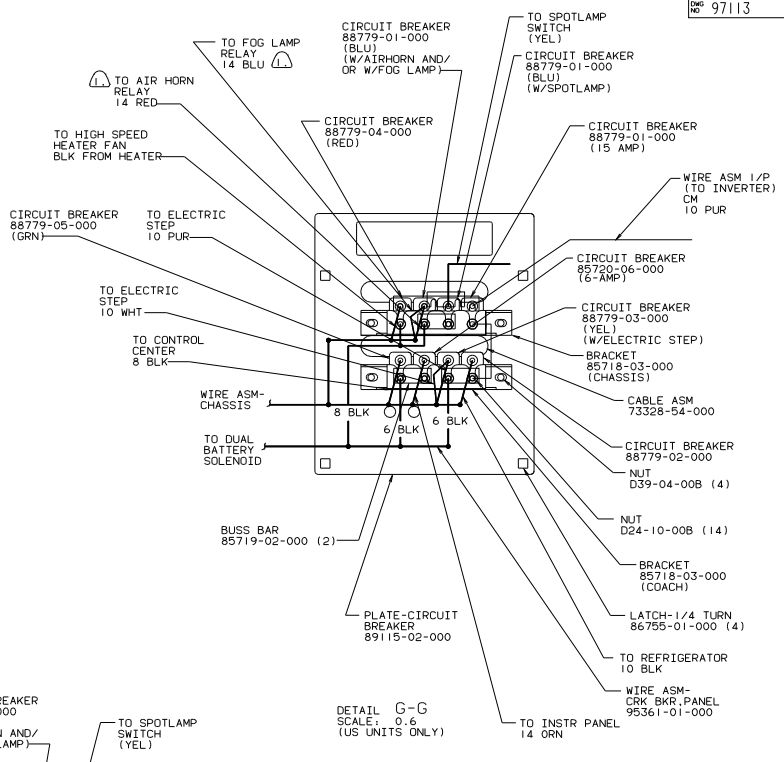
WINNEBAGO 90 W1CM34RA
 WINGS
 97113



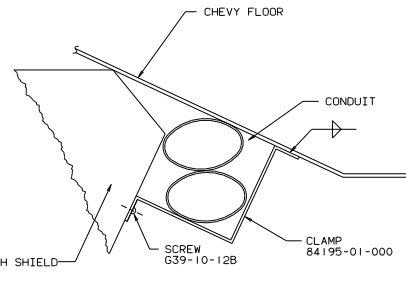
DETAIL A-A SCALE: NONE



VIEW K-K SCALE: 1



DETAIL G-G SCALE: 0.6 (CAN UNITS ONLY)



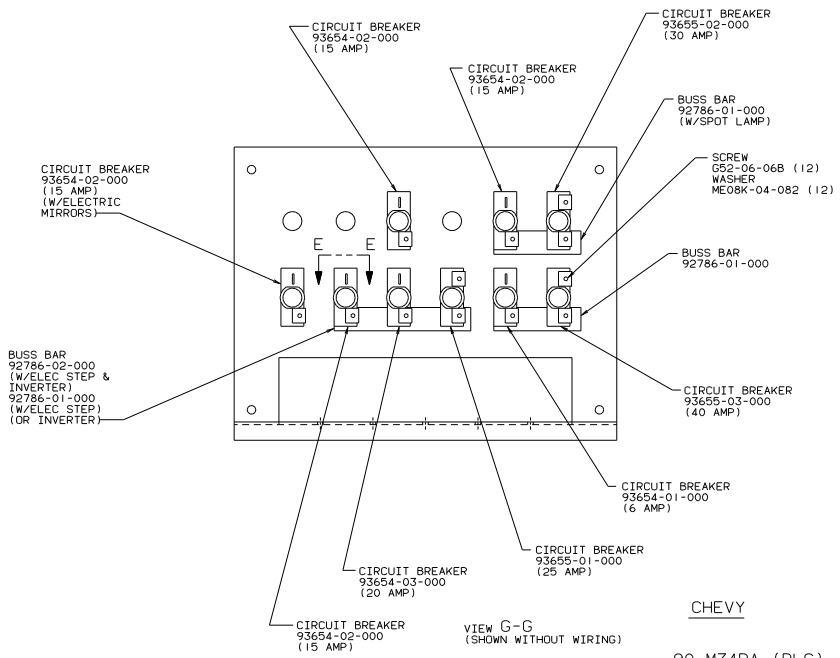
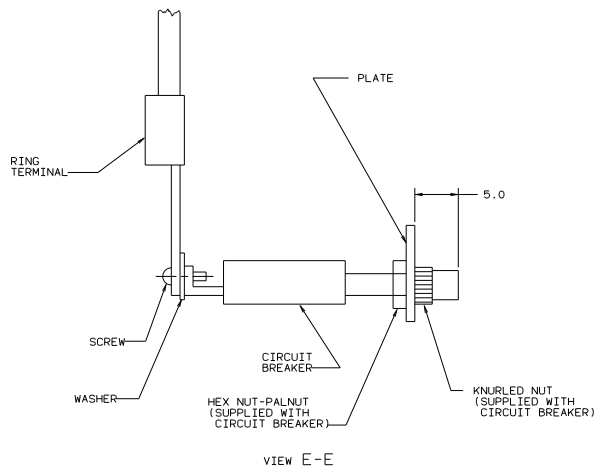
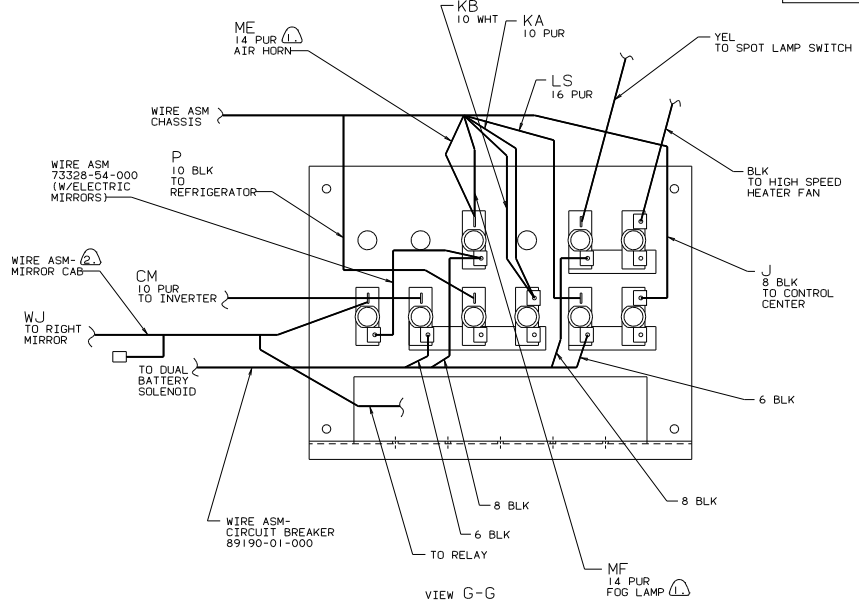
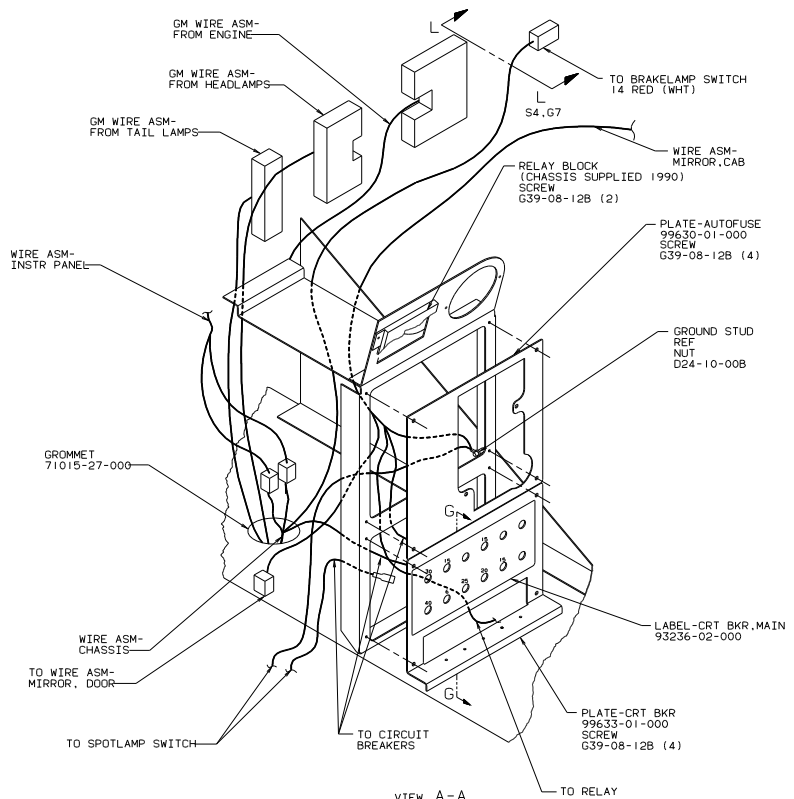
VIEW J-J SCALE: 1

CHEVY

90 M34RA

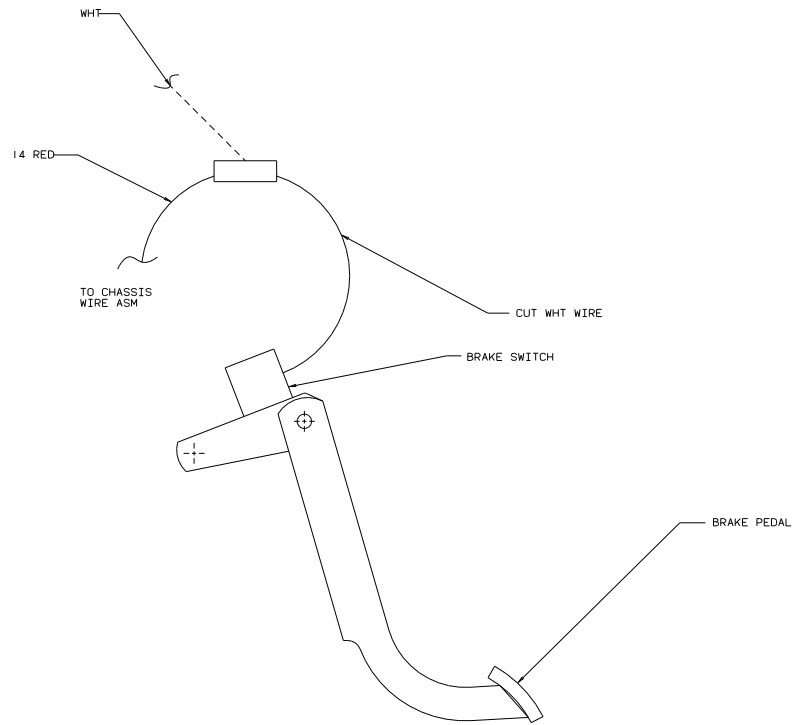
- 3 COVER AUX BATTERY CABLE AND TAIL LAMP WIRE ASM WITH CONDUIT 4195310-000 OR 4195311-000 AS REQUIRED.
- 2 USE TIE-WIRE (8343-02-000) EVERY 150 MM.
- 1 TAPE TO WIRE ASM WITH TAPE 8363-01-000 WHEN NOT USED

TITLE: WIRING INSTL-CHASSIS		REV	DATE
30 MET SCALE DRAWING	SHEET 2 OF 8	1 E	97113



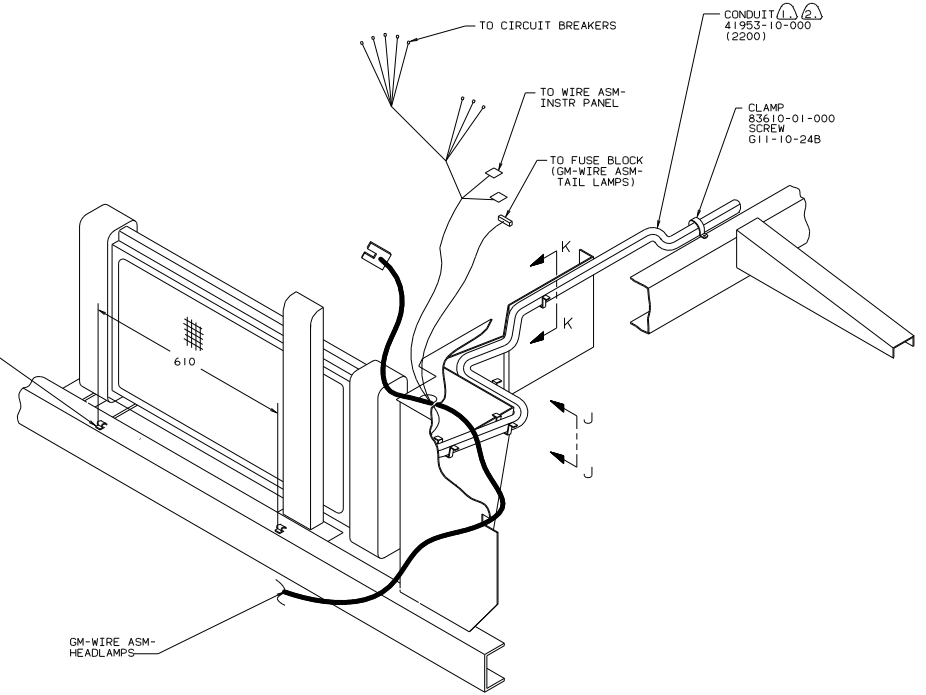
CHEVY
90 M34RA (RLC)

2 FOR ADDITIONAL INFORMATION, SEE WIRING INSTALLATION-FRONT END.
 1 TAPE TO WIRE ASM WITH TAPE 8363-01-000 WHEN NOT USED



VIEW L-L
SCALE: 0.6

CLAMP
83609-01-000(2)
SCREW
G32-10-14B(2)



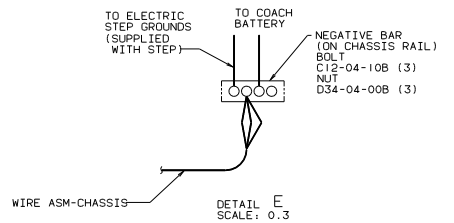
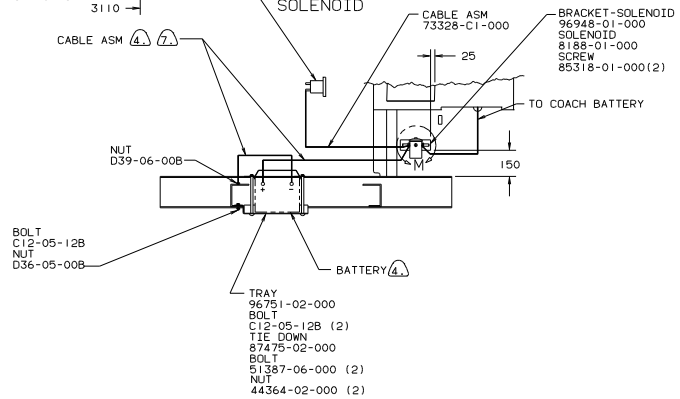
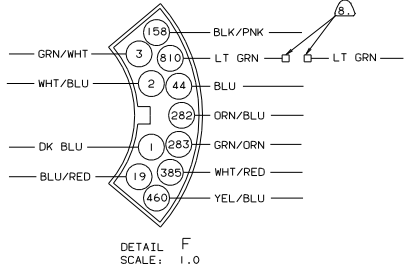
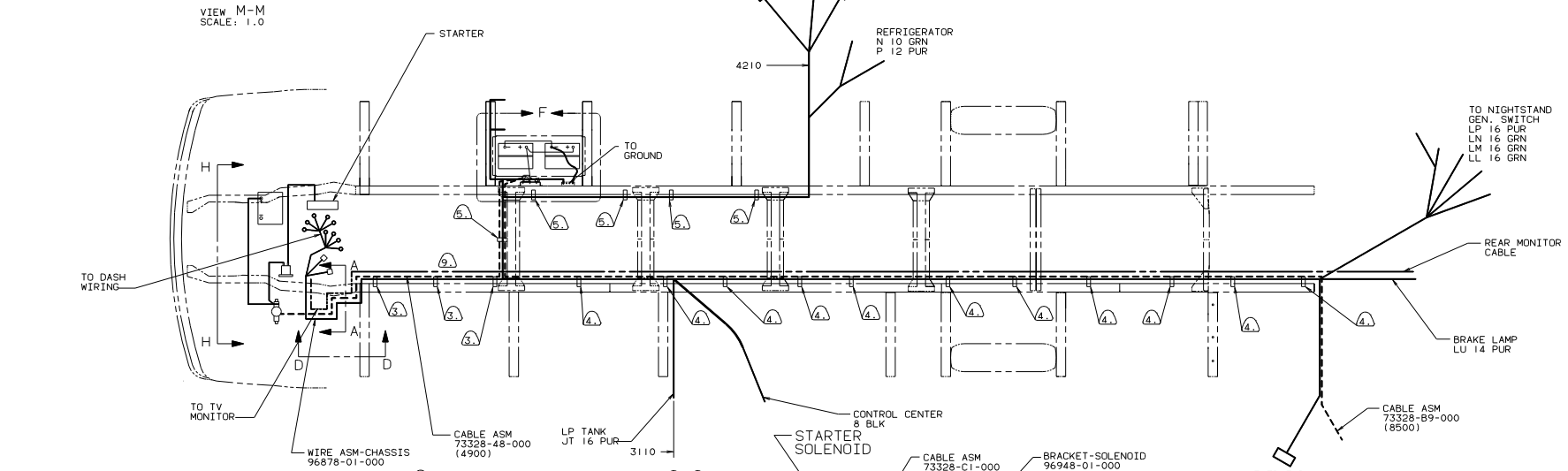
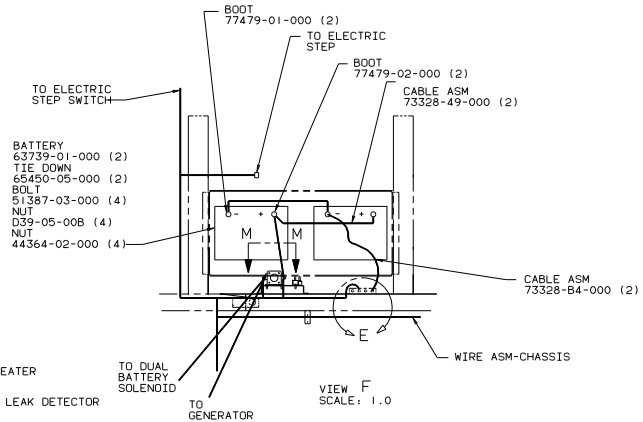
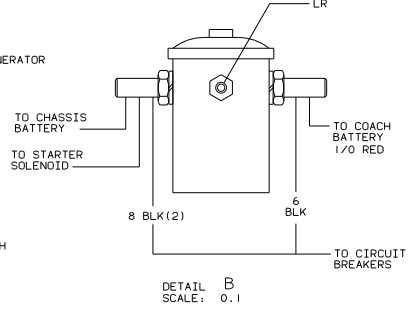
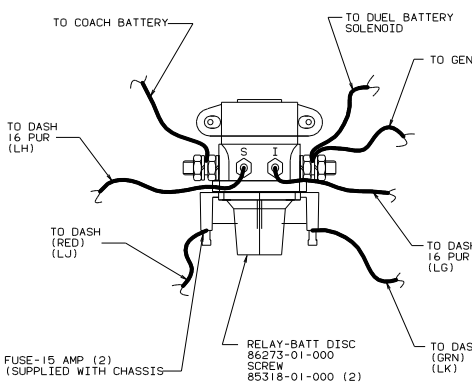
DETAIL D-D
SCALE: 0.25

- NOTES:
- COVER AUX BATTERY CABLE AND TAIL LAMP WIRE ASM WITH CONDUIT 4195310-000 OR 41953-11-000 AS REQUIRED.
 - USE TIE-WIRE (8343-02-000) EVERY 150 MM.

CHEVY

90 M34RA

TITLE: WIRING INSTL-CHASSIS		REV	DATE
30 NET SCALE Drawing	SHEET 4 of 8	1 E	NO
		97113	



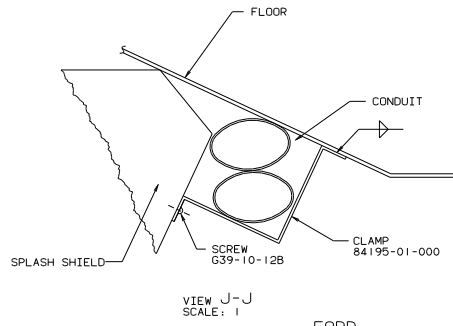
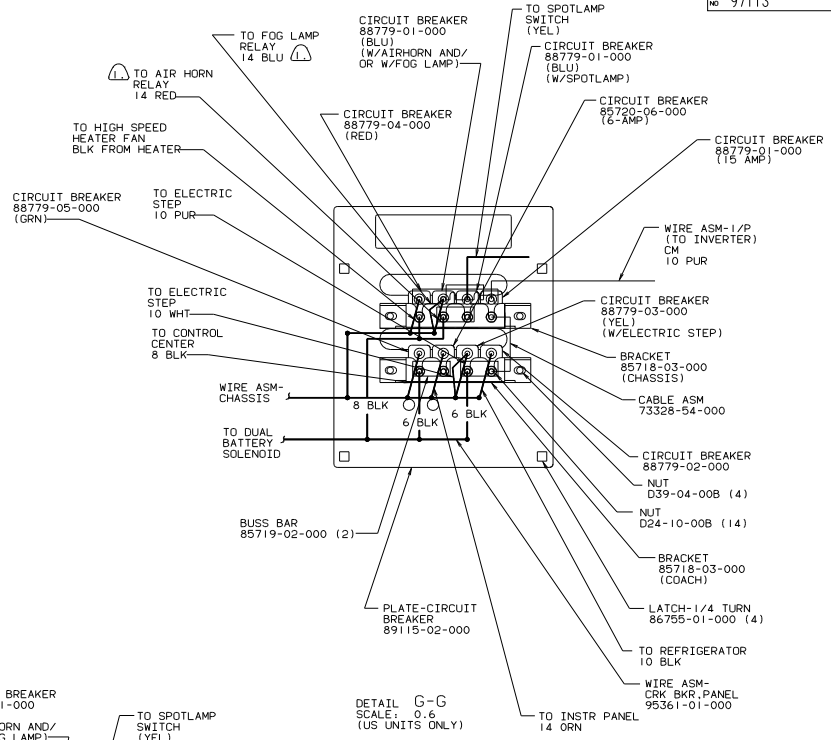
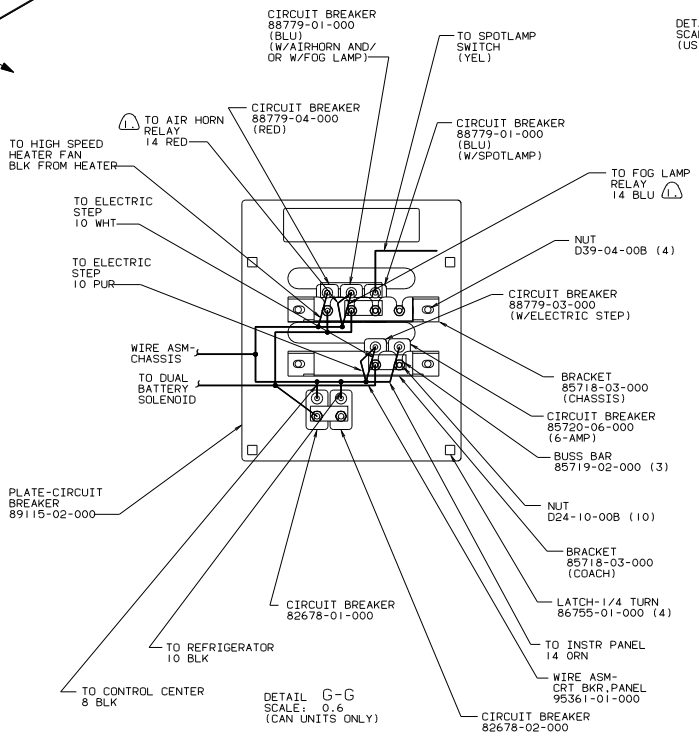
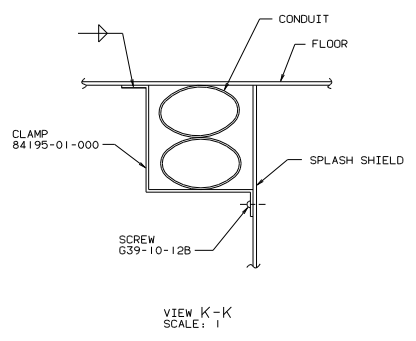
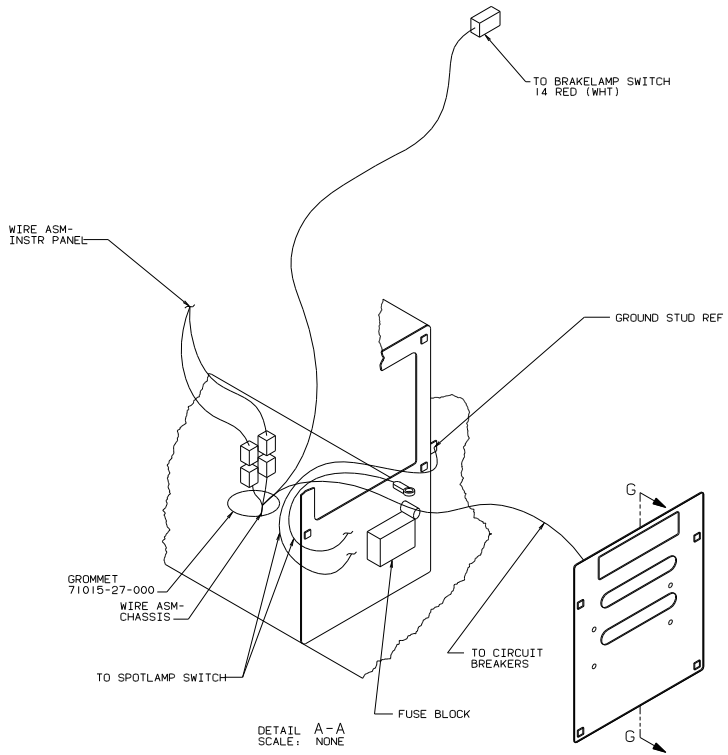
- (7) SUPPLIED WITH CHASSIS.
 - (6) BATTERY CABLE TO STARTER TO BE INSTALLED BEFORE ENGINE WIRING HARNESS AND ROUTED SO AS TO PREVENT DEGRADATION BY EXHAUST SYSTEM.
 - (5) CLAMP 10497-02-000(9), SCREW G11-10-24B(9).
 - (4) CLAMP 83610-01-000(2), BOLT G18-10-12B(2), NUT D24-10-00B(2)
 - (3) CLAMP 83610-02-000(11), SCREW G11-10-24B(11).
2. SECURE CONDUIT 41953-09-000, 41953-10-000 OR 41953-11-000 OVER ALL WIRES IN CONTACT WITH SHARP EDGES.
1. LEGEND: — WINNEBAGO WIRING, - - - CABLE.

- (9) DISCONNECT EXISTING FORD WIRE ASM-CHASSIS (NEAR TRANSMISSION) AND INSERT EXTENSION 98978-01-000.
- (8) CUT WIRE AND COVER WIRE ENDS WITH TAPE 8363-01-000.

FORD

90 W/ICM34RA

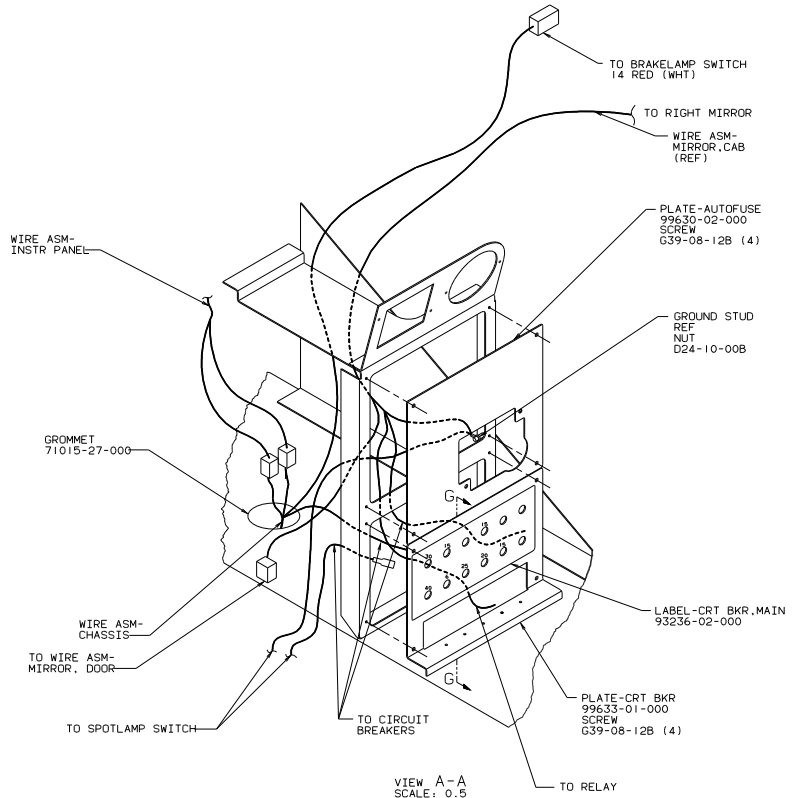
TITLE: WIRING INSTL-CHASSIS	
30 NET SCALE DRAWING	REV 1 E
SHEET 5 OF 8	97113



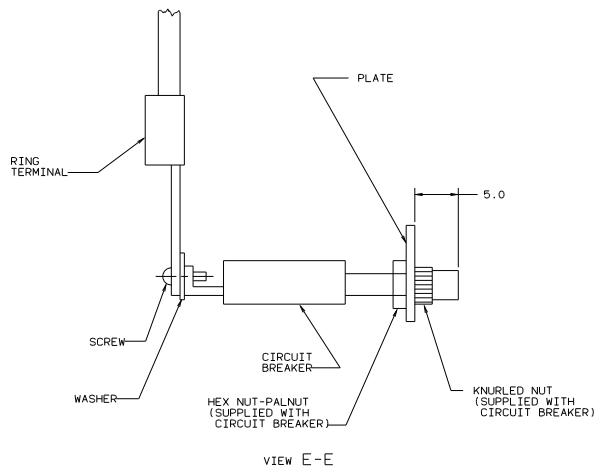
NOTES:

TAPE TO WIRE ASM WITH TAPE 8363-01-000 WHEN NOT USED

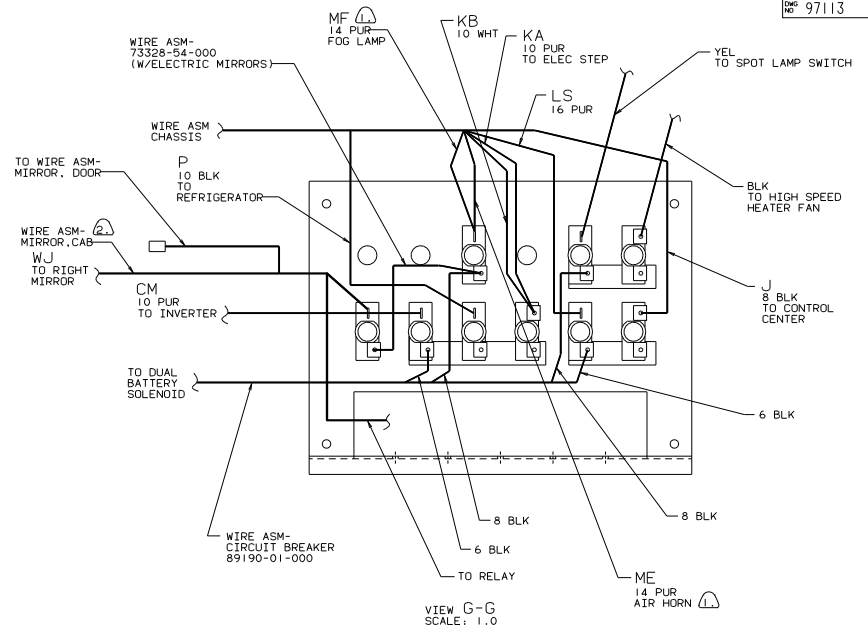
TITLE: WIRING INSTL-CHASSIS		
30 NET SCALE DRAWING	REV	DATE
SHEET 6 OF 8	1 E	97113



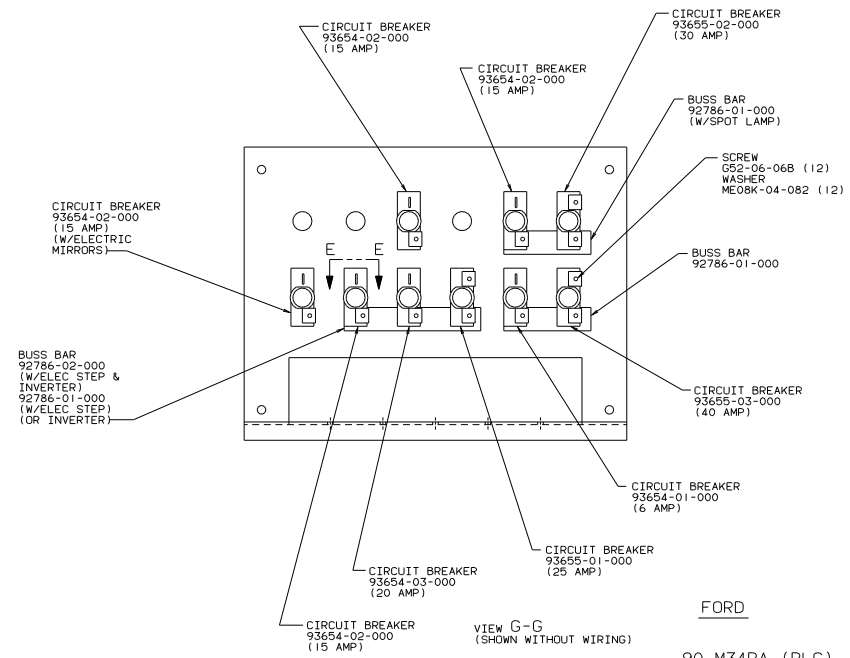
VIEW A-A
SCALE: 0.5



VIEW E-E

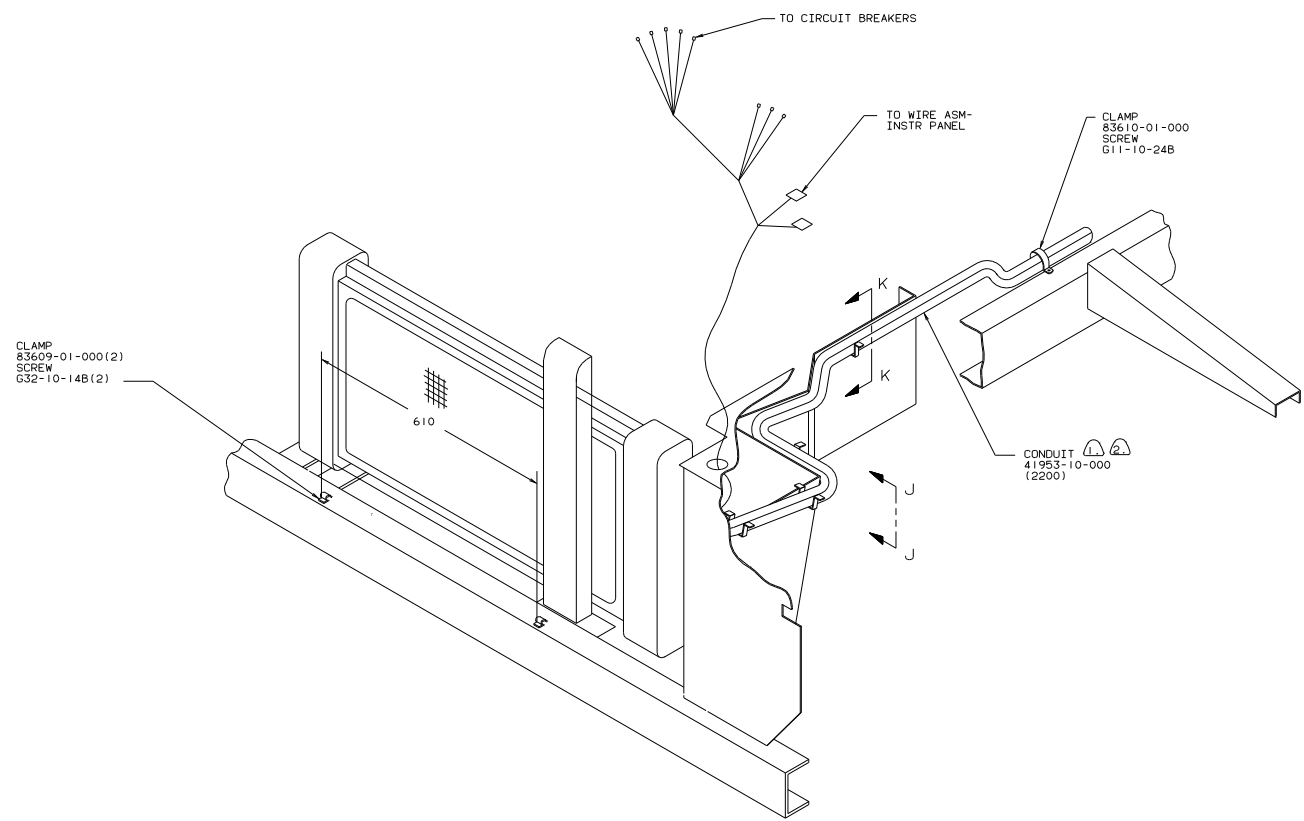


VIEW G-G
SCALE: 1.0



VIEW G-G
(SHOWN WITHOUT WIRING)

② FOR ADDITIONAL INFORMATION, SEE WIRING INSTALLATION-FRONT END.
 ⚠ TAPE TO WIRE ASM WITH TAPE 8363-01-000 WHEN NOT USED.



DETAIL D-D
SCALE: 0.3

- NOTES:
- Ⓐ COVER AUX BATTERY CABLE AND TAIL LAMP WIRE ASM WITH CONDUIT 4195310-000 OR 41953-11-000 AS REQUIRED.
 - Ⓒ USE TIE-WIRE (8343-02-000) EVERY 150 MM.

FORD

90 W/ICM34RA

TITLE: WIRING INSTL-CHASSIS		REV: 1		DWG NO: 97113	
30 MET SCALE Drawing	SHEET 8	OF 8	FILE NO		