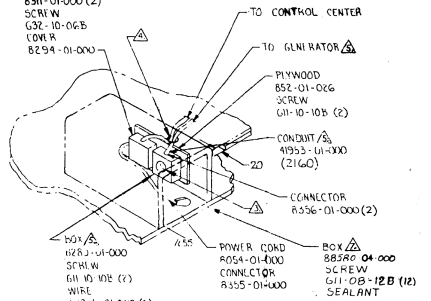


- BOX
828B-02-000
COVER
B4099-02-CHT
LABEL
91843-01-000
CONNECTOR
B313-01-000 (8)
COVER R/C
92433-01-CHT
- BOX
8289-01-000
SCREW
G11-10-10B (2)
WIRE
50235-01-000
(152)
TERMINAL
R32B-01-000
CONN CTOR
R314-01-000
CONNECTOR
R391-01-000 (2)
SCREW
G32-10-06B
COVER
8294-01-000



- BOX
8408B-01-000
RECP
84100-01-CHT
COVER
B4099-01-CHT
WIRE
50235-01-000
(150)
TERMINAL
832B-01-000

- WIRE
8027-01-000
(3200)

- ▲ ADD 13 Ø DRAIN HOLE IN BOTTOM CENTER NEAR SIDE AWAY FROM SIDEWALL.
- ▲ USE W/O ROOF AIR CONDITIONER
- ▲ USE WITH GENERATOR ONLY.

- ▲ SEAL WITH BEDDING³ COMPOUND 69639-01-000.
- ▲ INSTALL RECEPTACLE WITH GROUND TOWARD OUTBOARD SIDE¹ OF VEHICLE.

1. ALL 110V WIRES ARE TO BE CLAMPED WITH CLAMP 10495-01-000 EVERY 1220 MM
2. ALL 110V WIRES ARE TO BE CLAMPED WITH CLAMP 10497-05-000 WITHIN 203 MM OF OUTLET BOXES.

LEFT SIDE

LEGEND
 --- 110V WIRING
 - - - 12V WIRES

UNIT	SHEET
US	1,2,5,7
CAN	3,4,6,7

ALL DIMENSIONS ARE IN MILLIMETERS UNLESS OTHERWISE SPECIFIED

WINNEBAGO

DATE	REV	BY	REVISION NUMBER	DATE

W/WF226C

SCALE: NONE

SHEET 1 OF 7

REF 699-4

96258

CABLE ASM - COAXIAL
 87105-01-006
 WALL PLATE
 93252-01-CHT
 BUMPER
 69726-02-000 (A)
 ADAPTER
 76319-01-000 (A)
 ANTENNA
 76319-01-000 (A)
 CLIP WIRE
 80734-02-000 (A)

LIGHT
 98024-01-CHT (2)
 SCREW
 G11-08-20B (8)
 CONNECTOR
 58028-01-000 (4)

SUPPORT
 80531-02-CHT
 SCREWS
 667-10-12U(A)

STOVE VENT
 CONNECTOR
 50028-01-000 (4)

SWITCHPLATE
 98351-02-CHT
 SWITCH
 89308-01-CHT (2)
 SCREW
 G11-06-10J (2)

RECP-GALLEY
 06738-01-CHT
 BLOCK
 75723-01-000
 SCREW
 G39-08-14E (2)

ROOF
 WIRING

RECP
 86738-01-CHT

MONITOR
 PANEL (REF)

REFRIG RECP (A)
 58707-01-000

RECP-EXTERIOR
 79293-01-CHT
 BOX
 59099-01-000
 SCREW
 G11-08-70B (4)
 WIRE
 50035-01-000
 (C01)
 TERMINAL
 AS-8-14-000
 SCREW
 G32-10-C0B

DETECTOR-LP
 95812-01-000
 SCREW
 G13-06-08B (2)

FURNACE

SWITCH
 WATER HEATER
 97967-01-000

WIRE
 8026-01-000
 (1800)

WATER HEATER

REAR AUTO HEATER

FROM BATH RECP

CONDUIT
 41953-01-000
 (5000)

WIRE ASM -
 RIGHT SIDE
 96254-01-000
 WIRE ASM - MAIN HOLDING
 96450-04-000
 WIRE ASM - AUX HOLDING
 96451-04-000

SPEAKER - GRILLE
 90026-01-CHT (2)
 SPEAKER
 94097-01-000 (2)
 SCREW
 G13-06-12B (4)

SECTION A-A
 SCALE: NONE

- (A) LOCATE TO RETAIN CABLE BUT NOT RESTRICT TRAVEL OF ANTENNA.
- (A) SEE DWG 76319-01-000 FOR INSTALLATION OF ANTENNA.
- (A) ADAPTER SUPPLIED LOOSE IN VEHICLE.
- (A) LOCATE BUMPER UNDER ENDS OF ANTENNA ON ROOF.

(A) TAPE BRANCH BACK ALONG MAIN BODY OF WIRE ASM W/ TAPE 82463-01-000.

(A) LOCATE RECEPTACLE 350 ABOVE SHELF.

RIGHT SIDE

LEGEND

--- 110V WIRING

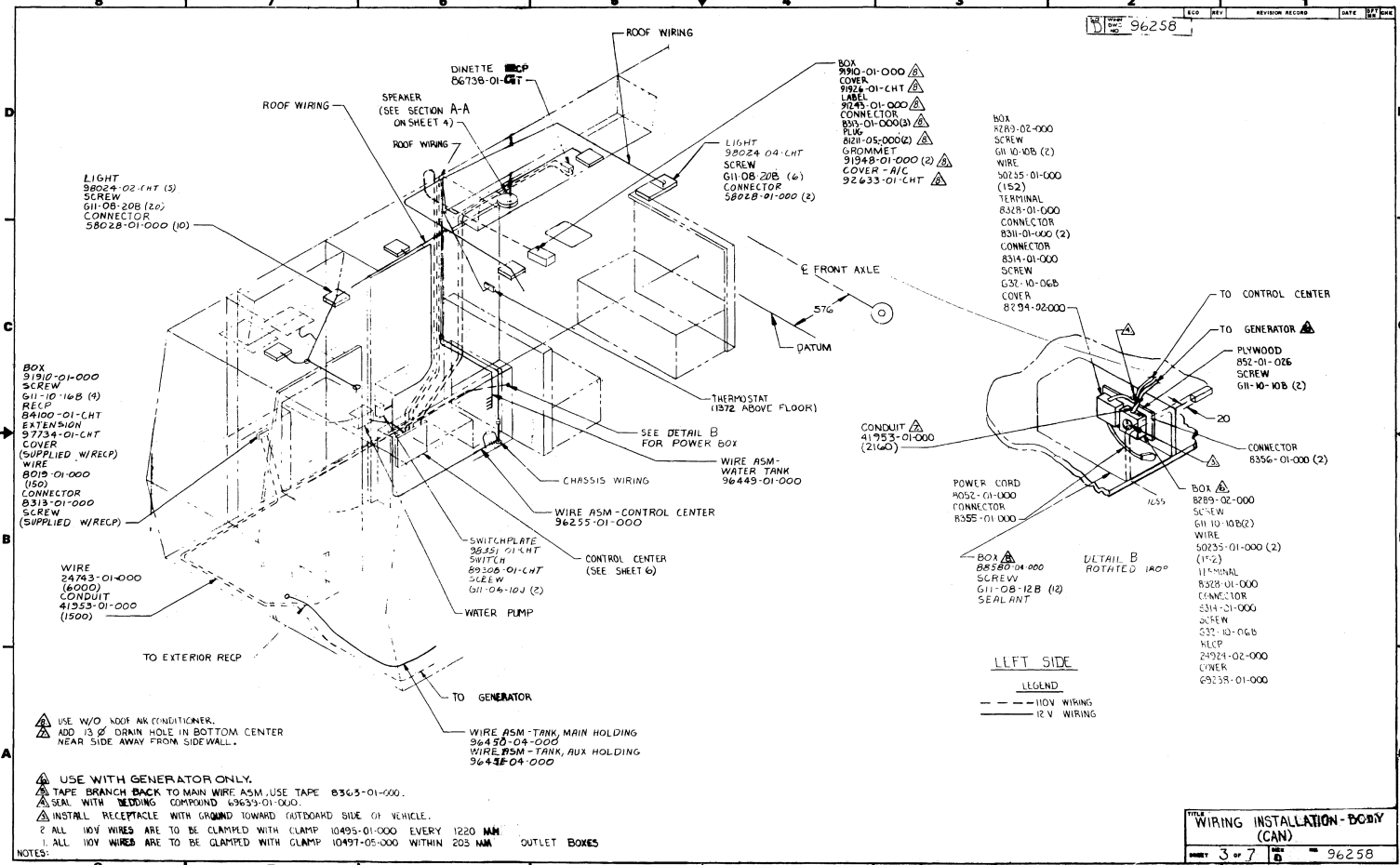
--- 12V WIRING

--- C CABLE ASM-ANTENNA

REV 96258

REV DATE

WIRING INSTALLATION - BODY (US)
 REV 96258



LIGHT
38024-02-LHT (3)
SCREW
G11-10-14B (4)
RECP
84100-01-LHT
EXTENSION
97734-01-LHT
COVER
(SUPPLIED W/RECP)
WIRE
B019-01-000
(150)
CONNECTOR
B313-01-000
SCREW
(SUPPLIED W/RECP)

BOX
91910-01-000
SCREW
G11-10-14B (4)
RECP
84100-01-LHT
EXTENSION
97734-01-LHT
COVER
(SUPPLIED W/RECP)
WIRE
B019-01-000
(150)
CONNECTOR
B313-01-000
SCREW
(SUPPLIED W/RECP)

WIRE
24763-01-000
(6000)
CONDUIT
41353-01-000
(1500)

TO EXTERIOR RECP

WIRE ASM-TANK MAIN HOLDING
96430-01-000
WIRE ASM-TANK AUX HOLDING
96434-01-000

LIGHT
38024-04-LHT
SCREW
G11-08-20B (6)
CONNECTOR
58028-01-000 (2)

BOX
91910-01-000
COVER
91926-01-LHT
LABEL
91245-01-000
CONNECTOR
6043-01-000(8)
FLUG
81211-05-000(2)
GROMMET
91949-01-000 (2)
COVER-A/C
92433-01-LHT

W/O
RTR9-02-000
SCREW
G11-10-10B (2)
WIRE
50255-01-000
(152)
TERMINAL
8328-01-000
CONNECTOR
B311-01-000 (2)
CONNECTOR
8314-01-000
SCREW
G32-10-06B
COVER
8294-02-000

CONDUIT
41353-01-000
(2160)

BOX
88580-04-000
SCREW
G11-08-12B (12)
SEALANT

DETAIL B
ROTATED 180°

POWER CORD
M052-01-000
CONNECTOR
B355-01-000

TO CONTROL CENTER
TO GENERATOR
PLYWOOD
B52-01-02B
SCREW
G11-10-10B (2)
CONNECTOR
B356-01-000 (2)

BOX
B289-02-000
SCREW
G11-10-10B(2)
WIRE
50255-01-000 (2)
(152)
TERMINAL
8328-01-000
CONNECTOR
B314-01-000
SCREW
G32-10-06B
RECP
24924-02-000
COVER
69238-01-000

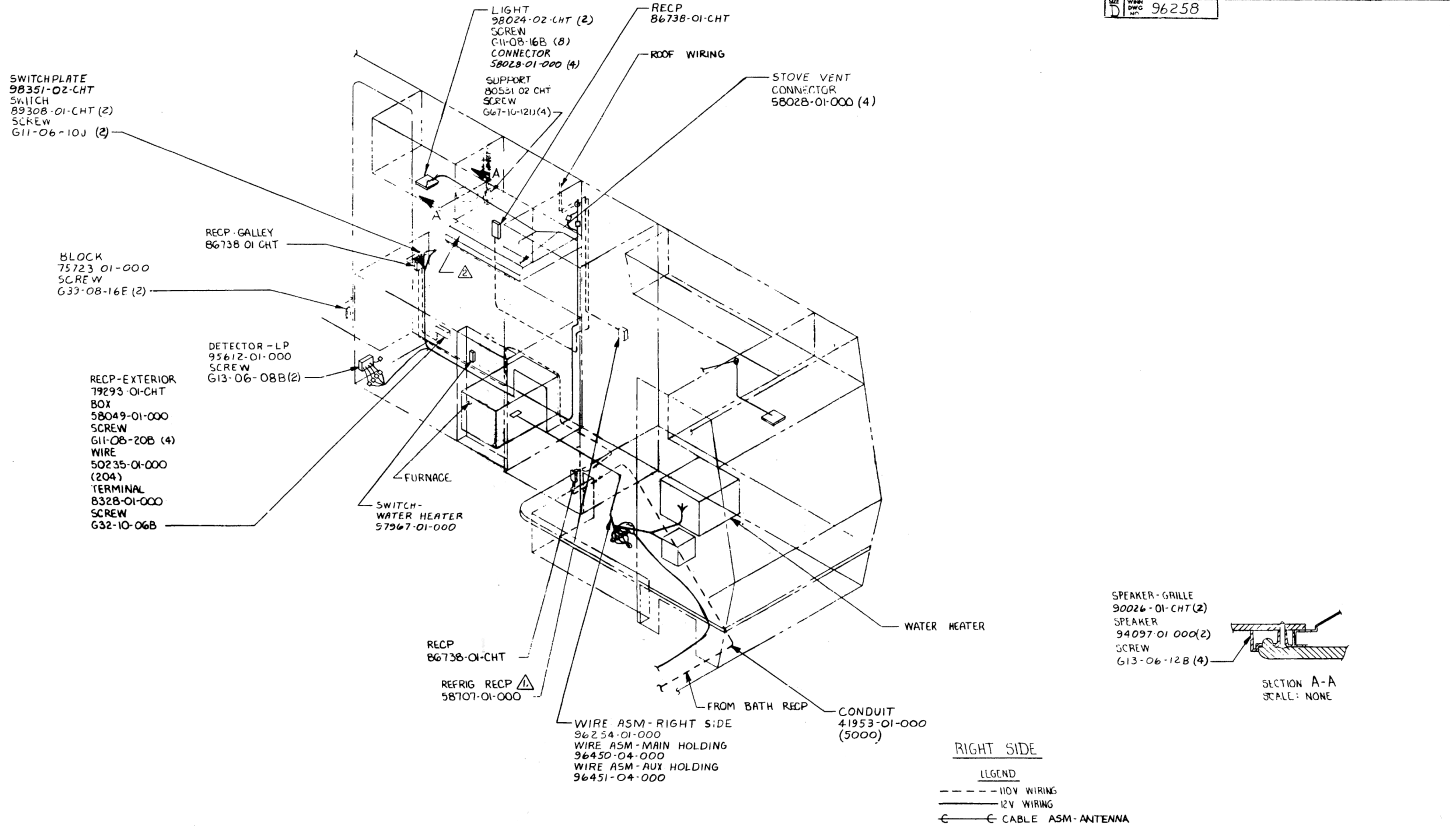
LEFT SIDE

LEGEND
--- 110V WIRING
— 12V WIRING

▲ USE W/O A/C OR AIR CONDITIONER.
ADD 1/8" DRAIN HOLE IN BOTTOM CENTER
NEAR SIDE AWAY FROM SIDEWALL.

▲ USE WITH GENERATOR ONLY.
▲ TAPE BRANCH BACK TO MAIN WIRE ASM, USE TAPE B363-01-000.
▲ SEAL WITH WEDDING COMPOUND 69633-01-000.
▲ INSTALL RECEPTACLE WITH GROUND TOWARD OUTBOARD SIDE OF VEHICLE.

NOTES:
1. ALL 110V WIRES ARE TO BE CLAMPED WITH CLAMP 10495-01-000 EVERY 1220 MM.
2. ALL 12V WIRES ARE TO BE CLAMPED WITH CLAMP 10497-05-000 WITHIN 203 MM OF OUTLET BOXES



SWITCHPLATE
58351-02-CHT
SWITCH
89308-01-CHT (2)
SCREW
G11-06-10J (2)

LIGHT
28024-02-CHT (2)
SCREW
C11-08-16B (8)
CONNECTOR
58028-01-000 (4)
SUPPORT
M0551-02-CHT
SCREW
G67-10-12U (4)

RECP
B6738-01-CHT
ROOF WIRING
STOVE VENT
CONNECTGR
58028-01-000 (4)

BLOCK
75723-01-000
SCREW
G33-08-16E (2)

RECP-GALLEY
B6738-01-CHT

DETECTOR-LP
95612-01-000
SCREW
G13-06-08B (2)

RECP-EXTERIOR
79293-01-CHT
BOX
58049-01-000
SCREW
G11-08-20B (4)
WIRE
50235-01-000
(204)
TERMINAL
8328-01-000
SCREW
G32-10-06B

FURNACE
SWITCH-
WATER HEATER
57967-01-000

RECP
B6738-01-CHT

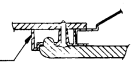
REFRIG RECP
58101-01-000

WIRE ASM-RIGHT SIDE
96254-01-000
WIRE ASM-MAIN HOLDING
96450-04-000
WIRE ASM-AUX HOLDING
96451-04-000

CONDUIT
41953-01-000
(5000)

WATER HEATER

SPEAKER-GRILLE
90026-01-CHT (2)
SPEAKER
94097-01-000 (2)
SCREW
G13-06-12B (4)



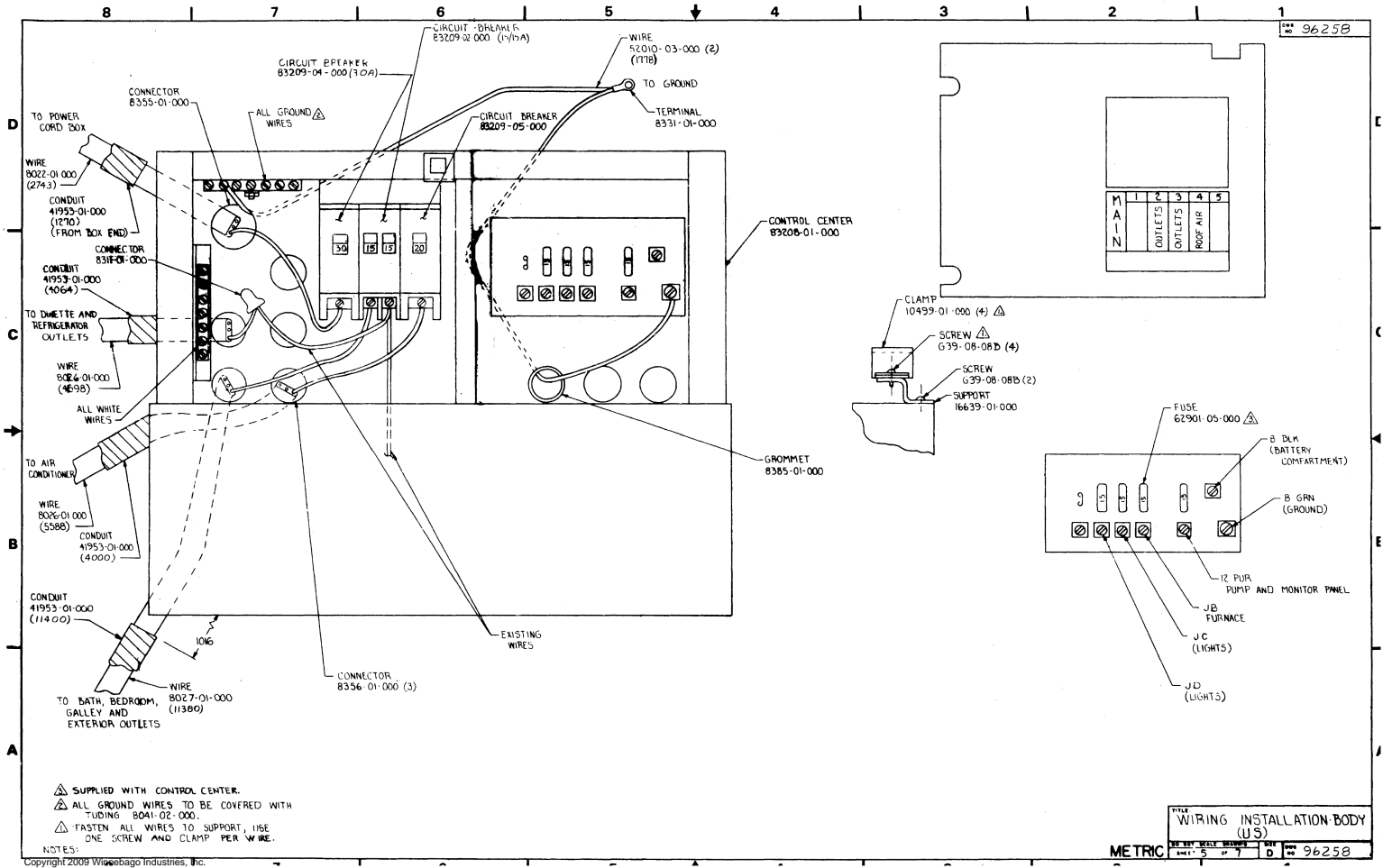
SECTION A-A
SCALE: NONE

RIGHT SIDE

- LEGEND
 - - - - - 110V WIRING
 ———— 12V WIRING
 ← ← ← CABLE ASM-ANTENNA

2. REMOVE SWITCH WITH MANUAL IGNITION WATER HEATER AND
 REPLACE WITH SWITCH 77942-01-000. CUT TERMINALS FROM
 SWITCH WIRES AND TAPE ENDS WITH TAPE 8363-01-000.
 2.1. LOCATE RECEPTACLE 350 ABOVE SHELF.

NOTES:

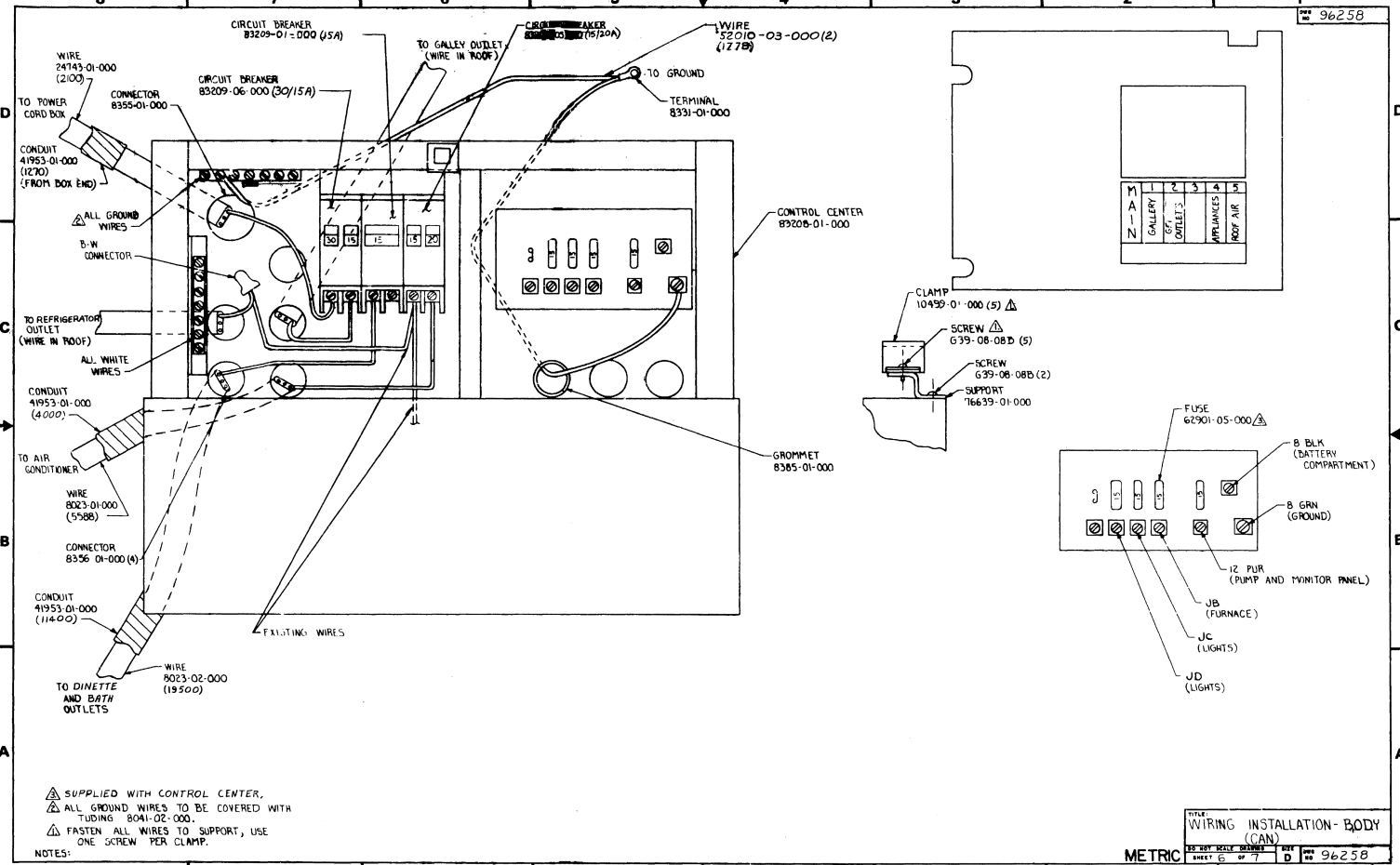


D
C
B
A

- ▲ SUPPLIED WITH CONTROL CENTER.
- ▲ ALL GROUND WIRES TO BE COVERED WITH TUBING 8041-02-000.
- ▲ FASTEN ALL WIRES TO SUPPORT, USE ONE SCREW AND CLAMP PER WIRE.

NOTES:
Copyright 2009 Wipacago Industries, Inc.

WIRING INSTALLATION BODY (U.S.)

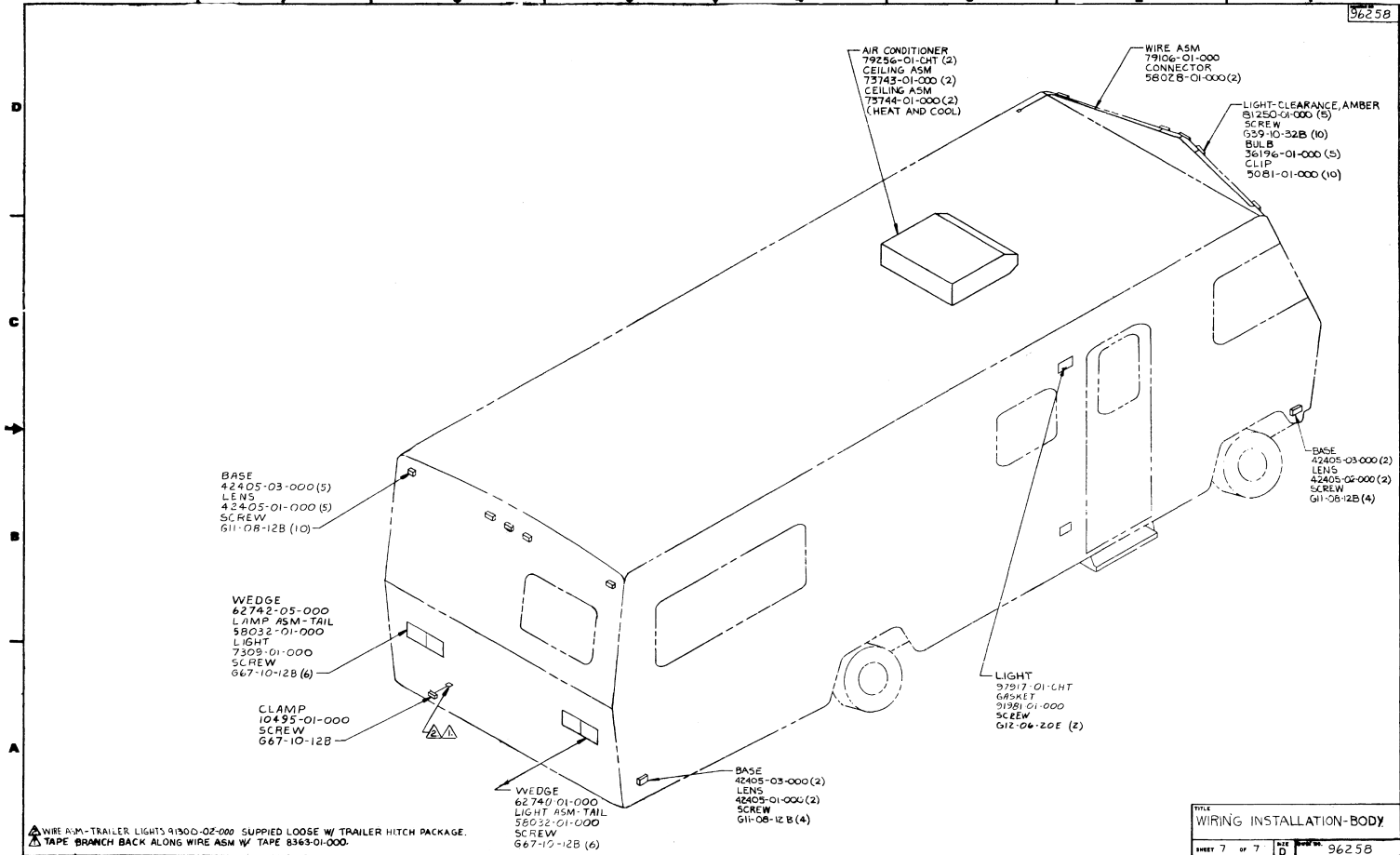


▲ SUPPLIED WITH CONTROL CENTER.
 ▲ ALL GROUND WIRES TO BE COVERED WITH TUBING 8041-02-000.
 ▲ FASTEN ALL WIRES TO SUPPORT, USE ONE SCREW PER CLAMP.

NOTES:

TITLE: WIRING INSTALLATION - BODY (CAN)
 83 REV 5 of 7
 D 96258

METRIC
 SHEET 5 of 7
 96258



AIR CONDITIONER
79256-01-000 (2)
CEILING ASM
73743-01-000 (2)
CEILING ASM
73744-01-000 (2)
(HEAT AND COOL)

WIRE ASM
79106-01-000
CONNECTOR
58028-01-000 (2)

LIGHT-CLEARANCE, AMBER
81250-01-000 (5)
SCREW
639-10-32B (10)
BULB
36196-01-000 (5)
CLIP
5081-01-000 (10)

BASE
42405-03-000 (5)
LENS
42405-01-000 (5)
SCREW
611-08-12B (10)

BASE
42405-03-000 (2)
LENS
42405-01-000 (2)
SCREW
611-08-12B (4)

WEDGE
62742-05-000
LAMP ASM-TAIL
58032-01-000
LIGHT
7309-01-000
SCREW
667-10-12B (6)

CLAMP
10495-01-000
SCREW
667-10-12B

LIGHT
97917-01-000
GASLET
91781-01-000
SCREW
612-06-20E (2)

WEDGE
62740-01-000
LIGHT ASM-TAIL
58032-01-000
SCREW
667-10-12B (6)

BASE
42405-03-000 (2)
LENS
42405-01-000 (2)
SCREW
611-08-12B (4)

WIRE ASM-TRAILER LIGHTS 91300-02-000 SUPPLIED LOOSE W/ TRAILER HITCH PACKAGE.
TAPE BRANCH BACK ALONG WIRE ASM W/ TAPE 8363-01-000.

TITLE		96258	
WIRING INSTALLATION-BODY			
DRAWING	7	OF	7
SIZE	D	REV	