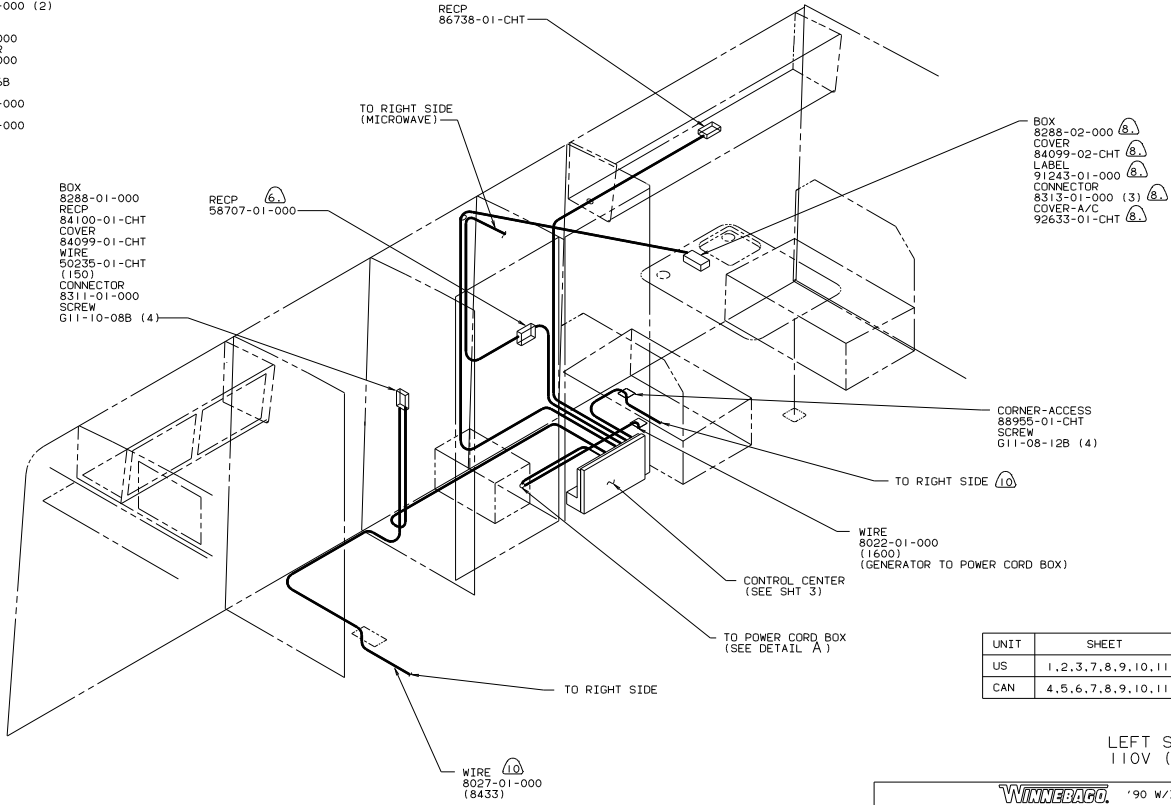


DETAIL A
 SCALE: .20
 (ROTATED 180°)



- ① APPLY CONDUIT HERE.
 - ⑩ ROUTED IN FLOOR.
 - ② USE WITH GENERATOR ONLY.
 - ③ USE WITHOUT ROOF AIR CONDITIONER.
 - ⑦ ADD 13 DIA DRAIN HOLE IN BOTTOM CENTER NEAR SIDE AWAY FROM SIDEWALL.
 - ⑥ LOCATE TOP OF REFRIGERATOR RECEPTACLE 350 ABOVE SHELF.
 - ⑤ SEAL WITH BEDDING COMPOUND 69639-01-000.
 - ④ INSTALL RECEPTACLE WITH GROUND TOWARD OUTBOARD SIDE OF VEHICLE.
3. ALL GROUND WIRES TO BE COVERED WITH TUBING 8041-02-000.
2. ALL WIRES ARE TO BE CLAMPED WITH CLAMP 10497-05-000 WITHIN 200 OF OUTLET BOXES. USE SCREW G67-10-12B.
1. ALL WIRE TO BE CLAMPED WITH CLAMP 10495-01-000 OR CLIP 80734-01-000 EVERY 600. USE SCREW G67-10-12B UNLESS OTHERWISE SPECIFIED.

- ⑥ BOX 8288-02-000
- ⑥ COVER 84099-02-CHT
- ⑥ LABEL 91243-01-000
- ⑥ CONNECTOR 8313-01-000 (3)
- ⑥ COVER-A/C 92633-01-CHT

- ⑩ CORNER-ACCESS 88955-01-CHT
- ⑩ SCREW G11-08-12B (4)

UNIT	SHEET
US	1, 2, 3, 7, 8, 9, 10, 11
CAN	4, 5, 6, 7, 8, 9, 10, 11

LEFT SIDE
 110V (US)

WINNEBAGO '90 W/ICF27EU

UNSPECIFIED TOLERANCES ARE: MATERIAL

OPTN	WALL DIA (R)	+
CHRP	ONE-PLATE (R, X)	+
FRP	TWO-PLATE (R, X)	+
FRS	WALL	+
CDR	TRUSS W/ANGLE PROJECTION	+

WIRING INSTL-BODY

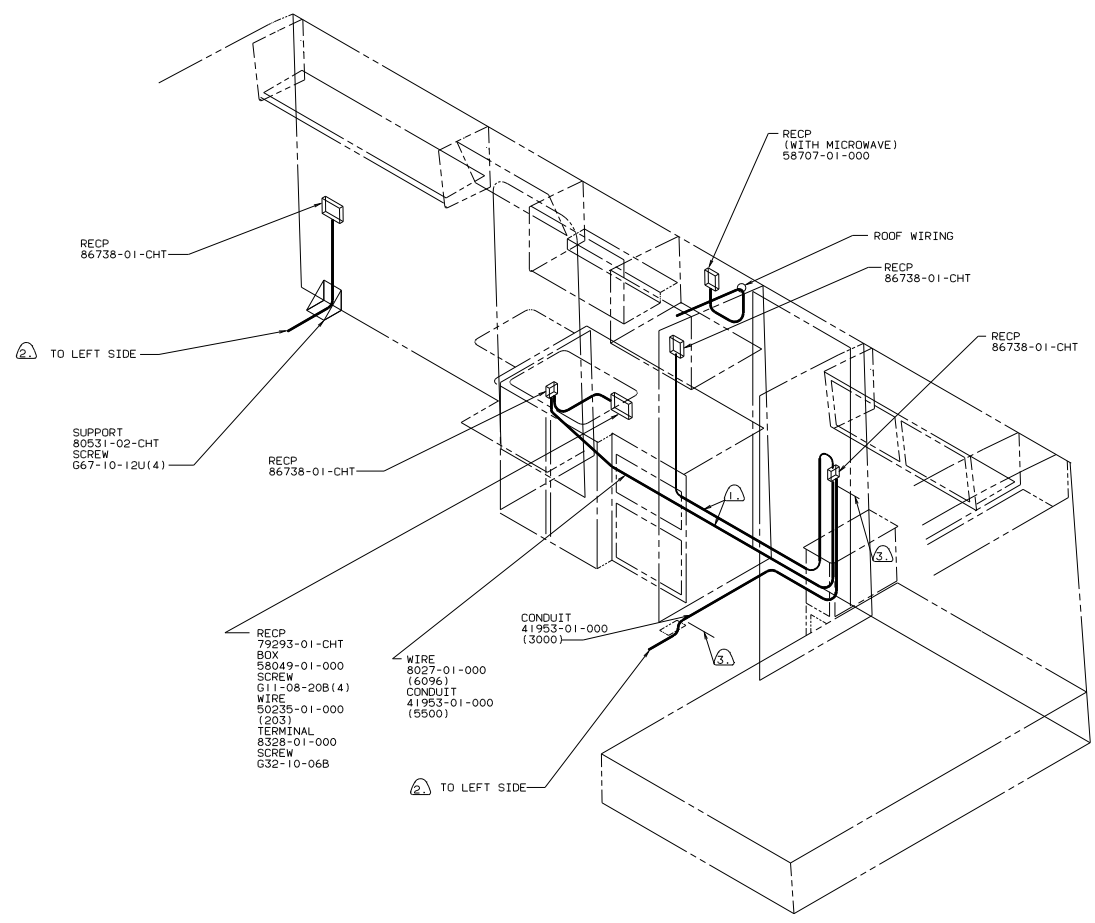
DATE: 11/11/00

SCALE: NONE

NO. SHEETS: 11

SHEET: 11

95798



- RECP 79293-01-CHT
- BOX
- 58049-01-000
- SCREW
- G11-08-20B(4)
- WIRE
- 50235-01-000
- (203)
- TERMINAL
- 8328-01-000
- SCREW
- G67-10-06B

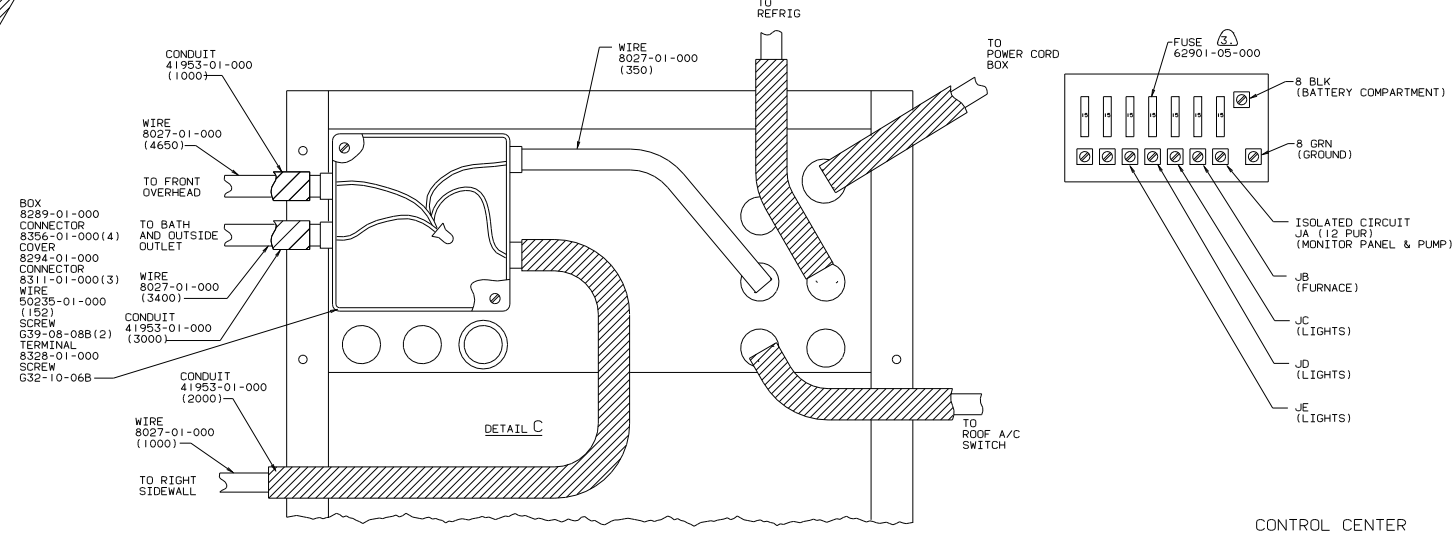
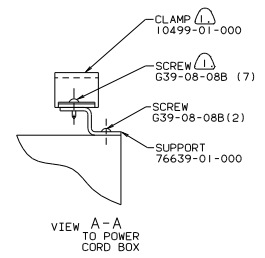
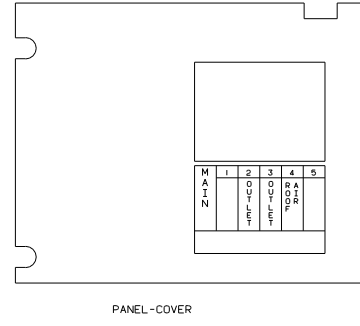
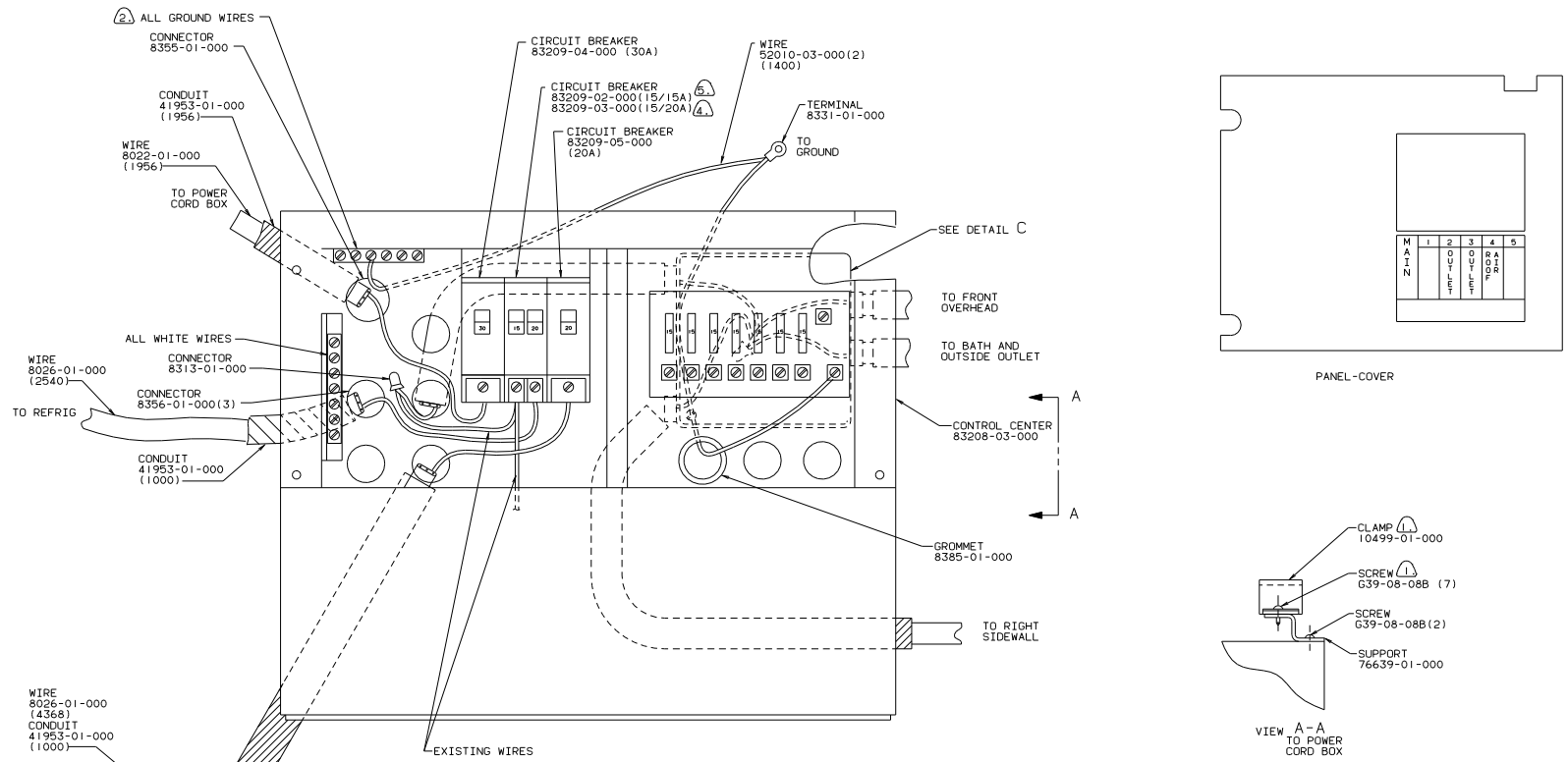
- WIRE
- 8027-01-000
- (6096)
- CONDUIT
- 41953-01-000
- (5500)

- 1 APPLY CONDUIT HERE.
- 2 ROUTED IN FLOOR.
- 3 CLAMP WIRES WITH CLAMP 83609-01-000 AND SCREW G11-08-12B EVERY 600.

NOTES:

RIGHT SIDE
110V (US)

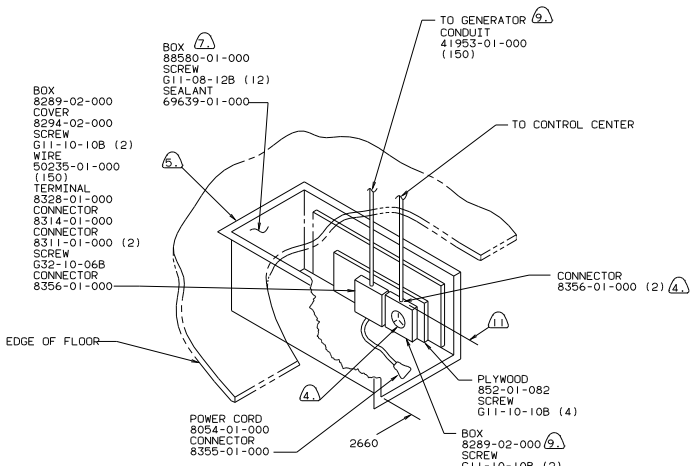
TITLE: WIRING INSTL-BODY	
30 NET SCALE DRAWING	FILE NO: 95798
SHEET 2 OF 11	1 E



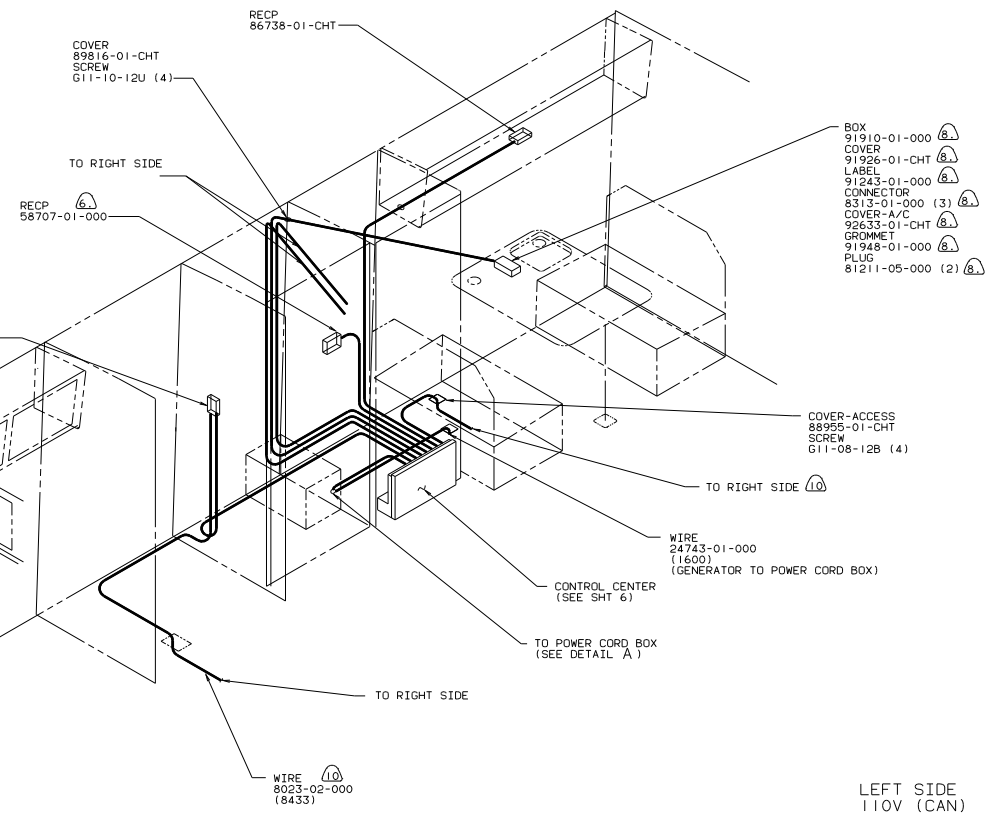
- ⑤ USE WITHOUT MICROWAVE.
- ④ USE WITH MICROWAVE.
- ③ SUPPLIED WITH CONTROL CENTER.
- ② ALL GROUND WIRES TO BE COVERED WITH TUBING 8041-02-000.
- ① FASTEN ALL WIRES TO SUPPORT, USE ONE SCREW PER CLAMP.

CONTROL CENTER

TITLE		WIRING INSTALLATION-BODY(US)	
DO NOT SCALE DRAWING	SHEET	1	1
	OF	1	1
DWG NO		95798	



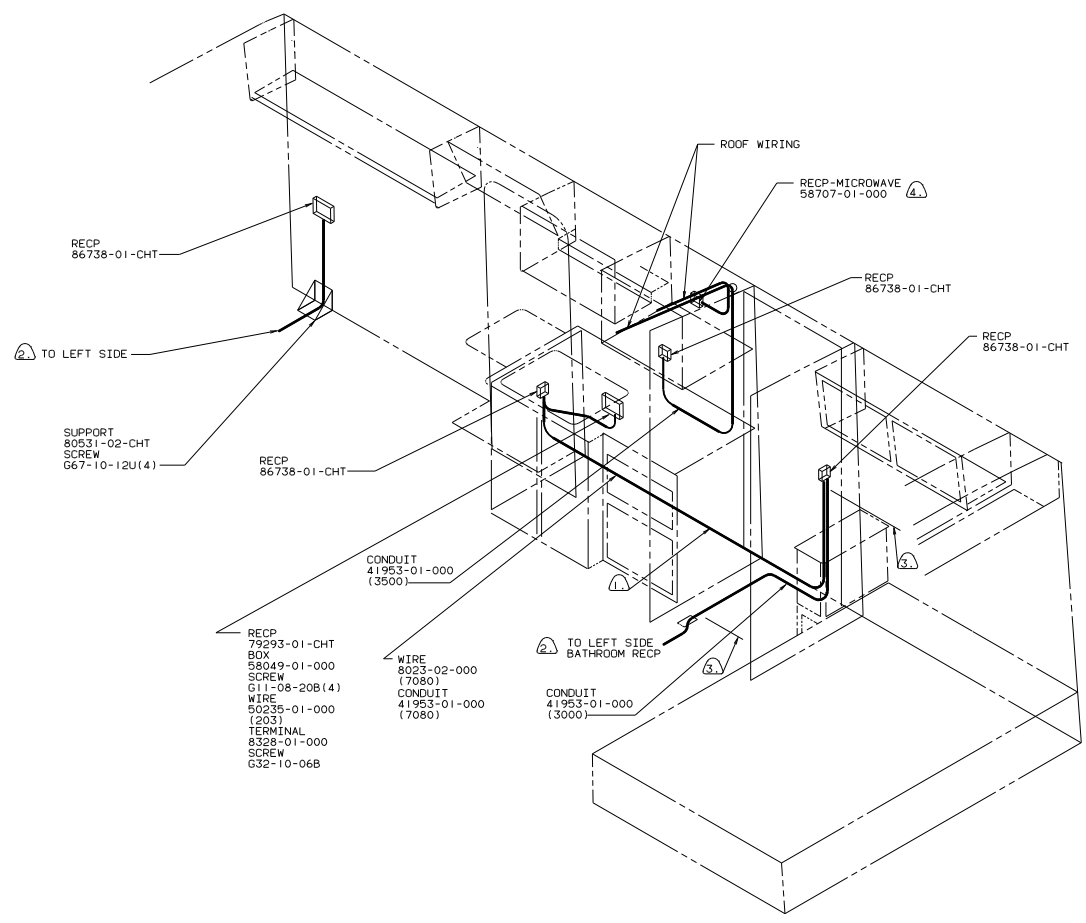
DETAIL A
SCALE: .20
(ROTATED 180°)



LEFT SIDE
110V (CAN)

- (1) APPLY CONDUIT HERE.
 - (10) ROUTED IN FLOOR.
 - (9) USE WITH GENERATOR ONLY.
 - (8) USE WITHOUT ROOF AIR CONDITIONER.
 - (7) ADD 13 DIA DRAIN HOLE IN BOTTOM CENTER NEAR SIDE AWAY FROM SIDEWALL.
 - (6) LOCATE TOP OF REFRIGERATOR RECEPTACLE 350 ABOVE SHELF.
 - (5) SEAL WITH BEDDING COMPOUND 69639-01-000.
 - (4) INSTALL RECEPTACLE WITH GROUND TOWARD OUTBOARD SIDE OF VEHICLE.
3. ALL GROUND WIRES TO BE COVERED WITH TUBING 8041-02-000.
2. ALL WIRES ARE TO BE CLAMPED WITH CLAMP 10497-05-000 WITHIN 200 OF OUTLET BOXES. USE SCREW G67-10-12B.
1. ALL WIRE TO BE CLAMPED WITH CLAMP 10495-01-000 OR CLIP 80734-01-000 EVERY 600. USE SCREW G67-10-12B UNLESS OTHERWISE SPECIFIED.

NOTES:



RECIP 86738-01-CHT

TO LEFT SIDE

SUPPORT 80531-02-CHT SCREW 667-10-12U(4)

RECIP 86738-01-CHT

CONDUIT 41953-01-000 (3500)

RECIP 79293-01-CHT BOX 58049-01-000 SCREW G11-08-20B(4) WIRE 50235-01-000 (203) TERMINAL 8328-01-000 SCREW G32-10-06B

WIRE 8025-02-000 (7080) CONDUIT 41953-01-000 (7080)

TO LEFT SIDE BATHROOM RECP

CONDUIT 41953-01-000 (3000)

RECIP-MICROWAVE 58707-01-000

RECIP 86738-01-CHT

RECIP 86738-01-CHT

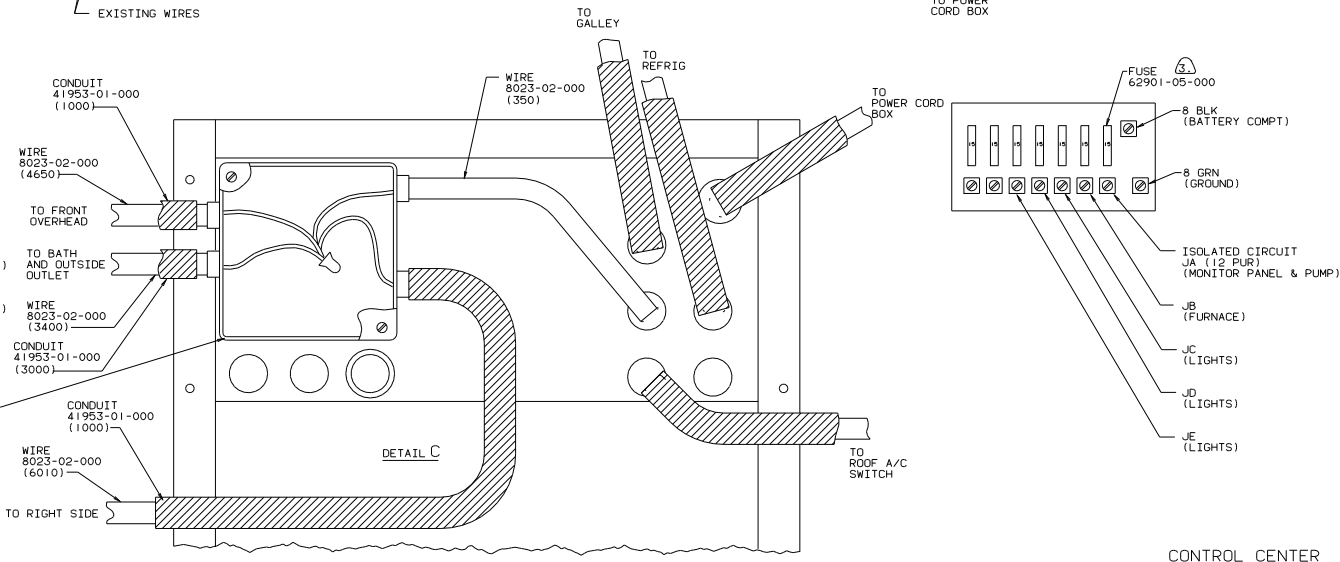
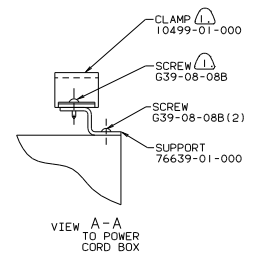
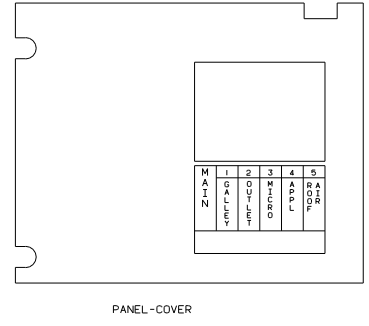
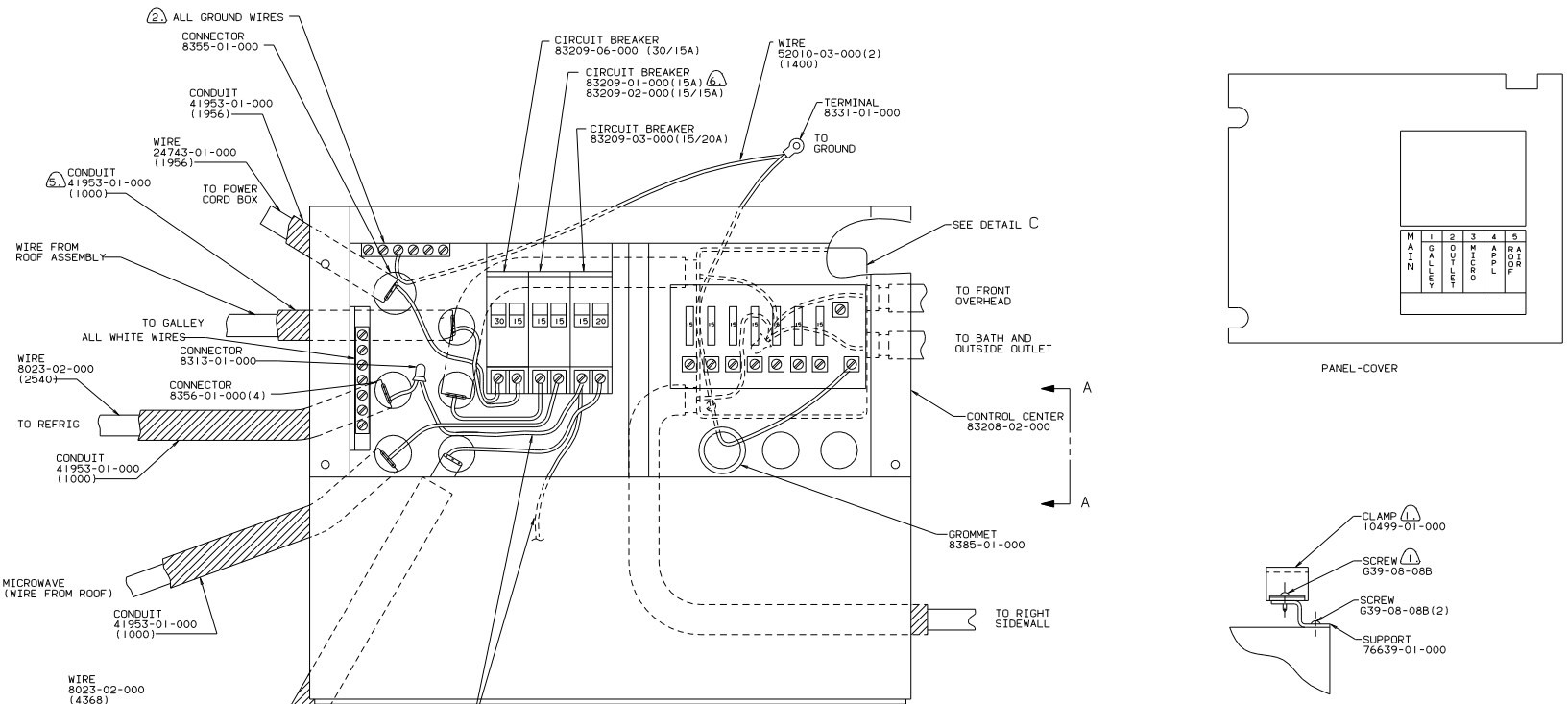
ROOF WIRING

- ④ USE WITH MICROWAVE.
- ③ APPLY CONDUIT HERE.
- ② ROUTED IN FLOOR.
- ① CLAMP WIRES WITH CLAMP 83609-01-000 AND SCREW G11-08-12B EVERY 600.

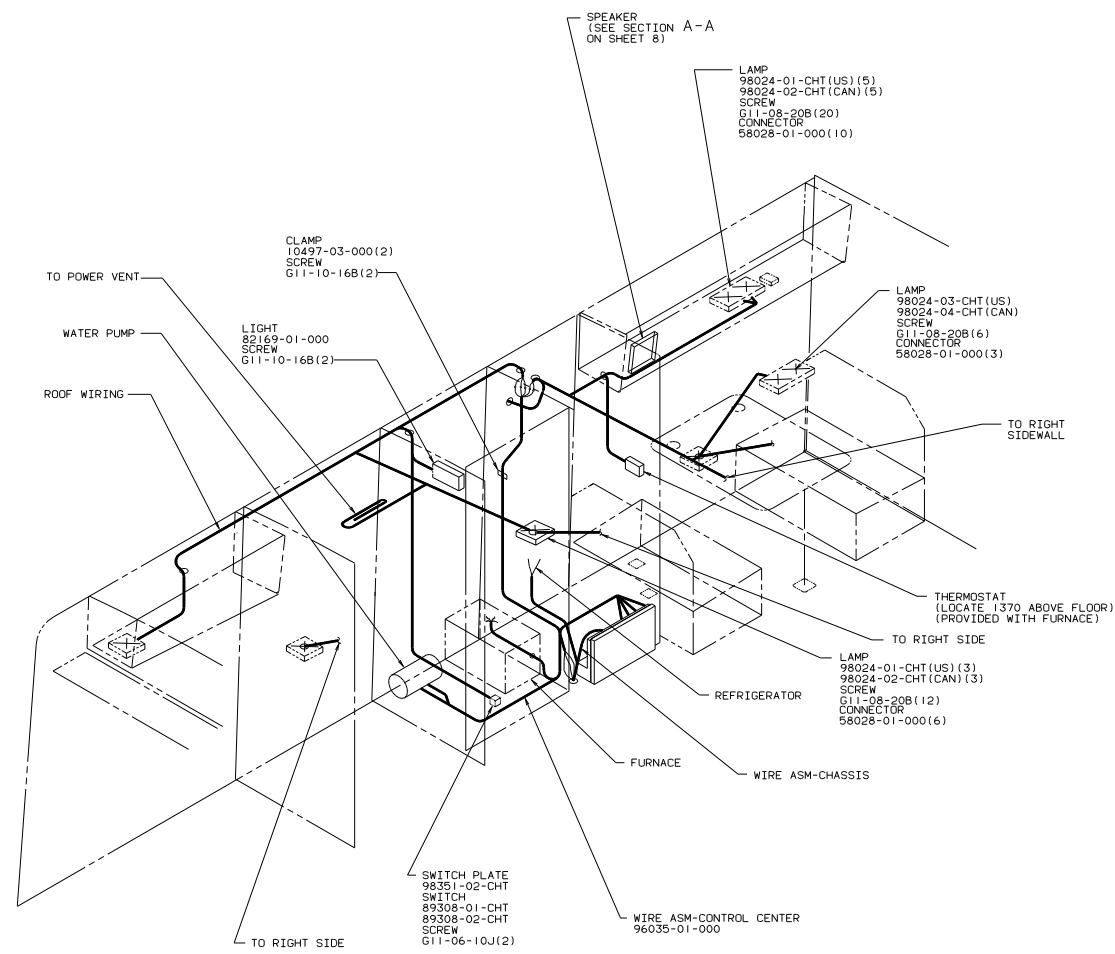
NOTES:

RIGHT SIDE 110V (CAN)

TITLE: WIRING INSTL-BODY	
30 NET SCALE DRAWING	FILE NO 95798
SHEET 5 of 11	1 of 1



- ⑥ USED WITH MICROWAVE ONLY.
- ⑤ INSTALL DURING WIRE INSTALLATION TO CONTROL CENTER.
- ④ LONG WHITE WIRE, WITH COILS, CONNECTS TO NEUTRAL BAR; WHITE WIRE, FROM CIRCUIT, CONNECTS TO SCREW TERMINAL ON NEUTRAL SIDE OF GROUND FAULT INTERRUPTER; BLACK WIRE, FROM CIRCUIT, CONNECTS TO SCREW TERMINAL ON LOAD SIDE OF GROUND FAULT INTERRUPTER.
- ③ SUPPLIED WITH CONTROL CENTER.
- ② ALL GROUND WIRES TO BE COVERED WITH TUBING 8041-02-000.
- ① FASTEN ALL WIRES TO SUPPORT, USE ONE SCREW PER CLAMP.



CLAMP
10497-03-000(2)
SCREW
G11-10-16B(2)

LIGHT
82169
SCREW
G11-10-16B(2)

SPEAKER
(SEE SECTION A-A
ON SHEET 8)

LAMP
98024-01-CHT(US)(5)
98024-02-CHT(CAN)(5)
SCREW
G11-08-20B(20)
CONNECTOR
58028-01-000(10)

LAMP
98024-03-CHT(US)
98024-04-CHT(CAN)
SCREW
G11-08-20B(6)
CONNECTOR
58028-01-000(3)

LAMP
98024-01-CHT(US)(3)
98024-02-CHT(CAN)(3)
SCREW
G11-08-20B(12)
CONNECTOR
58028-01-000(6)

SWITCH PLATE
98351-02-CHT
SWITCH
89308-01-CHT
89308-02-CHT
SCREW
G11-06-10J(2)

WIRE ASM-CONTROL CENTER
96035-01-000

REFRIGERATOR

FURNACE

WIRE ASM-CHASSIS

THERMOSTAT
(LOCATE 1370 ABOVE FLOOR)
(PROVIDED WITH FURNACE)

TO RIGHT
SIDEWALL

TO RIGHT
SIDE

TO RIGHT
SIDE

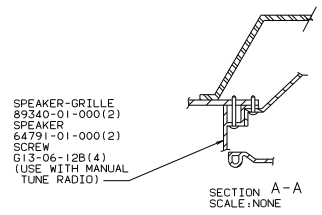
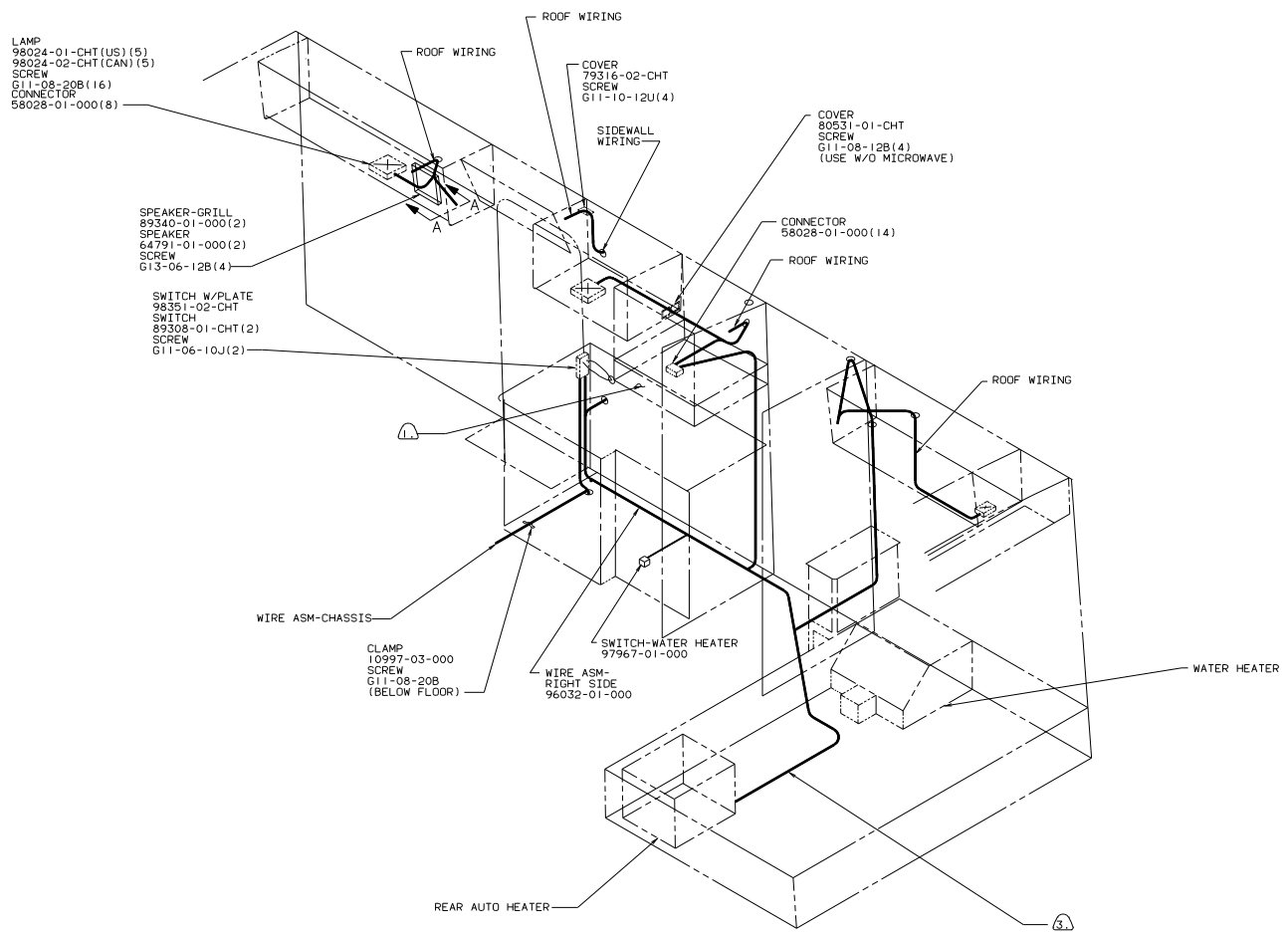
TO POWER VENT

WATER PUMP

ROOF WIRING

LEFT SIDE
12V (US/CAN)

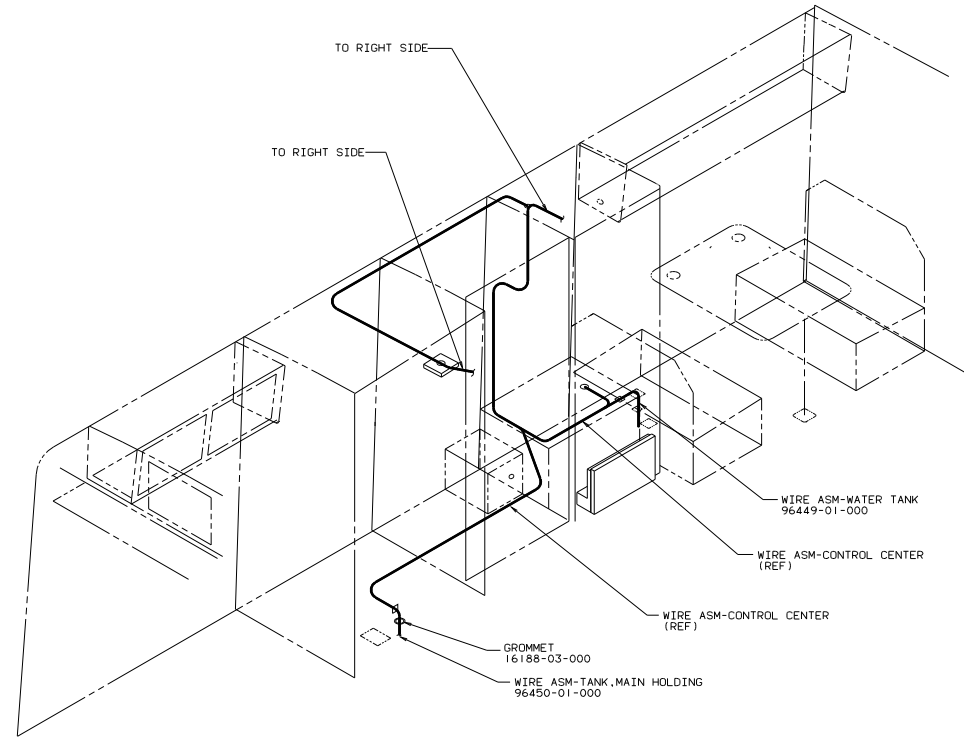
TITLE: WIRING INSTL-BODY	
30 NET SCALE DRAWING	FILE NO 95798
SHEET 7	OF 11



- NOTES:
- CLAMP WIRES WITH CLAMP 83609-01-000 AND SCREW G11-08-12B EVERY 600.
 - ALL LIGHTS TO BE CONNECTED TO WIRE ASSEMBLIES WITH CONNECTOR 58028-01-000 UNLESS SPLICE IS PROVIDED ON WIRE ASSEMBLY.
 - REMOVE SWITCH WITH MANUAL IGNITION WATER HEATER AND REPLACE WITH SWITCH 77942-01-000. CUT TERMINALS FROM SWITCH WIRES AND TAPE ENDS WITH TAPE 8363-01-000.

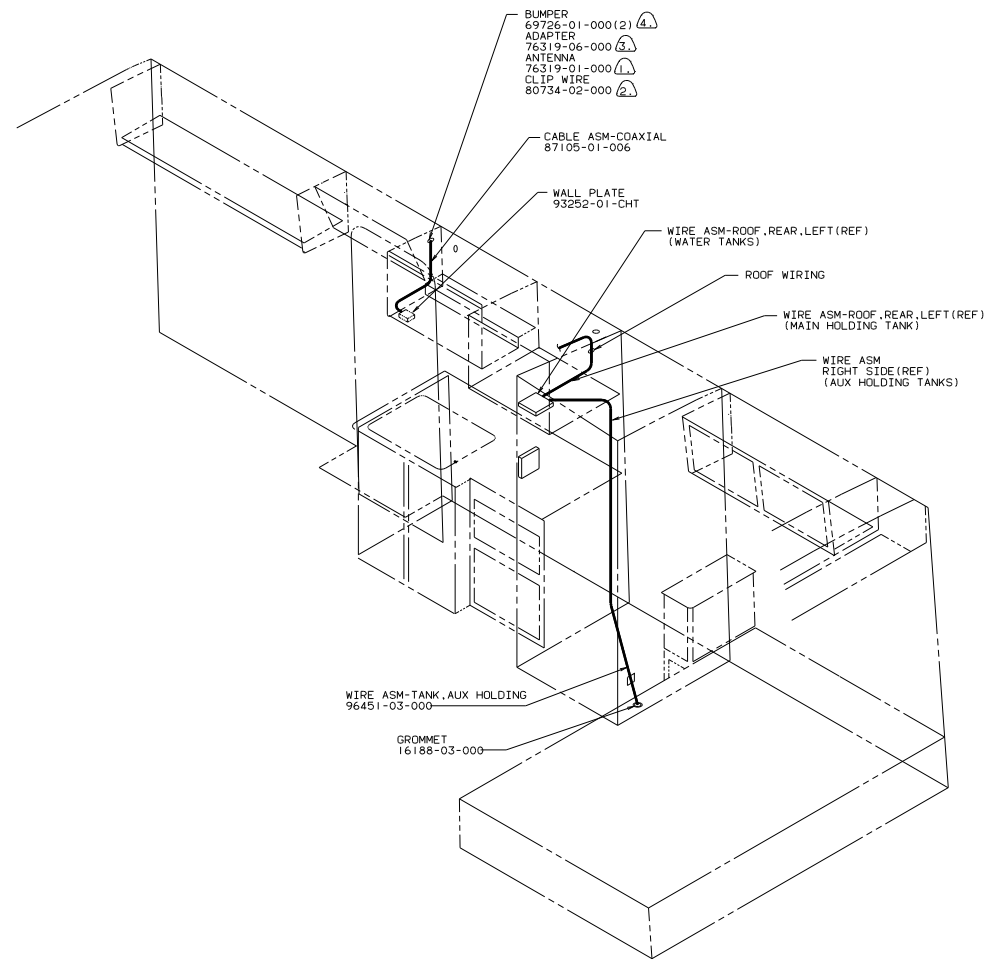
RIGHT SIDE
12V (US/CAN)

TITLE: WIRING INSTL-BODY	
30 NET SCALE DRAWING	FILE NO 95798
SHEET 8 OF 11	1 E



LEFT SIDE
MONITOR PANEL WIRING

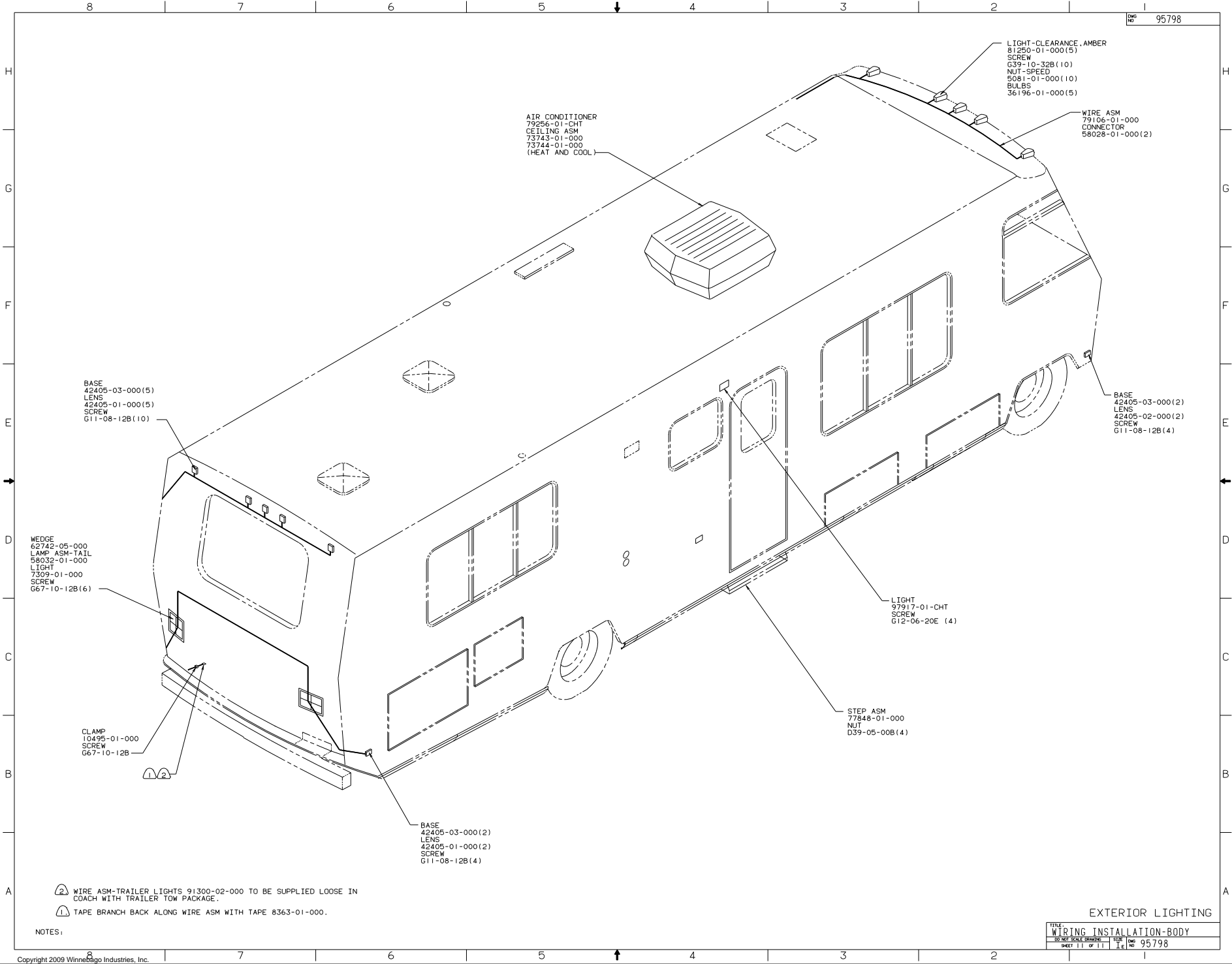
TITLE: WIRING INSTL-BODY	
30 NET SCALE DRAWING	FILE NO 95798
SHEET 9 OF 11	1 E



- NOTES:
- (4) ADD RUBBER BUMPER TO ROOF UNDER EACH END OF ANTENNA WHEN IN DOWN POSITION WHICH MAY COME IN CONTACT WITH ROOF.
 - (3) ADAPTER-COAX SUPPLIED LOOSE IN VEHICLE.
 - (2) LOCATE TO RETAIN CABLE BUT NOT RESTRICT TRAVEL OF ANTENNA.
 - (1) SEE DRAWING 76319-10-000 FOR INSTALLATION OF TELEVISION ANTENNA.

RIGHT SIDE
MONITOR PANEL WIRING/
COAXIAL CABLES

TITLE		WIRING INSTL-BODY	
30 NET SCALE DRAWING	FILE NO	1 of 1	95798
SHEET 10 OF 11	DATE		



WEDGE
62742-05-000
LAMP ASM-TAIL
58032-01-000
LIGHT
7309-01-000
SCREW
G67-10-12B(6)

BASE
42405-03-000(5)
LENS
42405-01-000(5)
SCREW
G11-08-12B(10)

CLAMP
10495-01-000
SCREW
G67-10-12B

BASE
42405-03-000(2)
LENS
42405-01-000(2)
SCREW
G11-08-12B(4)

AIR CONDITIONER
79256-01-CHT
CEILING ASM
73743-01-000
73744-01-000
(HEAT AND COOL)

LIGHT-CLEARANCE, AMBER
81250-01-000(5)
SCREW
G39-10-32B(10)
NUT-SPEED
5081-01-000(10)
BULBS
36196-01-000(5)

WIRE ASM
79106-01-000
CONNECTOR
58028-01-000(2)

BASE
42405-03-000(2)
LENS
42405-02-000(2)
SCREW
G11-08-12B(4)

LIGHT
97917-01-CHT
SCREW
G12-06-20E (4)

STEP ASM
77848-01-000
NUT
D39-05-00B(4)

- NOTES:
- ② WIRE ASM-TRAILER LIGHTS 91300-02-000 TO BE SUPPLIED LOOSE IN COACH WITH TRAILER TOW PACKAGE.
 - ① TAPE BRANCH BACK ALONG WIRE ASM WITH TAPE 8363-01-000.

EXTERIOR LIGHTING

TITLE		WIRING INSTALLATION-BODY	
30	NO. SCALE	DRW	NO. 95798
SHEET	11	OF	11