

DWG NO.	WIRE ASM
94815-01	94730-01-000
94815-02	96034-02-000

TO COACH BATTERY

NEGATIVE BAR (ON CHASSIS RAIL)
 BOLT C12-04-10B (2)
 NUT D39-05-00B (2)
 NUT D34-04-00B (2)

BATTERY 63739-01-000
 TIE-DOWN 65450-06-000
 BOLT 51387-06-000 (2)
 NUT D39-05-00B (2)
 NUT 44364-02-000 (2)

BOOT 77479-01-000 (2)

CABLE ASM 73328-49-000

CABLE ASM 73328-84-000 (2)

BATTERY (WHEN REQUIRED) 63739-01-000
 TIE-DOWN 65450-06-000
 BOLT 51387-06-000 (2)
 NUT D39-05-00B (2)
 NUT 44364-02-000 (2)

WIRE ASM CHASSIS (REF)

BOOT 77479-02-000 (2)

WIRE ASM CHASSIS

DETAIL A SCALE: 0.2

DETAIL M SCALE: 0.6

TO LP TANK JT

WIRE ASM-RIGHT SIDE

TO DASH WIRING

STARTER

CHEVROLET WIRING CONNECT TO BACKWALL WIRE ASM

CABLE ASM 73328-48-000

GENERATOR CABLE ASM 73328-85-000

REFRIGERATOR 10 BLK 10 GRN

CLAMP 10497-06-000 (2)
 SCREW G11-10-24B (2)

WIRE ASM-CONTROL CENTER

NEGATIVE BAR (ON OUTRIGGER) & GRN
 BOLT C12-04-10B
 NUT D34-04-00B

GENERATOR CONTROL WIRING

CONTROL CENTER

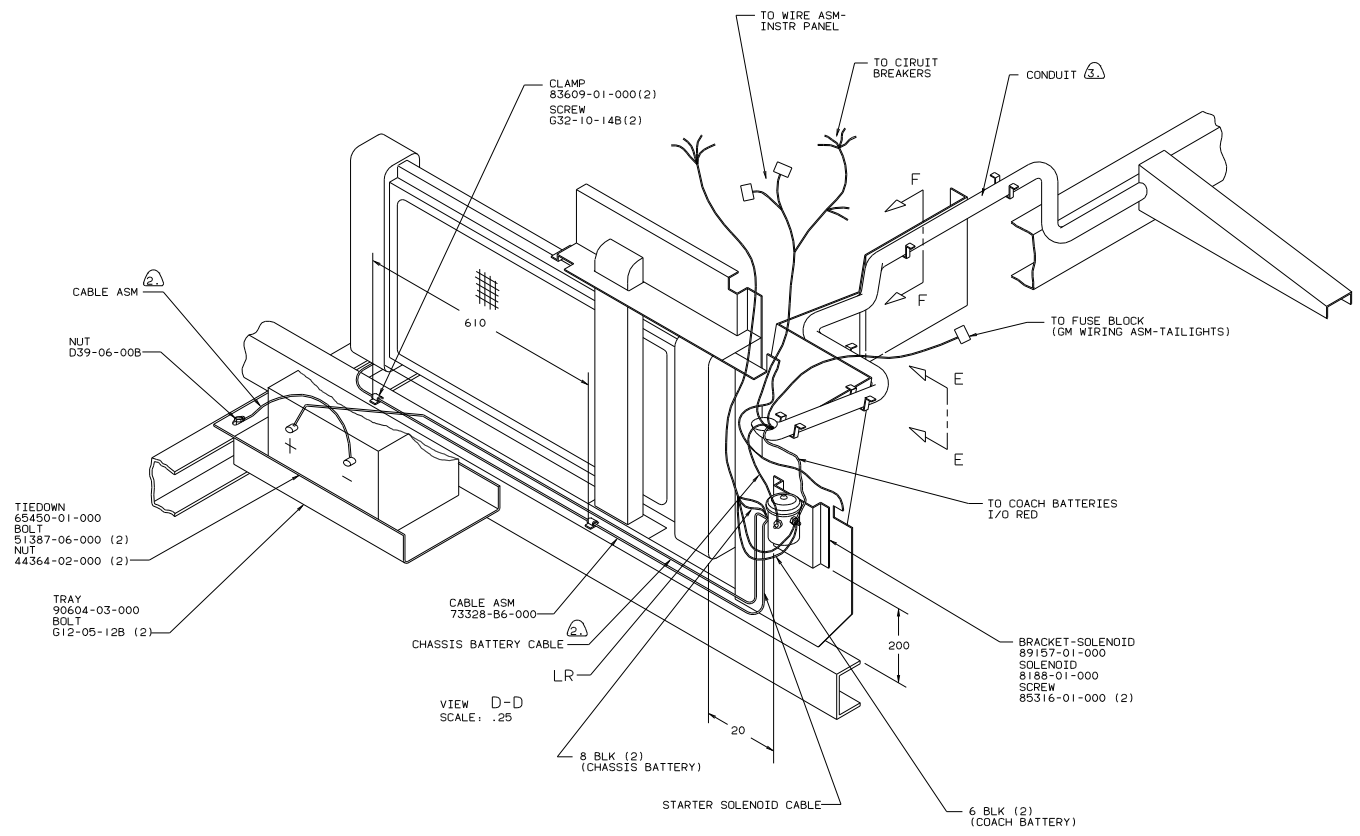
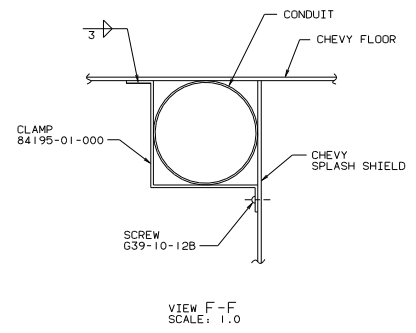
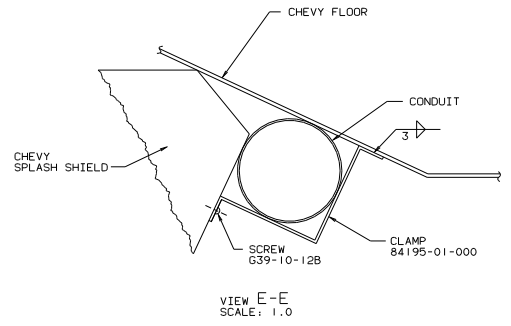
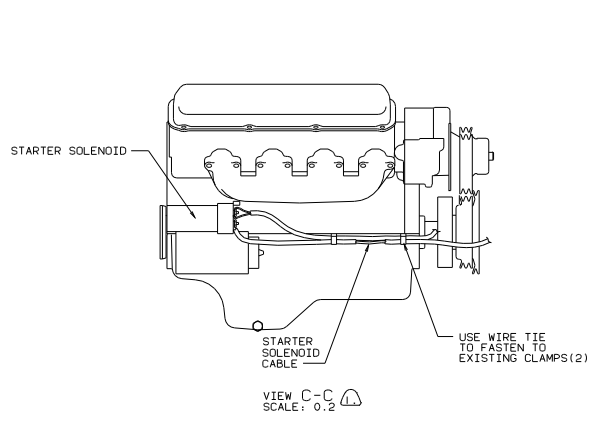
11. RLC 1990. SEE SHEET 4.
- ① BRANCH NOT USED ON ITASCA FROM HERE TO END OF BRANCH.
- ② SUPPLIED WITH CHASSIS.
- ⑧ INCLUDE GM BRAKE LIGHT, WIRE HARNESS WITH WIRE ASM CHASSIS FROM HERE TO FRONT.
- ⑦ COVER WITH CONDUIT 41953-10-000 & 41953-11-000 AS REQUIRED.
- ⑥ CLAMP 10497-06-000 (2), SCREW G11-10-24B (10).
- ⑤ CLAMP 10497-03-000 (2), SCREW G11-10-24B (2).
- ④ CLAMP 83609-01-000 (2), BOLT G18-10-12B (2), NUT D24-10-00B (2).
- ③ CLAMP 83610-01-000 (4), SCREW G11-10-24B (4).
2. SECURE CONDUIT 41953-01-000, 41953-02-000 AND 41953-03-000 OVER ALL WIRES IN CONTACT WITH SHARP EDGES.
1. LEGEND: — WINNEBAGO WIRING, - - - CABLE, - - - GM WIRING.

WINNEBAGO '89 W/ICF27EU

DATE	UNSPECIFIED TOLERANCES ARE:	MATERIAL
CHKD	ANGLE DIM (IN)	1/8
DATE	ONE-PLACE (IN.XI)	
DATE	TWO-PLACE (IN.XXX)	
DATE	THREE-PLACE (IN.XXXX)	
DATE	THREE-ANGLE PROJECTION	

LANE NO. 2 TITLE: WIRING INSTL-CHASSIS REF: 89130

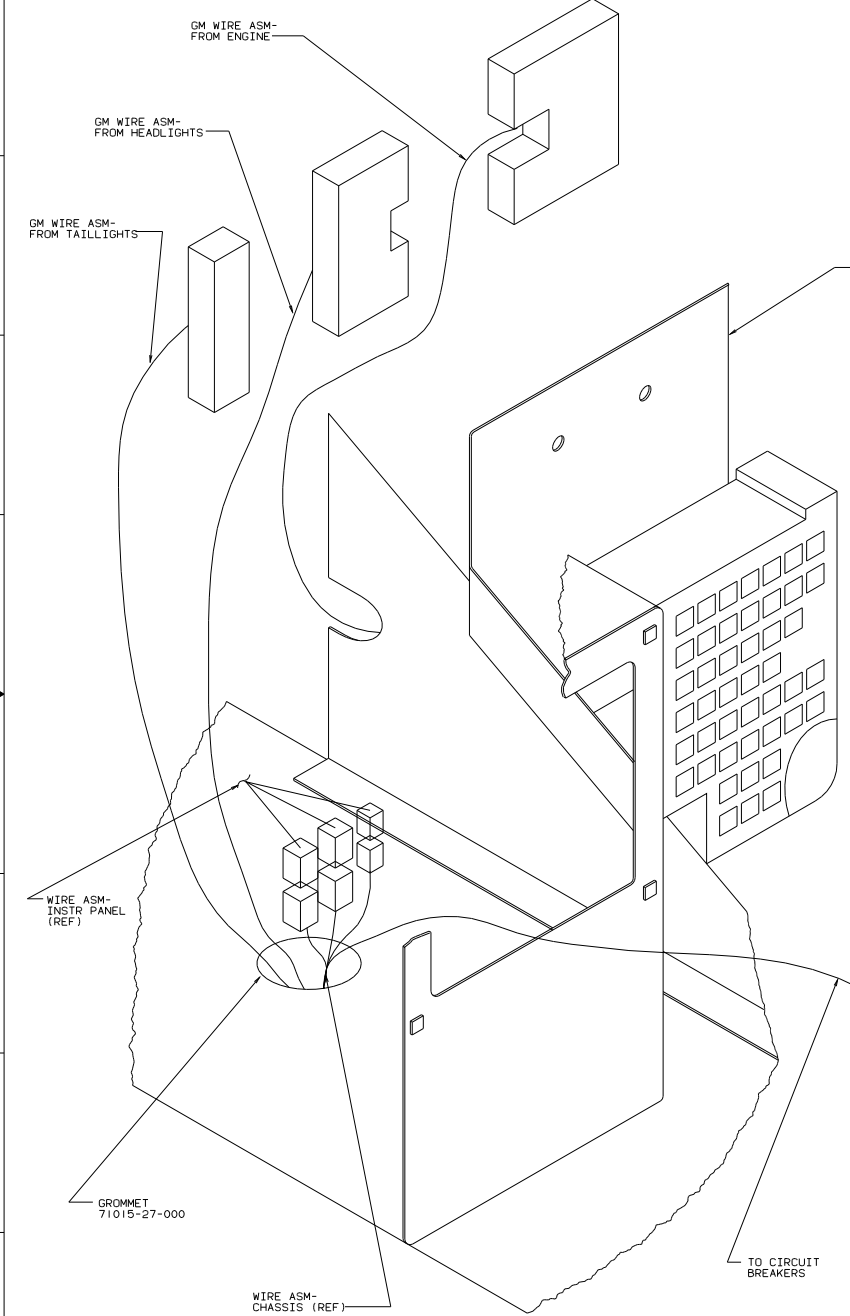
1/4" = 1" SCALE: 0.1 30 NET SCALE DRAWING SHEET 1 OF 4 94815



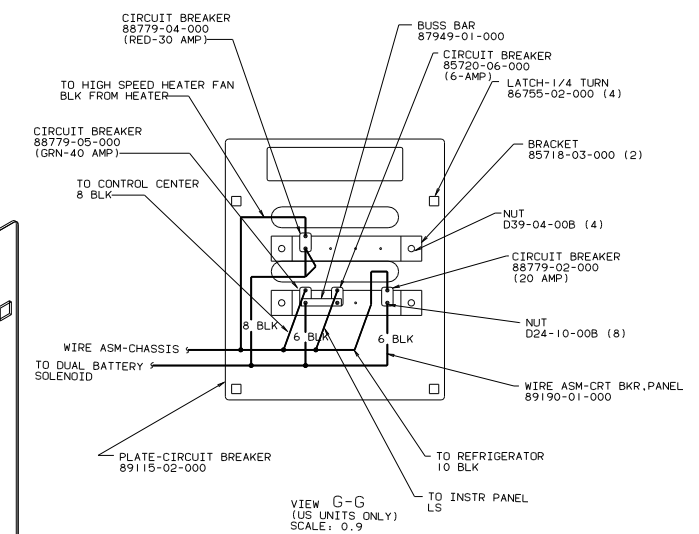
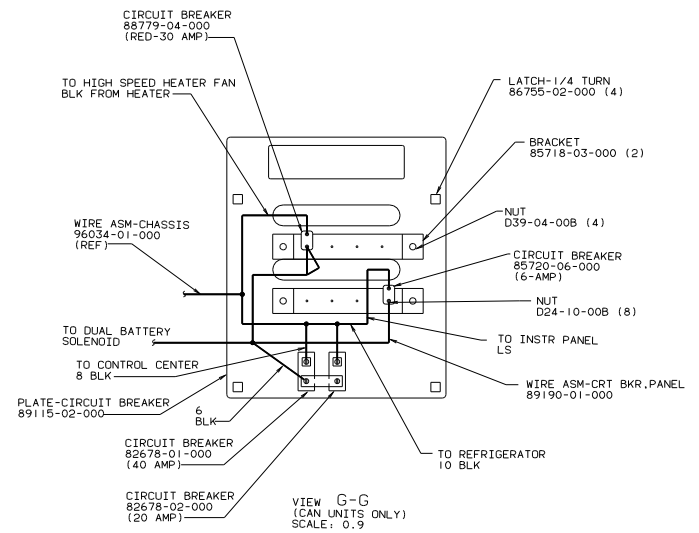
- ③ COVER WITH CONDUIT-41953-10-000 & 41953-11-000 AS REQUIRED.
- ② SUPPLIED WITH CHASSIS.
- ① BATTERY CABLE MUST BE INSTALLED TO STARTER MOTOR BEFORE ENGINE WIRING HARNESS AND ROUTED IN SUCH A MANNER AS TO PREVENT ANY POSSIBLE DEGRADATION FROM THE EXHAUST SYSTEM.

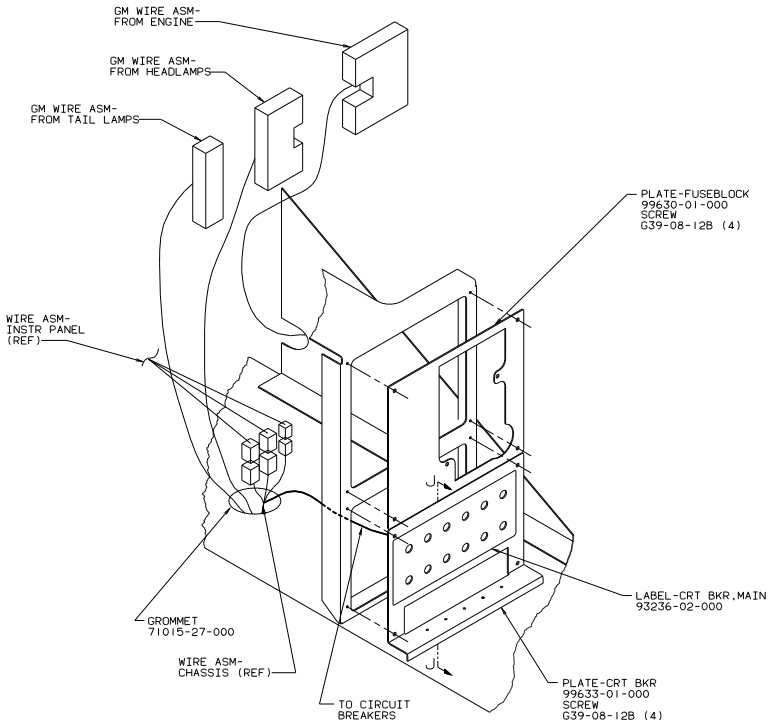
NOTES:

TITLE: WIRING INSTL-CHASSIS			
30 NET SCALE Drawing	FILE	Doc	94815
SHEET 2 of 4	1	1	

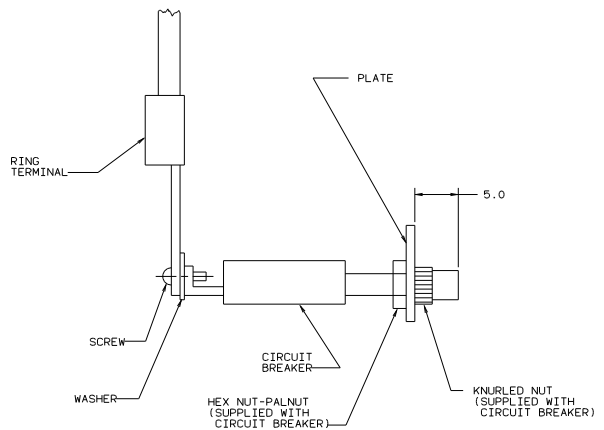


VIEW B-B
SCALE: NONE

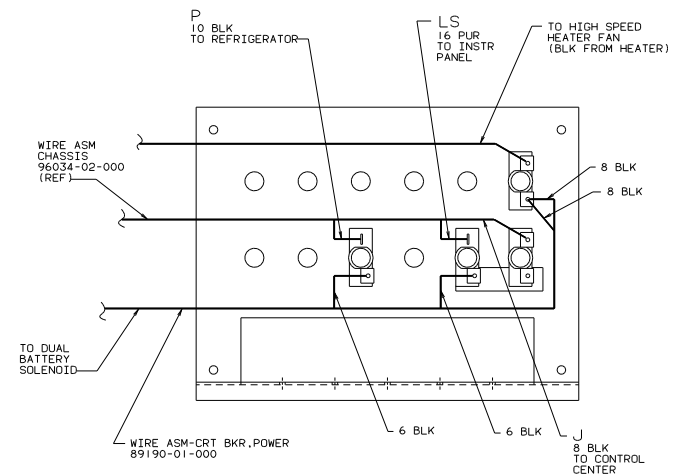




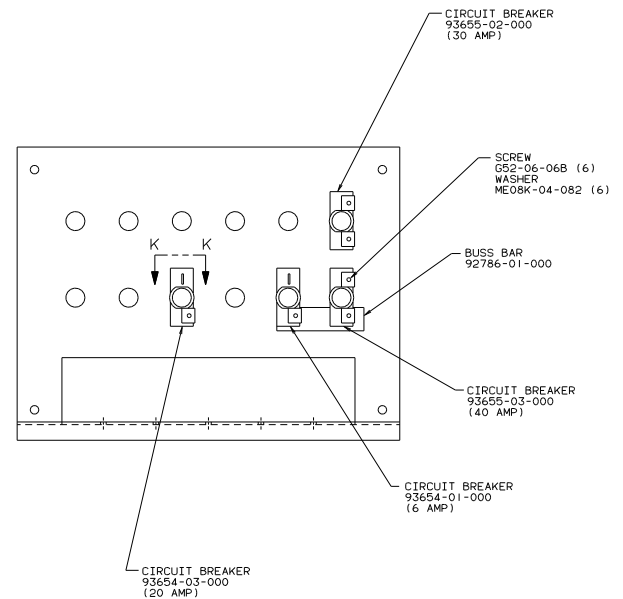
VIEW H-H



VIEW K-K



VIEW J-J



VIEW J-J

1990 RLC

TITLE: WIRING INSTL-CHASSIS	
30 NET SCALE DRAWING	REV 1 E
SHEET 4 OF 4	DWG NO 94815