

9. MAKE CONNECTION AS SHOWN AFTER INSTALLATION OF BOTH WIRE ASSEMBLIES.
8. USE WITH MOTOR AID HEATER ONLY.
7. USED ONLY IF TRAY IS NOT CHASSIS SUPPLIED.
6. USE WITH FIBERGLASS TRANSITION PANEL ONLY.
5. SEE DRAWING 83833 NOTE 6 FOR LOCATION OF WIRE ASM.
4. USE WIRE TIES 8343-01 AND WIRE CLAMPS 10497-01-000 APPROXIMATELY 600 MM ON CENTER UNLESS OTHERWISE SPECIFIED.
3. USE EXISTING HOLES IN WHEEL WELL FOR MOUNTING TRAY AND SUPPORT ASSEMBLY.
2. SECURE CONDUIT 41953-01-000 OVER ALL WIRE IN CONTACT WITH SHARP EDGES.
1. LEGEND: — — — — FORD WIRING — — — — WINNEBAGO WIRING - - - - CABLE.

UNSPECIFIED TOLERANCES ARE:		MATERIAL	
DRY	FR	ANGLE	18.25
DRY	FR	ONE-PIECE	18.25
DRY	FR	NO-PIECE	18.25
DRY	FR	ANGLE	18.25
DRY	FR	ANGLE	18.25

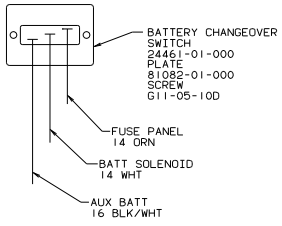
WINNEBAGO '88 W/IF426RT

INDUSTRY WIRE PRODUCTION

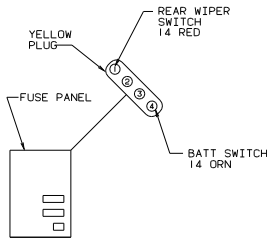
LANE LV-0598 TITLE: WIRE INSTALLATION-CHASSIS

REV 1/10 30 MET SCALE DRAWING SHEET 1 OF 2

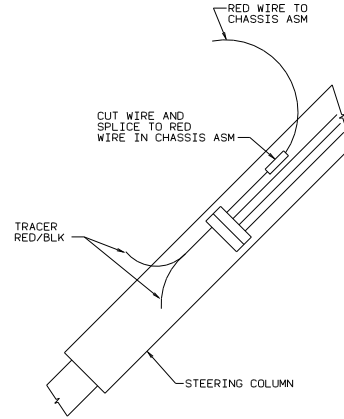
WINNCS REF: 83837 88605



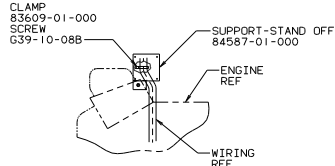
VIEW C-C



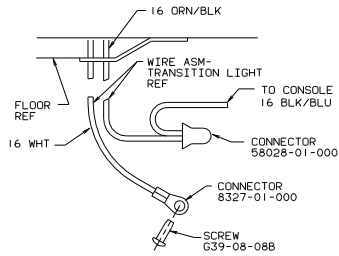
SECTION D-D



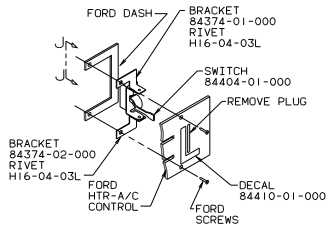
VIEW E-E
(ITASCA ONLY)



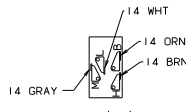
VIEW F-F
SCALE: 1/5



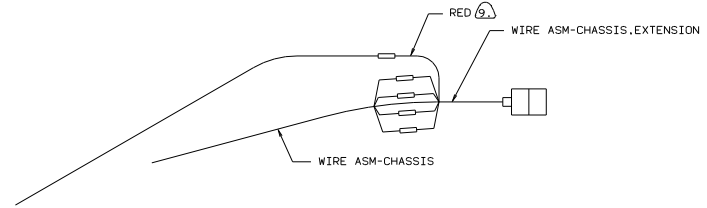
VIEW G-G (6)



VIEW H-H (8)



VIEW J-J
SCALE 2/1 (8)



DETAIL K