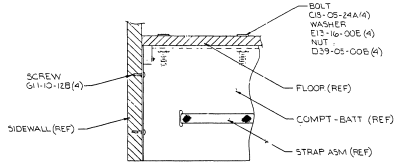
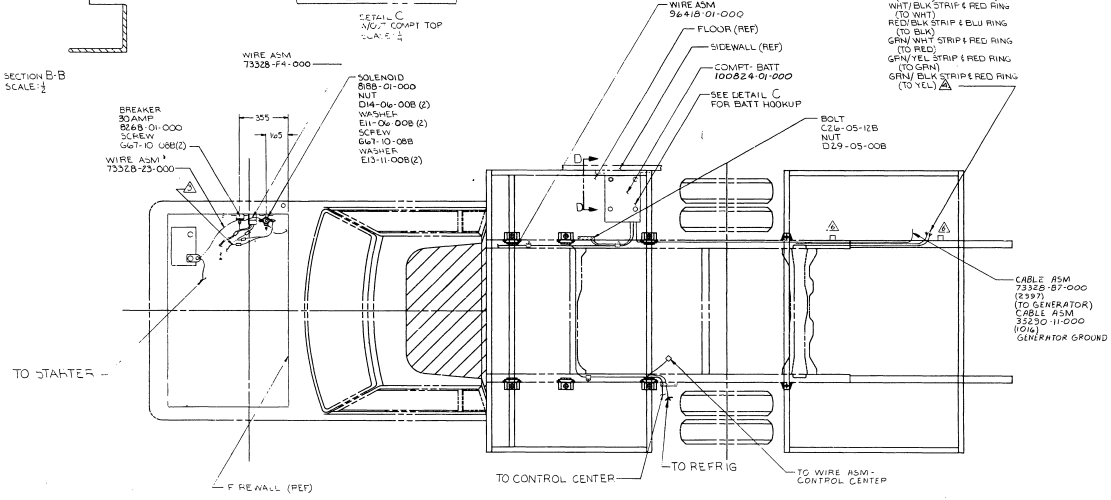


SECTION B-B
SCALE: 1/2



SECTION D-D
SCALE: 1/2
(ROTATED 90°)

- ▲ CLAMP R310-01-000 (2), SCREW G39-06-08B (2)
- ▲ CUT TO DIMENSION SHOWN.
- ▲ TAKE TOYOTA TAILLIGHT WIRES ON LEFT SIDE, BEHIND TANK AND MOVE TO RIGHT SIDE, CUT OFF ENDS TO SAME LENGTH AND SPICE TO WIRE ASM - BACKWALL.
- ▲ CUT AND SPICE TOYOTA ELU/E13-13-00A/E13-13-00B/WHT/FLY/VELO/7/8 CH... WIRE WITH WHT WIRE.
- ▲ USE WIRE TIES 1243-01-000 AND CLAMPS 10497-01-000 APPROX 60MM ON CENTER.
- 1. SECURE CONDUIT 41953-01-000 OVER ALL WIRES IN CONTACT WITH SHARP EDGES.

WIRING		REVISIONS	
NO.	DATE	BY	REASON
1			
2			
3			
4			
5			
6			
7			
8			
9			
10			

NIRE INSTL-CHASSIS
 86 W/1319RB
 84682